

ARLINGTON, TEXAS

AL-5189 (FAA)

24305

LOC/DME I-GKY 111.55 Chan 52 (Y)	APP CRS 342°	Rwy Idg 6080 TDZE 620 Apt Elev 628
--	------------------------	---

ILS or LOC/DME RWY 34

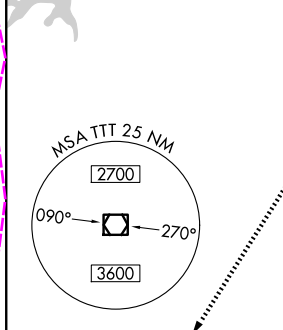
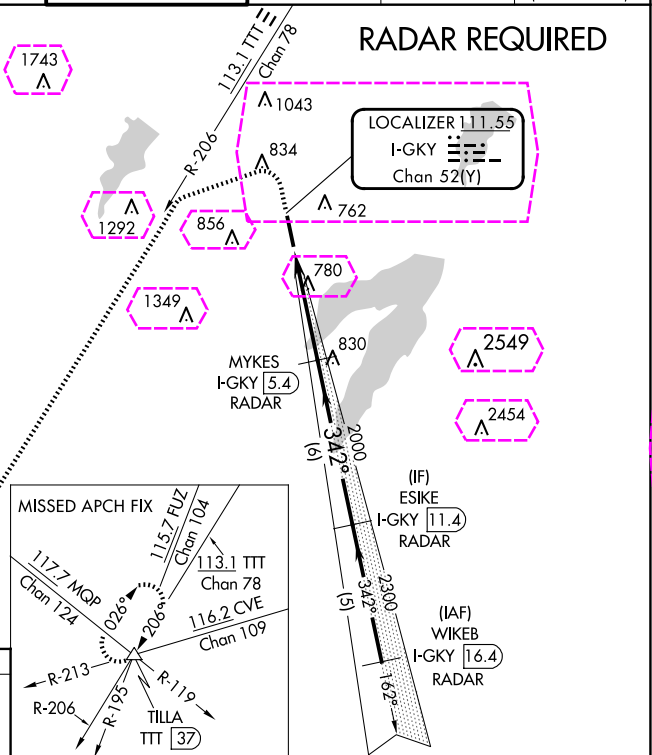
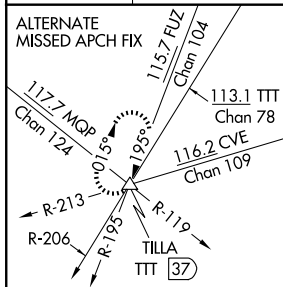
ARLINGTON MUNI (GKY)

When local altimeter setting not received, use Grand Prairie Muni altimeter setting. Inop table does not apply to S-ILS 34.
For inop MALSR increase S-LOC 34 Cat A, B visibility to 1 mile.

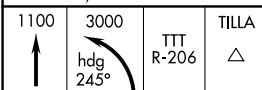
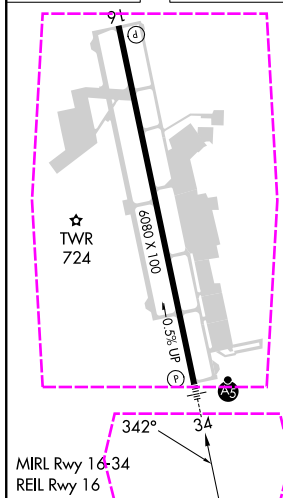


MISSED APPROACH: Climb to 1100 then climbing left turn to 3000 via heading 245° and TTT VOR/DME R-206 to TILLA INT/TTT 37 DME and hold.

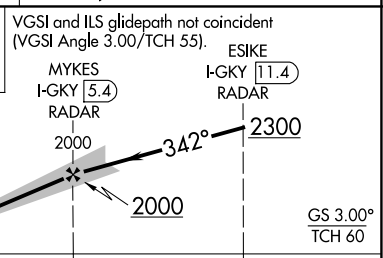
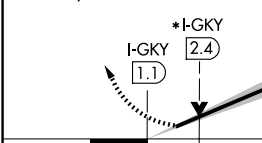
ASOS 127.375	LONE STAR APP CON 135.975 379.9	ARLINGTON TOWER ★ 128.625 (CTAF)	GND CON 121.875	CLNC DEL 121.875	CLNC DEL 118.85 (When twr closed)
------------------------	---	--	---------------------------	----------------------------	--



ELEV 628	TDZE 620
-----------------	-----------------



*LOC only.



CATEGORY	A	B	C	D
S-ILS 34	820- ³ / ₄	200 (200- ³ / ₄)		NA
S-LOC 34	1060- ³ / ₄	440 (500- ³ / ₄)		NA
CIRCLING	1100-1 472 (500-1)	1140-1 512 (600-1)	1220-1 ¹ / ₂ 592 (600-1 ¹ / ₂)	NA

ARLINGTON, TEXAS
Amdt 2D 15JUL21

32°40'N-97°06'W

ILS or LOC/DME RWY 34

SC-2, 10 JUL 2025 to 07 AUG 2025

SC-2, 10 JUL 2025 to 07 AUG 2025

ARLINGTON, TEXAS

AL-5189 (FAA)

25219

LOC/DME I-GKY 111.55 Chan 52 (Y)	APP CRS 342°	Rwy Ldg TDZE 620 Apt Elev 628
--	------------------------	---

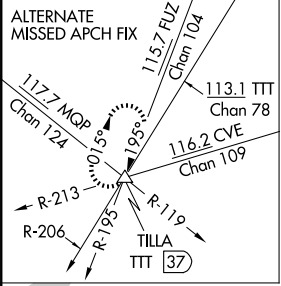
ILS or LOC/DME RWY 34

ARLINGTON MUNI (GKY)

When local altimeter setting not received, use Grand Prairie Muni altimeter setting. Inop table does not apply to S-ILS 34.
For inop MALSR increase S-LOC 34 Cat A, B visibility to 1 mile.

MALSR
MISSED APPROACH: Climb to 1100 then climbing left turn to 3000 via heading 245° and TTT VOR/DME R-206 to TILLA INT/TTT 37 DME and hold.

ASOS 127.375	LONE STAR APP CON 135.975 379.9	ARLINGTON TOWER ★ 128.625 (CTAF) 0	GND CON 121.875	CLNC DEL 121.875	CLNC DEL 118.85 (When twr closed)
------------------------	---	--	---------------------------	----------------------------	--



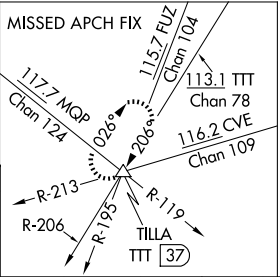
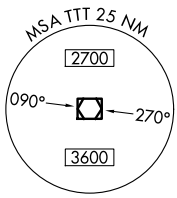
RADAR REQUIRED

LOCALIZER 111.55
I-GKY
Chan 52(Y)

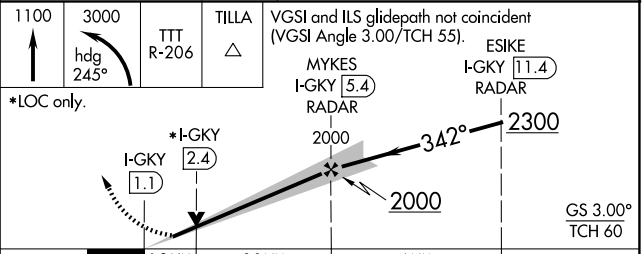
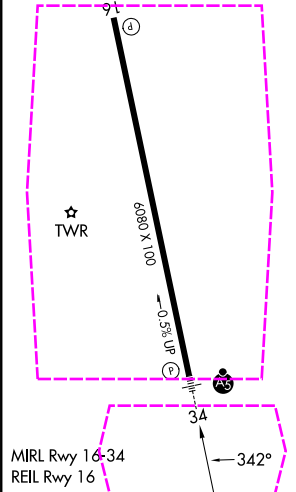
MYKES
I-GKY [5.4]
RADAR

(IF)
ESIKE
I-GKY [11.4]
RADAR

(IAF)
WIKEB
I-GKY [16.4]
RADAR



ELEV 628	TDZE 620
----------	----------



CATEGORY	A	B	C	D
S-ILS 34	820-3/4	200 (200-3/4)		NA
S-LOC 34	1060-3/4	440 (500-3/4)		NA
CIRCLING	1100-1 472 (500-1)	1140-1 512 (600-1)	1220-1 1/2 592 (600-1 1/2)	NA

ARLINGTON, TEXAS
Amdt 2D 15JUL21

32°40'N-97°06'W

ARLINGTON MUNI (GKY)
ILS or LOC/DME RWY 34

SC-2, 07 AUG 2025 to 04 SEP 2025

SC-2, 07 AUG 2025 to 04 SEP 2025