



BRainerd, Minnesota

AL-5182 (FAA)

25219

WAAS CH <b>70711</b> <b>W34A</b>	APP CRS <b>340°</b>	Rwy Ldg TDZE <b>1232</b> Apt Elev <b>1232</b>
--	------------------------	---

# RNAV (GPS) RWY 34

BRainerd Lakes RGNL (BRD)

RNP APCH - GPS.

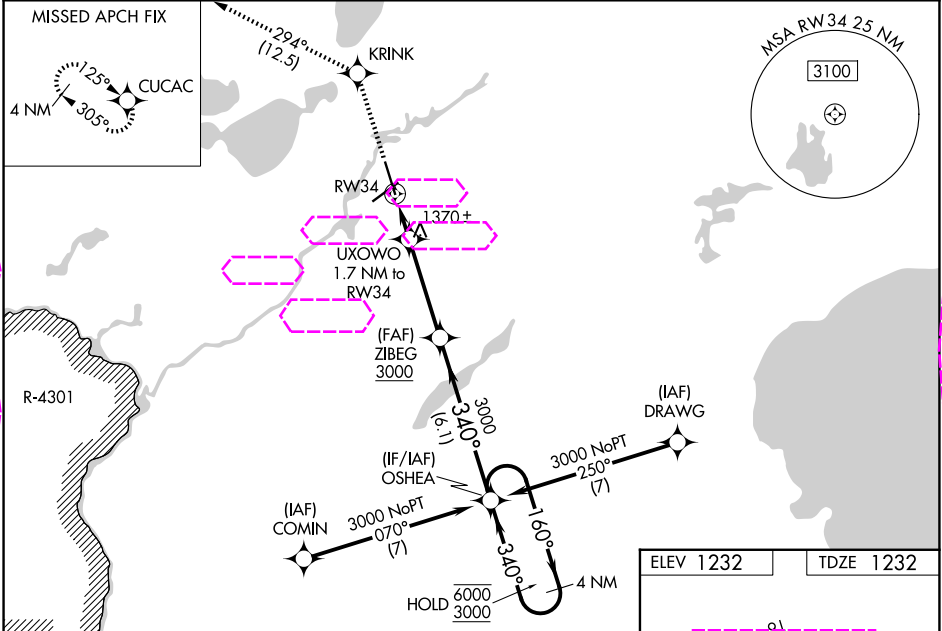
⚠ For uncompensated Baro-VNAV systems, LNAV/VNAV NA below -21°C or above 54°C. Baro-VNAV and VDP NA when using AIT altimeter setting. When local altimeter setting not received, use AIT altimeter setting and increase LPV DA to 1484 feet; increase LNAV/VNAV DA to 1578 feet and all visibilities ½ SM. Increase all MDAs 60 feet and LNAV visibility Cat C/D ¼ SM. For inop ALS when using AIT altimeter setting, increase LNAV/VNAV all Cats visibility to 1 SM. For inop ALS increase LNAV/VNAV all Cats visibility to ¾ SM.

MALSR

AS

MISSED APPROACH: Climb to 3300 direct KRINK and on 294° track to CUCAC and hold.

ASOS <b>126.775</b>	MINNEAPOLIS CENTER <b>118.05 239.0</b>	UNICOM <b>122.7 (CTAF)</b>
------------------------	---	-------------------------------



3300

↑

KRINK

✧

tr  
294°

✧

CUCAC

✧

UXOWO

1.7 NM to  
RW34

1.1 NM to  
RW34

1.1 NM

0.6 NM

3.7 NM

6.1 NM

RW34

1820

ZIBEG

3000

OSHEA

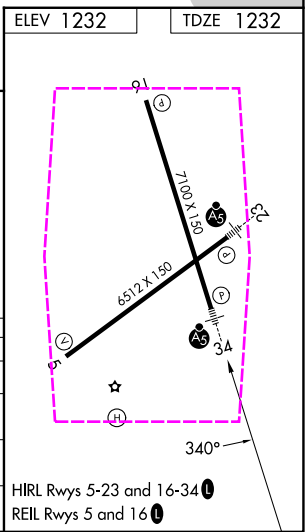
4 NM  
Holding Pattern

160° → 6000

← 340° 3000

GP 3.00°  
TCH 47

CATEGORY	A		B		C		D	
LPV DA			1432-½		200 (200-½)			
LNAV/VNAV DA			1526-½		294 (300-½)			
LNAV MDA	1620-½		388 (400-½)		1620-⅝		388 (400-⅝)	
CIRCLING	1760-1		528 (600-1)		1760-1½ 528 (600-1½)		1840-2 608 (700-2)	



BRainerd, Minnesota  
Amdt 1 26DEC24

46°24'N-94°08'W

# BRainerd Lakes RGNL (BRD)

## RNAV (GPS) RWY 34

NC-1, 07 AUG 2025 to 04 SEP 2025

NC-1, 07 AUG 2025 to 04 SEP 2025