

BRAINERD, MINNESOTA

AL-5182 (FAA)

25107

WAAS CH <b>82502</b> <b>W23A</b>	APP CRS <b>231°</b>	Rwy Idg <b>6512</b> TDZE <b>1224</b> Apt Elev <b>1232</b>
--	------------------------	---


# RNAV (GPS) RWY 23

BRAINERD LAKES RGNL (BRD)

RNP APCH - GPS.

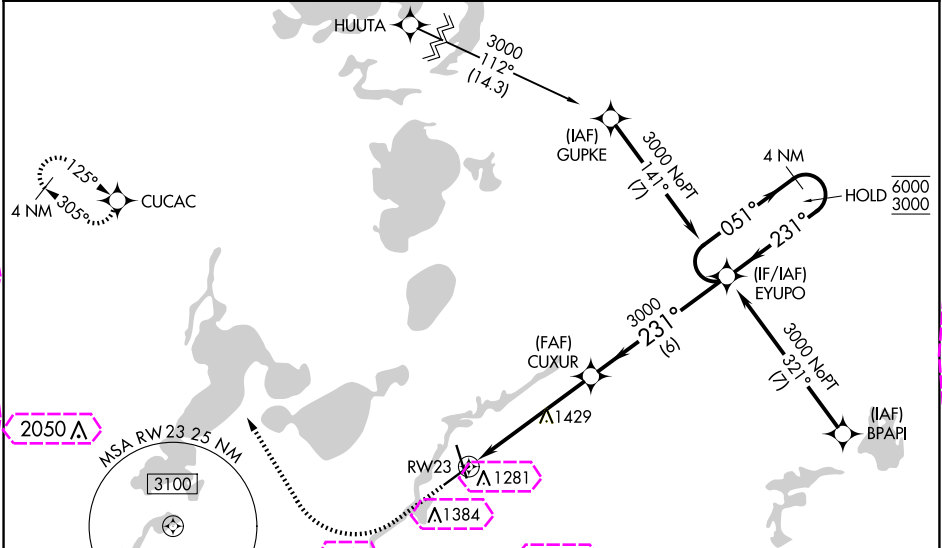
**⚠** For uncompensated Baro-VNAV systems, LNAV/VNAV NA below -21°C or above 54°C. Baro-VNAV and VDP NA when using AIT altimeter setting. When local altimeter setting not received, use AIT altimeter setting and increase LPV DA to 1476 feet; increase LNAV/VNAV DA to 1553 feet; increase all MDAs 60 feet and LNAV visibility Cat C/D ½ SM, and Circling visibility Cat C/D ¼ SM. For inop ALS when using AIT altimeter setting, increase LNAV/VNAV Cats C/D visibility to 1 ½ SM. For inop ALS, increase LNAV/VNAV all Cats visibility ¾ SM.





**MALSR**

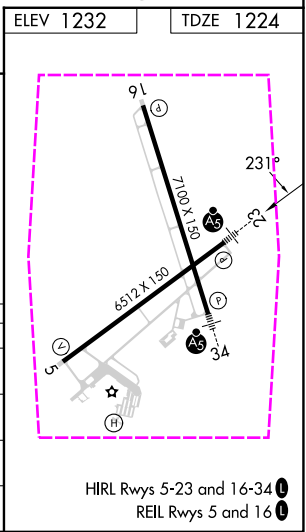


**MISSED APPROACH:** Climb to 1800 then climbing right turn to 3300 direct CUCAV and hold.

ASOS <b>126.775</b>	MINNEAPOLIS CENTER <b>118.05 239.0</b>	UNICOM <b>122.7 (CTAF) 0</b>
------------------------	---	---------------------------------



 		CUXUR		EYUPO	
 		3000		4 NM Holding Pattern	
RW23		1.3 NM to RW23		051° → 6000 ← 231° 3000	
1.3 NM		4.1 NM		GP 3.00° TCH 50	
CATEGORY	A	B	C	D	
LPV DA		1424-½ 200 (200-½)			
LNAV/VNAV DA		1501-½ 277 (300-½)			
LNAV MDA	1680-½ 456 (500-½)		1680-¾ 456 (500-¾)		
<b>CIRCLING</b>	1700-1 468 (500-1)		1780-1½ 548 (600-1½)	1860-2 628 (700-2)	



BRAINERD, MINNESOTA  
Amdt 1 17APR25

46°24'N-94°08'W

# BRAINERD LAKES RGNL (BRD)

## RNAV (GPS) RWY 23

BRainerd, Minnesota

AL-5182 (FAA)

25219

WAAS CH <b>82502</b> <b>W23A</b>	APP CRS <b>231°</b>	Rwy Ldg <b>6512</b> TDZE <b>1224</b> Apt Elev <b>1232</b>
--	------------------------	---


# RNAV (GPS) RWY 23

BRainerd Lakes RGNL (BRD)

RNP APCH - GPS.

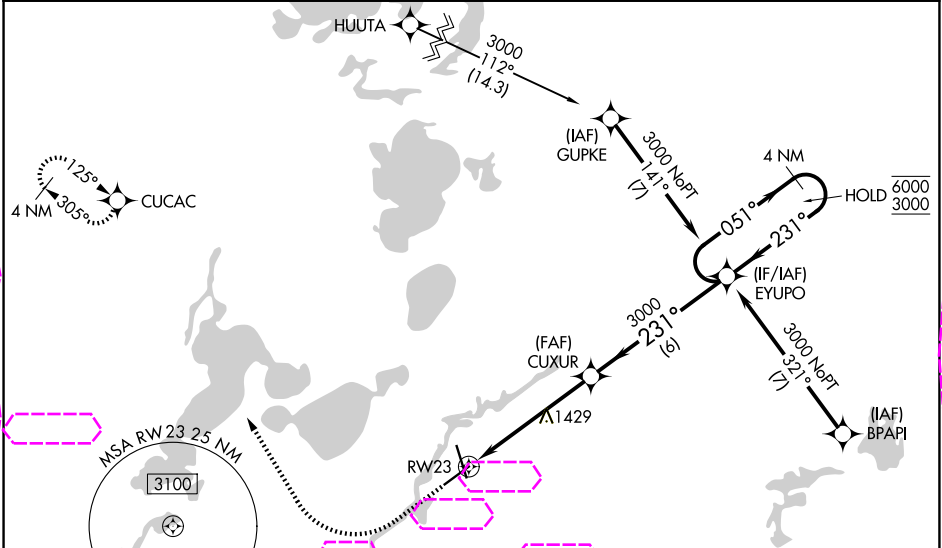
**⚠** For uncompensated Baro-VNAV systems, LNAV/VNAV NA below -21°C or above 54°C. Baro-VNAV and VDP NA when using AIT altimeter setting. When local altimeter setting not received, use AIT altimeter setting and increase LPV DA to 1476 feet; increase LNAV/VNAV DA to 1553 feet; increase all MDAs 60 feet and LNAV visibility Cat C/D 1/8 SM, and Circling visibility Cat C/D 1/4 SM. For inop ALS when using AIT altimeter setting, increase LNAV/VNAV Cats C/D visibility to 1 1/8 SM. For inop ALS, increase LNAV/VNAV all Cats visibility 7/8 SM.


**MALSR**



**MISSED APPROACH:** Climb to 1800 then climbing right turn to 3300 direct CUCAV and hold.

ASOS <b>126.775</b>	MINNEAPOLIS CENTER <b>118.05 239.0</b>	UNICOM <b>122.7 (CTAF) 0</b>
------------------------	---	---------------------------------



1800 3300 CUCAC		CUXUR		EYUPO	
		3000		4 NM Holding Pattern	
1.3 NM to RW23		231°		051° 6000 3000	
RW23		3000		GP 3.00° TCH 50	
1.3 NM		4.1 NM		6 NM	
CATEGORY		A	B	C	D
LPV DA		1424-1/2		200 (200-1/2)	
LNAV/VNAV DA		1501-1/2		277 (300-1/2)	
LNAV MDA		1680-1/2 456 (500-1/2)		1680-7/8 456 (500-7/8)	
CIRCLING		1700-1 468 (500-1)		1780-1 1/2 548 (600-1 1/2) 1860-2 628 (700-2)	

