

BRAINERD, MINNESOTA

AL-5182 (FAA)

25107

LOC/DME I- LER 109.7 Chan 34	APP CRS 340°	Rwy Idg TDZE Apt Elev	7100 1232 1232
---	------------------------	-----------------------------	---

ILS or LOC/DME RWY 34
BRAINERD LAKES RGNL (BRD)

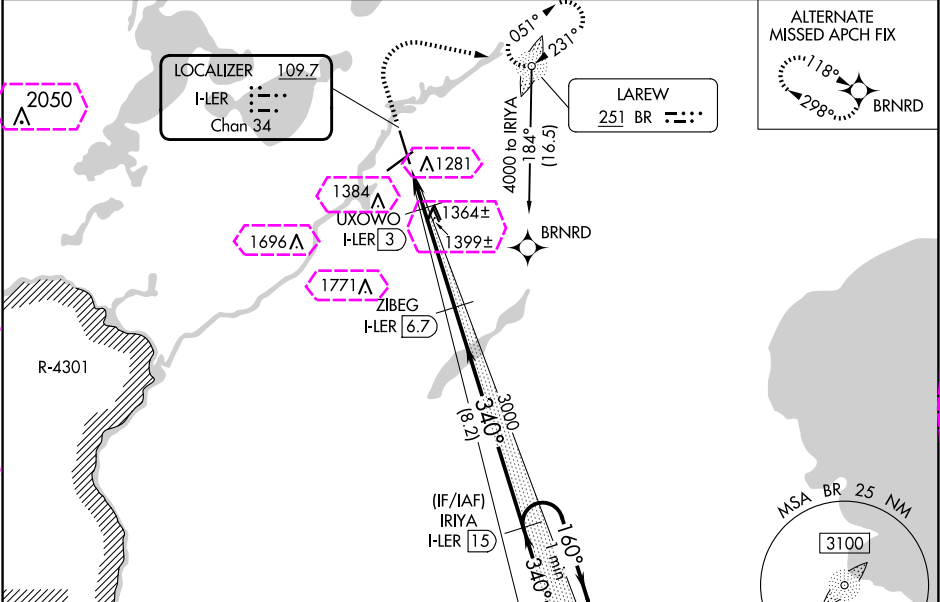
RNP APCH-GPS, from GOLLF.
DME required. ADF required.

VDP NA with Aitkin altimeter setting. When local altimeter setting not received, use Aitkin altimeter setting: increase all DA to 1484; increase all MDAs 60 feet and visibility S-LOC 34 Cat C/D ¼ SM and visibility Circling Cat D ¼ SM.

MALSR

MISSED APPROACH: Climb to 1700 then climbing right turn to 4000 direct BR LOM, continue climb-in-hold to 4000.

ASOS 126.775	MINNEAPOLIS CENTER 118.05 239.0	UNICOM 122.7(CTAF) 0
------------------------	---	--------------------------------



ELEV 1232 TDZE 1232

HIRL Rwy 5-23 and 16-34
REIL Rwy 5 and 16

1700	4000	BR	ZIBEG I- LER 6.7	IRIYA I- LER 15	One Minute Holding Pattern
*LOC only	*I- LER 1.3	*I- LER 2.4	UXOWO I- LER 3	3000	160° → 340° → 4000
	1.1 NM	0.6	3.7 NM	8.2 NM	GS 3.00° TCH 46
CATEGORY	A	B	C	D	
S-ILS 34	1432-½	200 (200-½)			
S-LOC 34	1620-½	388 (400-½)	1620-⅝	388 (400-⅝)	
CIRCLING	1760-1	528 (600-1)	1760-1½ 528 (600-1½)	1860-2 628 (700-2)	

BRAINERD, MINNESOTA
Amdt 2B 14JUL22

46°24'N-94°08'W

BRAINERD LAKES RGNL (BRD)
ILS or LOC/DME RWY 34

BRAINERD, MINNESOTA

AL-5182 (FAA)

25219

LOC/DME I- LER 109.7 Chan 34	APP CRS 340°	Rwy Ldg TDZE Apt Elev	7100 1232 1232
---	------------------------	-----------------------------	---

ILS or LOC/DME RWY 34

BRAINERD LAKES RGNL (BRD)

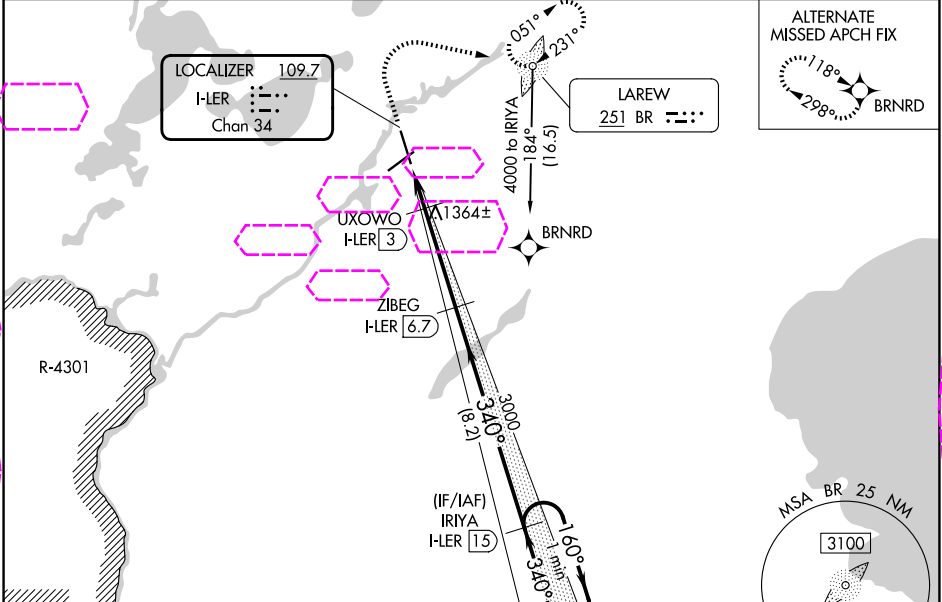
RNP APCH-GPS, from GOLLF.
DME required. ADF required.

VDP NA with Aitkin altimeter setting. When local altimeter setting not received, use Aitkin altimeter setting: increase all DA to 1484; increase all MDAs 60 feet and visibility S-LOC 34 Cat C/D ¼ SM and visibility Circling Cat D ¼ SM.

MALS

MISSED APPROACH: Climb to 1700 then climbing right turn to 4000 direct BR LOM, continue climb-in-hold to 4000.

ASOS 126.775	MINNEAPOLIS CENTER 118.05 239.0	UNICOM 122.7(CTAF) 0
------------------------	---	--------------------------------



ELEV 1232 TDZE 1232

HIRL Rwy 5-23 and 16-34
REIL Rwy 5 and 16

1700	4000	BR	ZIBEG I-ILS (6.7)	IRIYA I-ILS (15)	One Minute Holding Pattern
*LOC only	*H-ILS (1.3)	UXOWO I-ILS (3)	3000	340°	4000
	1.1 NM	0.6	3.7 NM	8.2 NM	GS 3.00° TCH 46
CATEGORY	A	B	C	D	
S-ILS 34	1432-½	200 (200-½)			
S-LOC 34	1620-½	388 (400-½)	1620-⅝	388 (400-⅝)	
CIRCLING	1760-1	528 (600-1)	1760-1½	1860-2	
			528 (600-1½)	628 (700-2)	

BRAINERD, MINNESOTA
Amdt 2B 14JUL22

46°24'N-94°08'W

ILS or LOC/DME RWY 34

NC-1, 07 AUG 2025 to 04 SEP 2025

NC-1, 07 AUG 2025 to 04 SEP 2025