



BRAINERD, MINNESOTA

AL-5182 (FAA)

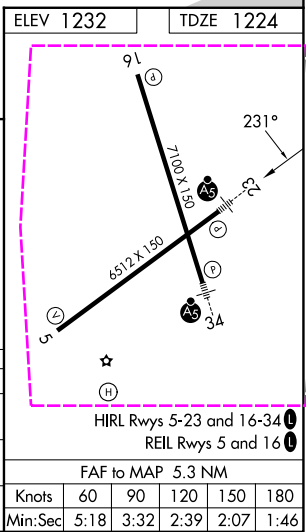
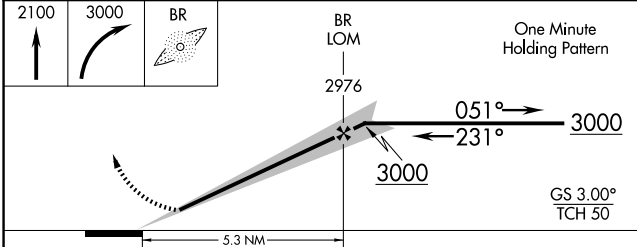
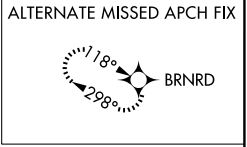
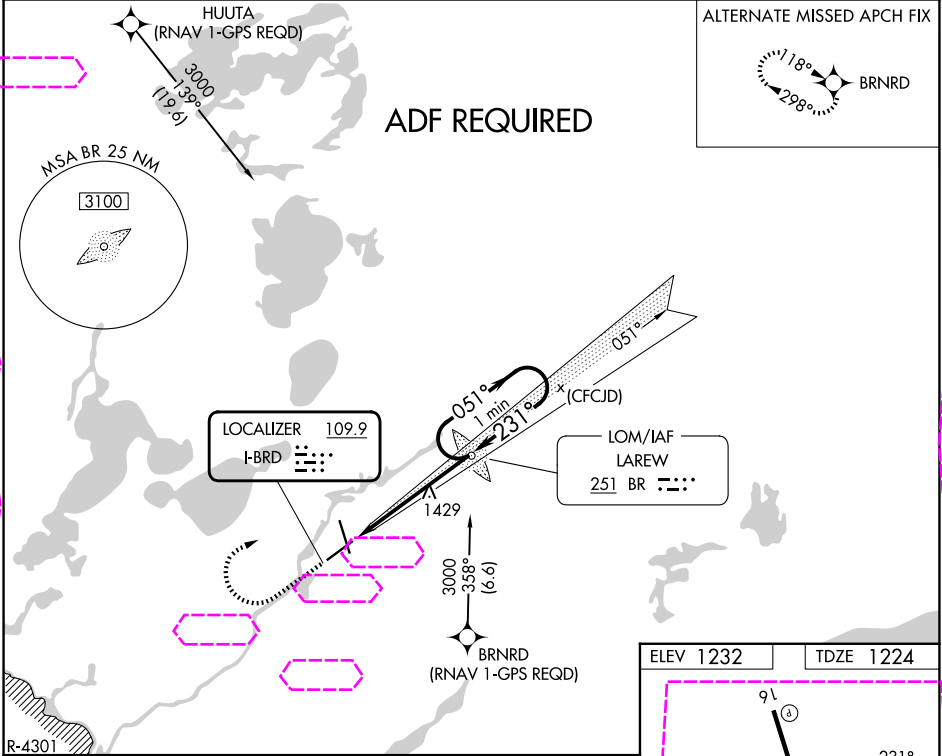
25219

LOC I-BRD <b>109.9</b>	APP CRS <b>231°</b>	Rwy Ldg TDZE Apt Elev <b>6512</b> <b>1224</b> <b>1232</b>
---------------------------	------------------------	--

ILS or LOC RWY 23  
BRAINERD LAKES RGNL (BRD)

<b>ADF REQUIRED.</b> When local altimeter setting not received, use Aitkin altimeter setting and increase all DAs 52 feet and all MDAs 60 feet. Increase S-LOC Cat C visibility to 1 SM and Circling Cat D visibility to 2¼ SM.	MALSRL 	MISSED APPROACH: Climb to 2100 then climbing right turn to 3000 direct LAREW LOM and hold.
---	------------	--

ASOS <b>126.775</b>	MINNEAPOLIS CENTER <b>118.05 239.0</b>	UNICOM <b>122.7 (CTAF)</b>
------------------------	---	-------------------------------



CATEGORY	A	B	C	D
S-ILS 23	1424-½ 200 (200-½)			
S-LOC 23	1680-½ 456 (500-½)	1680-¾ 456 (500-¾)	1680-1 456 (500-1)	
CIRCLING	1760-1 528 (600-1)	1760-1½ 528 (600-1½)	1860-2 628 (700-2)	

BRAINERD, MINNESOTA  
Amdt 7A 29MAR18

46°24'N-94°08'W

BRAINERD LAKES RGNL (BRD)  
ILS or LOC RWY 23

NC-1, 07 AUG 2025 to 04 SEP 2025

NC-1, 07 AUG 2025 to 04 SEP 2025