

FREMONT, OHIO

AL-5181 (FAA)

23278

APP CRS	Rwy Idg	4011
095°	TDZE	663
	Apt Elev	663

# RNAV (GPS) RWY 9

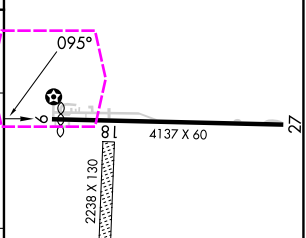
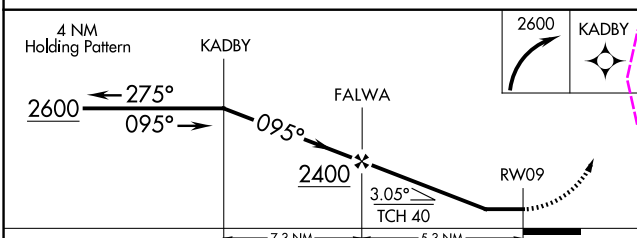
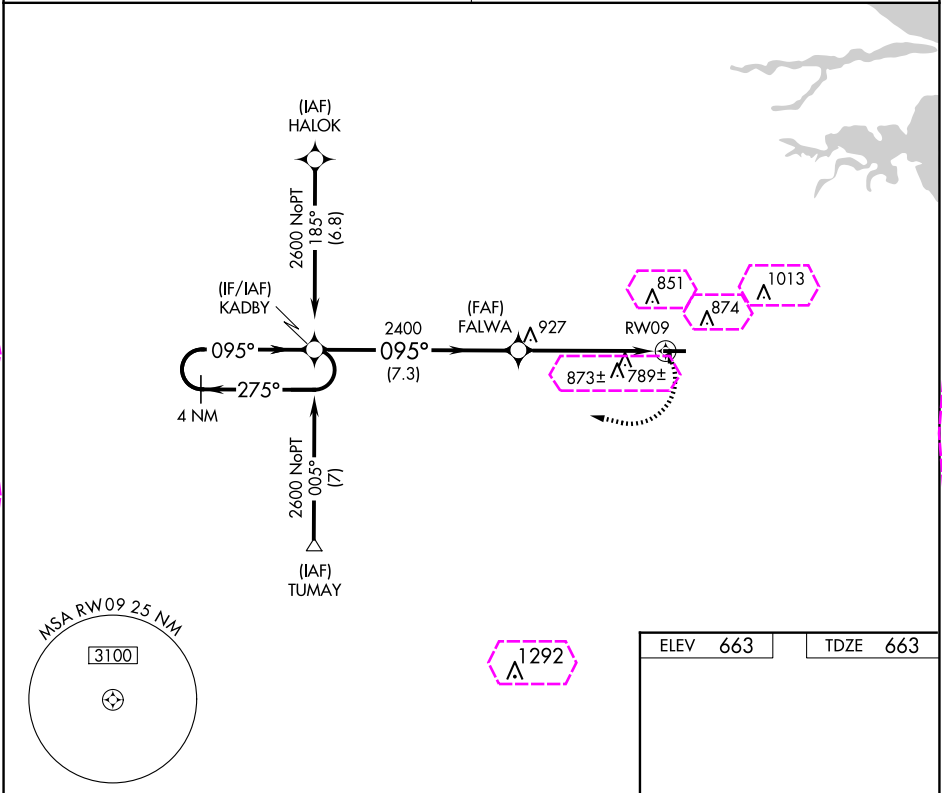
FREMONT (14G)

RNP APCH.

Procedure NA at night. Use Sandusky County Rgnl altimeter setting; when not received use Toledo Executive altimeter setting; increase all MDA 40 feet and LNAV Cat D and Circling Cat C and D visibility ¼ SM. Rwy 9 helicopter visibility reduction below 1 SM NA. Circling NA to Rwys 18-36.

MISSED APPROACH:  
Climbing right turn to 2600  
direct KADBY and hold.

TOLEDO APP CON	UNICOM
126.1 307.0	122.8 (CTAF) 0



CATEGORY	A	B	C	D
LNAV MDA	1080-1	417 (500-1)	1080-1¼	417 (500-1¼)
CIRCLING	1240-1	577 (600-1)	1240-1½ 577 (600-1½)	1380-2¼ 717 (800-2¼)

URL Rwy 9-27 0\*

FREMONT, OHIO  
Orig-C 25MAR21

41°20'N - 83°10'W

# RNAV (GPS) RWY 9

EC-2, 10 JUL 2025 to 07 AUG 2025

EC-2, 10 JUL 2025 to 07 AUG 2025

FREMONT, OHIO

AL-5181 (FAA)

25219

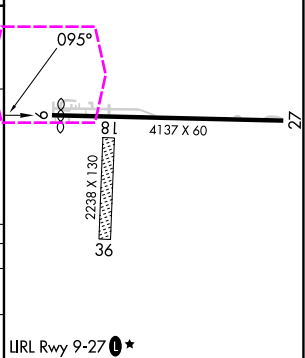
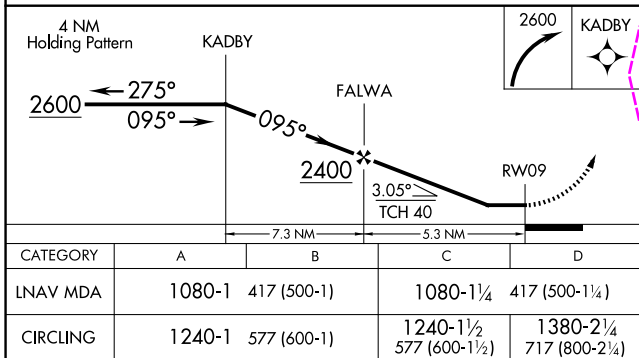
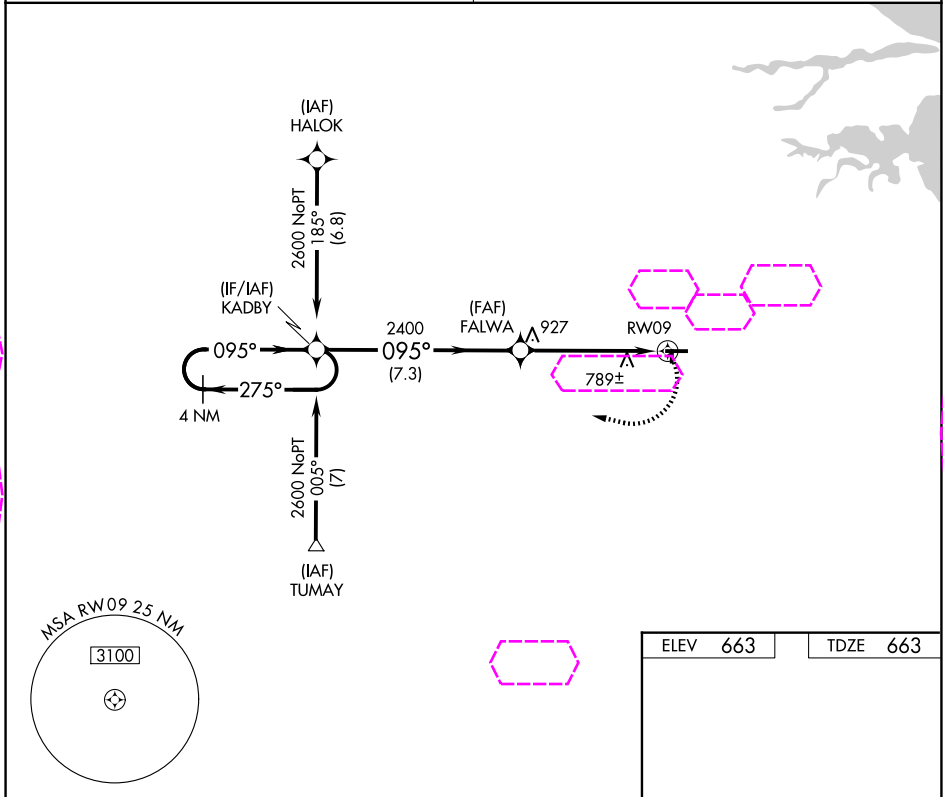
APP CRS	Rwy Ldg	4011
095°	TDZE	663
	Apt Elev	663

# RNAV (GPS) RWY 9

FREMONT (14G)

RNP APCH.	Procedure NA at night. Use Sandusky County Rgnl altimeter setting; when not received use Toledo Executive altimeter setting: increase all MDA 40 feet and LNAV Cat D and Circling Cat C and D visibility ¼ SM. Rwy 9 helicopter visibility reduction below 1 SM NA. Circling NA to Rwys 18-36.	MISSED APPROACH: Climbing right turn to 2600 direct KADBY and hold.
-----------	--	---

TOLEDO APP CON	UNICOM
126.1 307.0	122.8 (CTAF) 0



CATEGORY	A	B	C	D	LURL Rwy 9-27 0*
----------	---	---	---	---	------------------

LNAV MDA	1080-1	417 (500-1)	1080-1¼	417 (500-1¼)	
----------	--------	-------------	---------	--------------	--

CIRCLING	1240-1	577 (600-1)	1240-1½	1380-2¼	717 (800-2¼)
----------	--------	-------------	---------	---------	--------------

FREMONT, OHIO					FREMONT (14G)
---------------	--	--	--	--	---------------

Orig-C 25MAR21

41°20'N - 83°10'W

# RNAV (GPS) RWY 9

EC-2, 07 AUG 2025 to 04 SEP 2025

EC-2, 07 AUG 2025 to 04 SEP 2025