

WEST POINT, VIRGINIA

AL-5160 (FAA)

22363

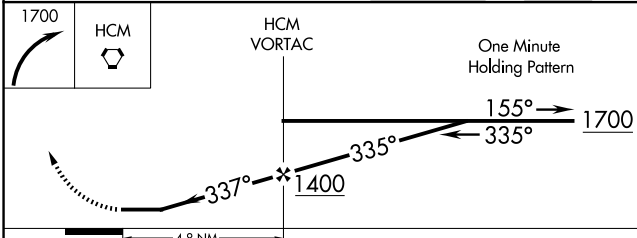
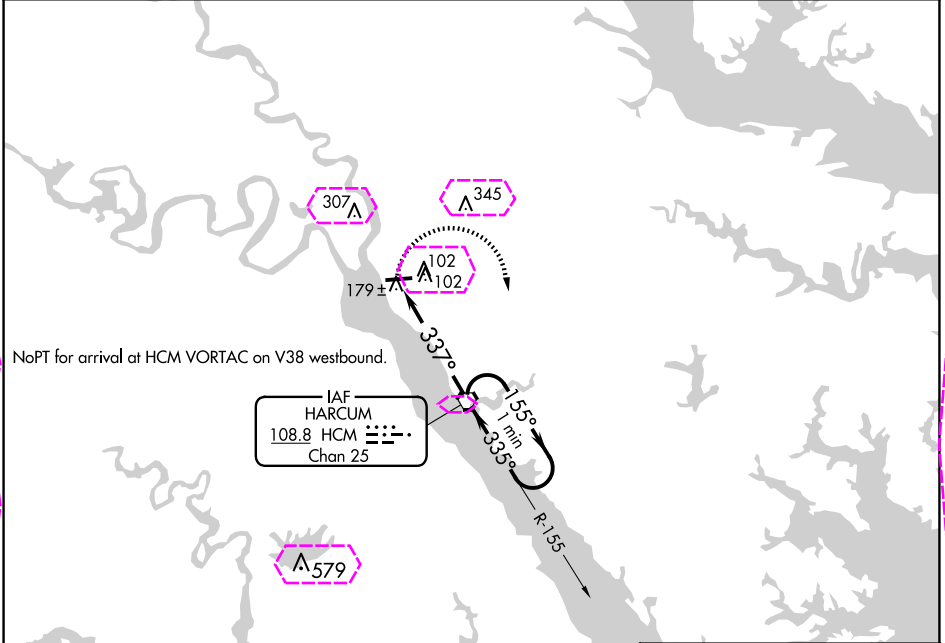
VORTAC HCM <b>108.8</b> Chan <b>25</b>	APP CRS <b>337°</b>	Rwy Idg TDZE Apt Elev <b>N/A</b> <b>N/A</b> <b>20</b>
--	------------------------	--

VOR-A

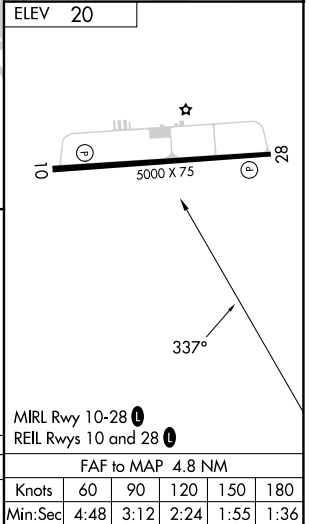
MIDDLE PENINSULA RGNL (F'YJ)

<p><b>▽</b> When local altimeter setting not received, use Newport News altimeter setting and increase all MDA 80 feet.</p> <p><b>⚠</b></p>	<p>MISSED APPROACH: Climbing right turn to 1700 direct HCM VORTAC and hold.</p>
---	---

AWOS-3 <b>132.825</b>	POTOMAC APP CON <b>126.4 282.375</b>	UNICOM <b>123.0 (CTAF) 0</b>
--------------------------	---	---------------------------------



CATEGORY	A	B	C	D
<b>CIRCLING</b>	480-1 460 (500-1)	620-1 600 (600-1)	NA	



WEST POINT, VIRGINIA  
Amdt 4A 15SEP16

37°31'N-76°46'W

MIDDLE PENINSULA RGNL (F'YJ)  
VOR-A

WEST POINT, VIRGINIA

AL-5160 (FAA)

25219

VORTAC HCM <b>108.8</b> Chan <b>25</b>	APP CRS <b>337°</b>	Rwy Ldg TDZE Apt Elev <b>N/A</b> <b>N/A</b> <b>20</b>
--	------------------------	--

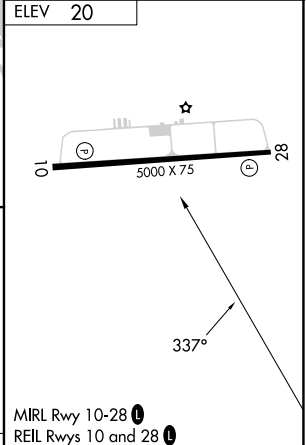
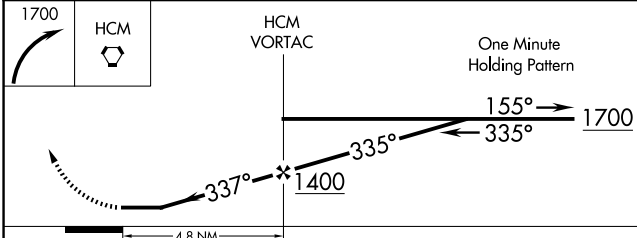
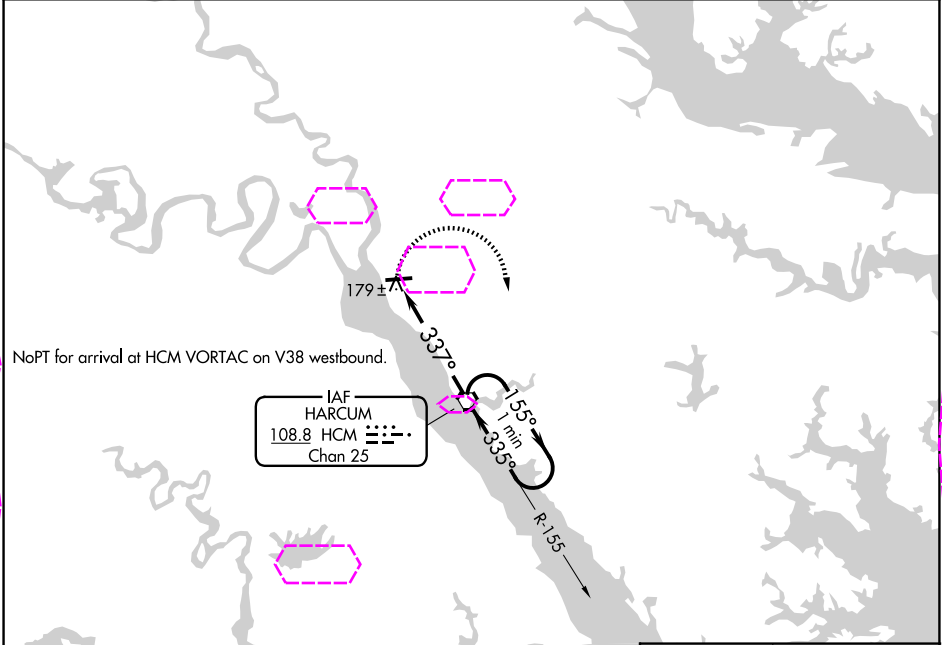
**VOR-A**  
MIDDLE PENINSULA RGNL (F'YJ)

**▼** When local altimeter setting not received, use Newport News altimeter setting and increase all MDA 80 feet.

**▲**

MISSED APPROACH: Climbing right turn to 1700 direct HCM VORTAC and hold.

AWOS-3 <b>132.825</b>	POTOMAC APP CON <b>126.4 282.375</b>	UNICOM <b>123.0 (CTAF) 0</b>
--------------------------	---	---------------------------------



CATEGORY	A	B	C	D	FAF to MAP 4.8 NM					
CIRCLING	480-1	620-1	NA		Knots	60	90	120	150	180
	460 (500-1)	600 (600-1)			Min:Sec	4:48	3:12	2:24	1:55	1:36

WEST POINT, VIRGINIA  
Amdt 4A 15SEP16

37°31'N-76°46'W

MIDDLE PENINSULA RGNL (F'YJ)  
**VOR-A**

NE-3, 07 AUG 2025 to 04 SEP 2025

NE-3, 07 AUG 2025 to 04 SEP 2025