

WEST POINT, VIRGINIA

AL-5160 (FAA)

22363

WAAS Ch 40317 W10A	APP CRS 097°	Rwy Idg TDZE 14 Apt Elev 20	5000
--	------------------------	---	-------------

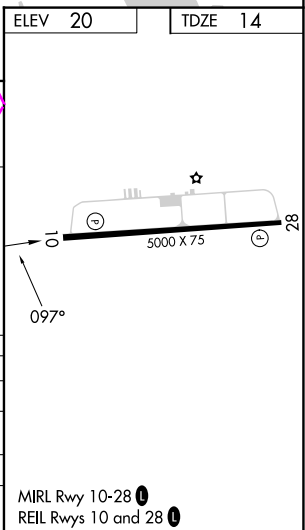
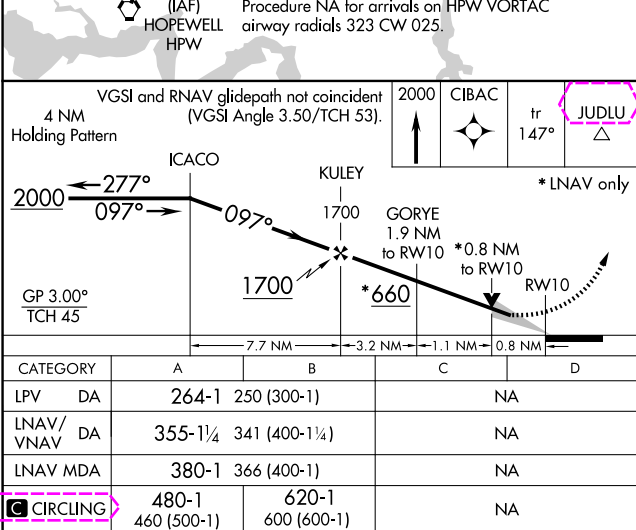
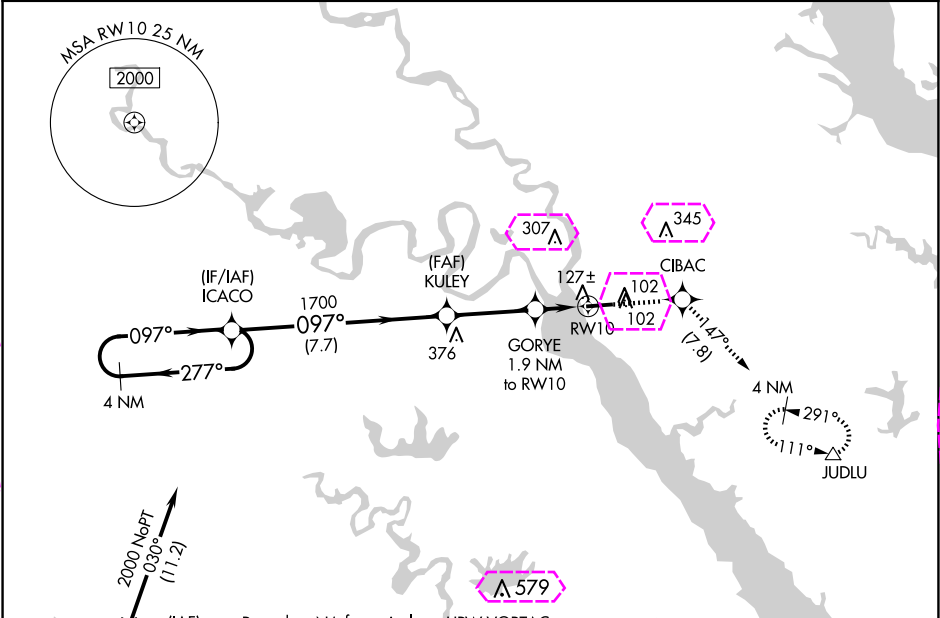
RNAV (GPS) RWY 10

MIDDLE PENINSULA RGNL (F'YJ)

⚠ For uncompensated Baro-VNAV systems, LNAV/VNAV NA below -15°C (5°F) or above 54°C (130°F). Baro-VNAV and VDP NA when using Newport News altimeter setting. DME/DME RNP-0.3 NA. When local altimeter setting not received, use Newport News altimeter setting: increase LPV DA to 329 feet; increase LNAV/VNAV DA to 420 feet and Cats A/B visibility ¼ SM; increase all MDA 80 feet.

MISSED APPROACH: Climb to 2000 direct CIBAC and on track 147° to JUDLU and hold.

AWOS-3 132.825	POTOMAC APP CON 126.4 282.375	UNICOM 123.0 (CTAF) 0
--------------------------	---	---------------------------------



WEST POINT, VIRGINIA
Amdt 1B 26MAR20

37°31'N-76°46'W

MIDDLE PENINSULA RGNL (F'YJ)
RNAV (GPS) RWY 10

WEST POINT, VIRGINIA

AL-5160 (FAA)

25219

WAAS Ch 40317 W10A	APP CRS 097°	Rwy Ldg TDZE 14 Apt Elev 20
--	------------------------	---

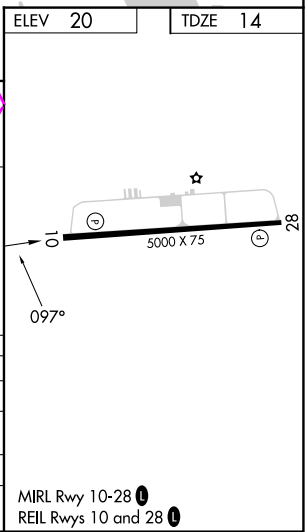
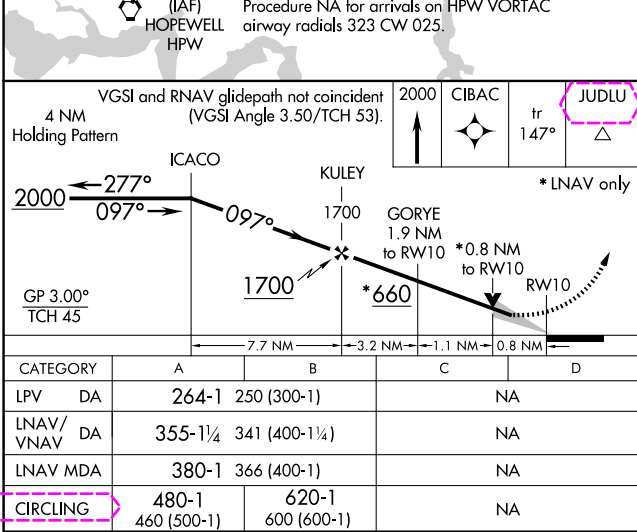
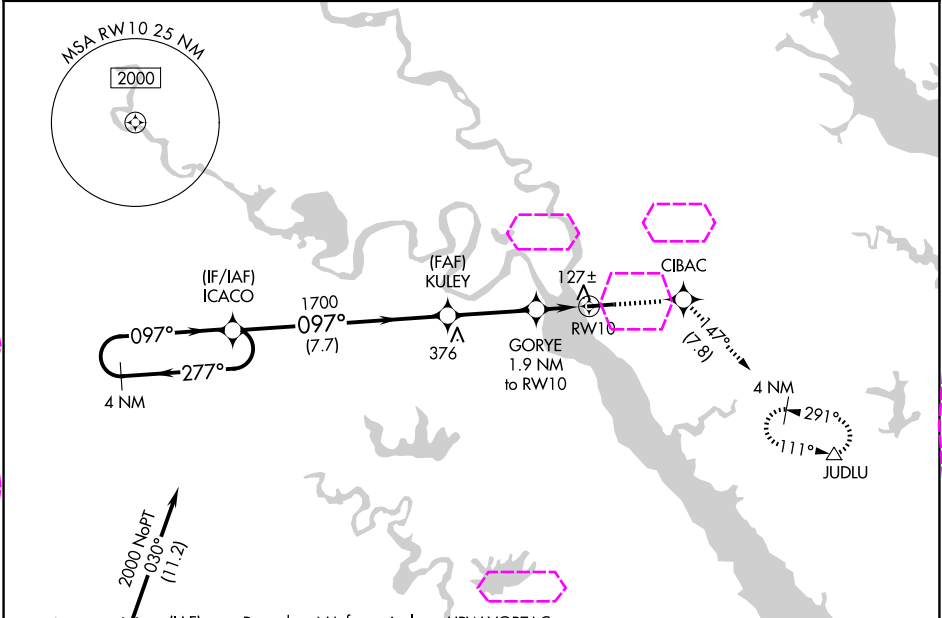
RNAV (GPS) RWY 10

MIDDLE PENINSULA RGNL (F'YJ)

⚠ For uncompensated Baro-VNAV systems, LNAV/VNAV NA below -15°C (5°F) or above 54°C (130°F). Baro-VNAV and VDP NA when using Newport News altimeter setting. DME/DME RNP-0.3 NA. When local altimeter setting not received, use Newport News altimeter setting: increase LPV DA to 329 feet; increase LNAV/VNAV DA to 420 feet and Cats A/B visibility ¼ SM; increase all MDA 80 feet.

MISSED APPROACH: Climb to 2000 direct CIBAC and on track 147° to JUDLU and hold.

AWOS-3 132.825	POTOMAC APP CON 126.4 282.375	UNICOM 123.0 (CTAF) 0
--------------------------	---	---------------------------------



WEST POINT, VIRGINIA
Amdt 1B 26MAR20

37°31'N-76°46'W

MIDDLE PENINSULA RGNL (F'YJ)
RNAV (GPS) RWY 10

NE-3, 07 AUG 2025 to 04 SEP 2025

NE-3, 07 AUG 2025 to 04 SEP 2025