

MINNEAPOLIS, MINNESOTA

AL-5158 (FAA)

24081

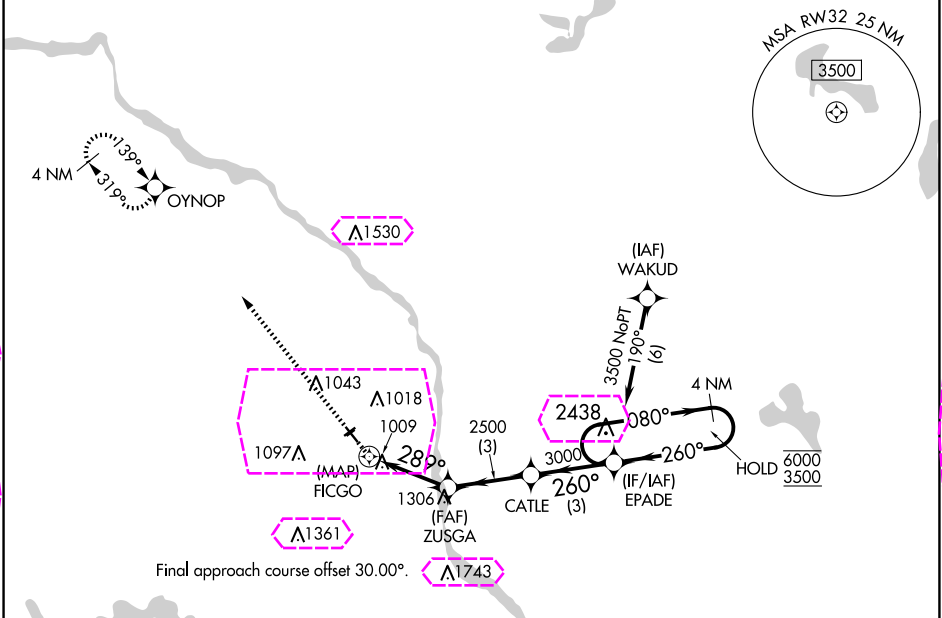
APP CRS	Rwy Idg	3509
289°	TDZE	869
	Apt Elev	869

# RNAV (GPS) RWY 32

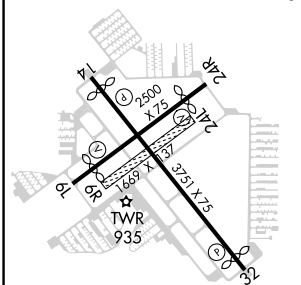
CRYSTAL (MIC)

RNP APCH.	MISSED APPROACH: Climb to 3000 direct OYNOP and hold.
Circling NA to Rwys 6R and 24L. Rwy 32 helicopter visibility reduction below 3/4 SM NA.	

ATIS 124.475	MINNEAPOLIS APP CON 126.5 335.65	CRYSTAL TOWER★ 120.7 (CTAF) 0	GND CON 121.6	CLNC DEL 121.6	CLNC DEL 121.6 (When twr closed)	UNICOM 122.95
-----------------	-------------------------------------	----------------------------------	------------------	-------------------	--	------------------



ELEV 869	D	TDZE 869
REIL Rwys 14 and 32 0		
MIRL Rwys 6L-24R and 14-32 0		



3000	OYNOP	EPADE 4 NM Holding Pattern			
ZUSGA		CATLE	EPADE		6000 3500
FICGO		ZUSGA		EPADE	
289°		260°		080°	
3000		3000		3000	
0.8		3 NM		3 NM	
CATEGORY	A	B	C	D	
LNAV MDA	1380-1	511 (600-1)	NA		
CIRCLING	1380-1	511 (600-1)	NA		

CRYSTAL (MIC)  
RNAV (GPS) RWY 32