

MINNEAPOLIS, MINNESOTA

AL-5158 (FAA)

24081

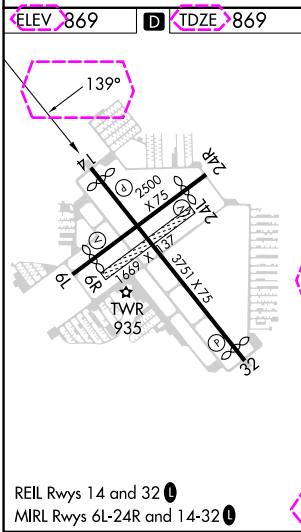
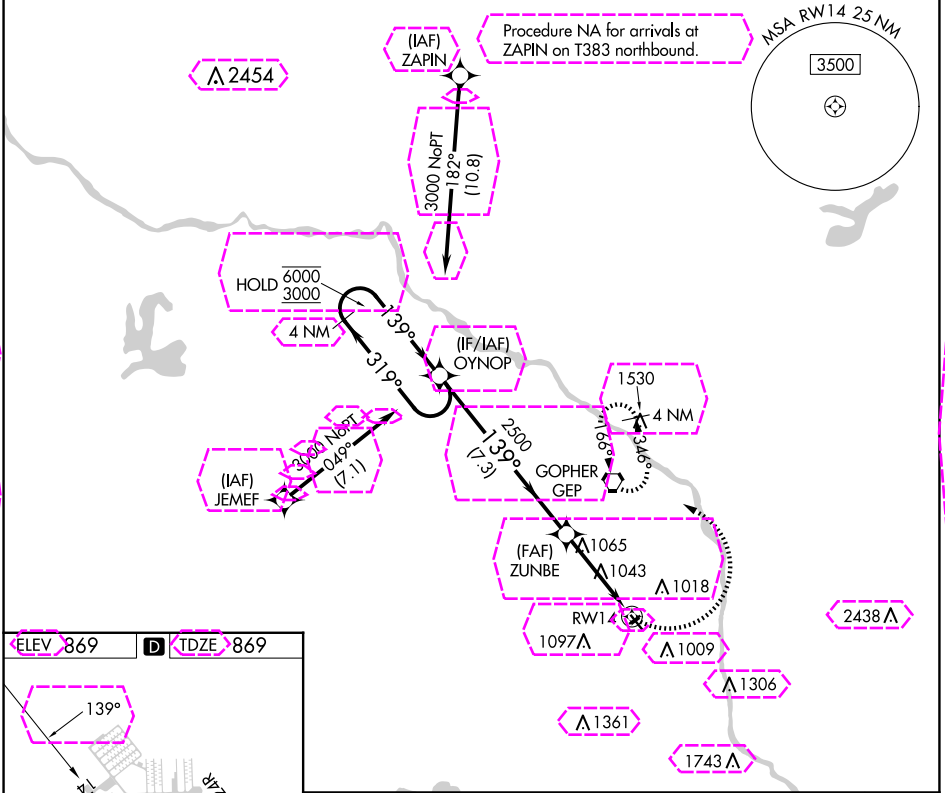
APP CRS 139°	Rwy Idg TDZE Apt Elev	3508 869 869
-----------------	-----------------------------	--------------------

RNAV (GPS) RWY 14

CRYSTAL (MIC)

RNP APCH. Circling NA to Rwys 6R and 24L. Rwy 14 helicopter visibility reduction below 3/4 SM NA.	MISSED APPROACH: Climbing left turn to 3100 direct GEP VORTAC and hold, continue climb-in-hold to 3100.
---	--

ATIS 124.475	MINNEAPOLIS APP CON 126.5 335.65	CRYSTAL TOWER ★ 120.7 (CTAF) 0	GND CON 121.6	CLNC DEL 121.6	CLNC DEL 121.6 (When twr closed)	UNICOM 122.95
-----------------	-------------------------------------	-----------------------------------	------------------	-------------------	--	------------------



<div>4 NM Holding Pattern</div> <div>OYNOP</div>			<div>3100</div> <div>GEP</div>	
<div>6000 ← 319°</div> <div>3000 → 139°</div>			<div>ZUNBE</div> <div>139°</div>	
<div>7.3 NM</div>			<div>4.00°</div> <div>TCH 37</div> <div>2500</div> <div>1 NM to RW14</div> <div>RW14</div>	
<div>2.8 NM</div>			<div>1 NM</div>	
CATEGORY	A	B	C	D
LNAV MDA	1320-1	451 (500-1)	NA	
<div>CIRCLING</div>	1340-1 471 (500-1)	1360-1 491 (500-1)	NA	

MINNEAPOLIS, MINNESOTA
Orig 31DEC20

45°04'N-93°21'W

CRYSTAL (MIC) RNAV (GPS) RWY 14

NC-1, 10 JUL 2025 to 07 AUG 2025

NC-1, 10 JUL 2025 to 07 AUG 2025

MINNEAPOLIS, MINNESOTA

AL-5158 (FAA)

25219

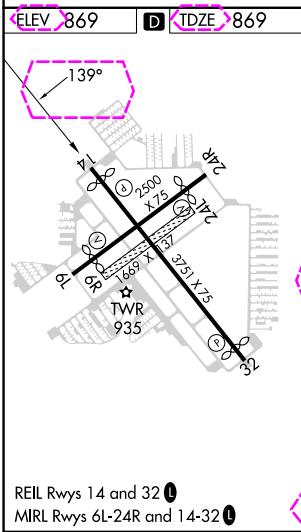
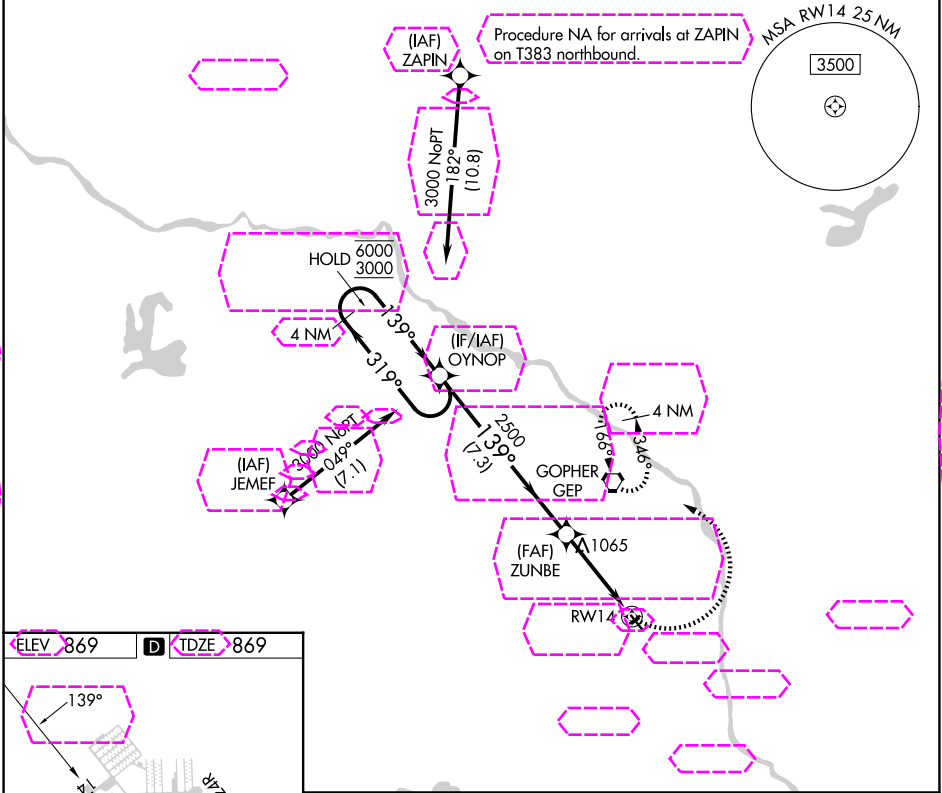
APP CRS 139°	Rwy Ldg TDZE Apt Elev	3508 869 869
-----------------	-----------------------------	--------------------

RNAV (GPS) RWY 14

CRYSTAL (MIC)

RNP APCH - GPS.	MISSED APPROACH: Climbing left turn to 3100 direct GEP VORTAC and hold, continue climb-in-hold to 3100.
▼ Rwy 14 helicopter visibility reduction below 3/4 SM NA. ▲ Circling NA to Rwy 6R and 24L.	

ATIS 124.475	MINNEAPOLIS APP CON 126.5 335.65	CRYSTAL TOWER ★ 120.7 (CTAF) 0	GND CON 121.6	CLNC DEL 121.6	CLNC DEL 121.6 (When twr closed)	UNICOM 122.95
-----------------	-------------------------------------	-----------------------------------	------------------	-------------------	--	------------------



<div><div>4 NM Holding Pattern</div><div>OYNOP</div></div>				<div><div>3100</div><div>GEP</div></div>	
<div><div>6000</div><div>319°</div><div>3000</div><div>139°</div></div>				<div><div>ZUNBE</div><div>139°</div></div>	
<div><div>2500</div><div>4.00°</div><div>TCH 37</div></div>				<div><div>1 NM to RWY 14</div><div>RWY 14</div></div>	
<div><div>7.3 NM</div><div>2.8 NM</div><div>1 NM</div></div>					
CATEGORY	A	B	C	D	
LNAV MDA	1320-1 451 (500-1)			NA	
CIRCLING	1340-1 471 (500-1) 1380-1 511 (600-1)			NA	

MINNEAPOLIS, MINNESOTA

Orig-A 07AUG25

45°04'N-93°21'W

RNAV (GPS) RWY 14

CRYSTAL (MIC)

NC-1, 07 AUG 2025 to 04 SEP 2025

NC-1, 07 AUG 2025 to 04 SEP 2025