

GREENVILLE, TEXAS

AL-5138 (FAA)

25219

VORTAC BYP	APP CRS	Rwy Ldg	8030
114.6	157°	TDZE	534
Chan 93		Apt Elev	535

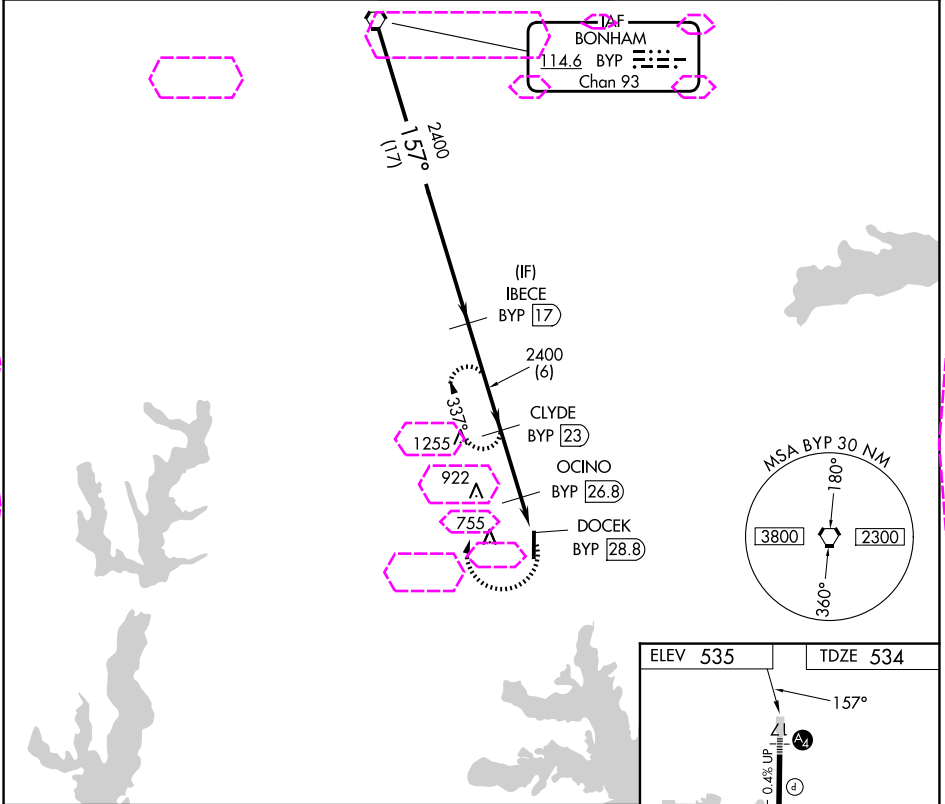
VOR/DME RWY 17
MAJORS (GVT)

⚠ When local altimeter setting not received, use Terrell altimeter setting and increase all MDA 80 feet, increase Circling Cats C/D/E visibility by ¼ SM.

⚠ MISSED APPROACH: Climbing right turn to 2400 via BYP R-157 to CLYDE /23 DME and hold.

MALS

AWOS-3 133.425	FORT WORTH CENTER 132.025 317.75	MAJORS TOWER ★ 118.65 (CTAF) 385.425	GND CON 121.7 335.8	UNICOM 122.95
-------------------	-------------------------------------	---	------------------------	------------------

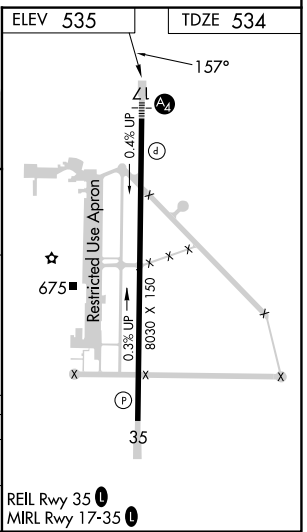


VGSI and descent angles not coincident (VGSI Angle 3.00/TCH 74).

Procedure Turn NA	BYP VORTAC	IBECE BYP 17	CLYDE BYP 23	OCINO BYP 26.8	DOCEK BYP 28.8
	2400	2400	2400	1240	3.16° TCH 50
	17 NM	6 NM	3.8 NM	2 NM	

*1300 when using Terrell Muni altimeter setting.

CATEGORY	A	B	C	D	E
S-17	1120-1 586 (600-1)	1120-1¼ 586 (600-1¼)	1120-1½ 586 (600-1½)	1120-2 586 (600-2)	
CIRCLING	1120-1 585 (600-1)	1120-1¼ 585 (600-1¼)	1120-1½ 585 (600-1½)	1240-2¼ 705 (800-2¼)	1300-2¾ 765 (800-2¾)



GREENVILLE, TEXAS
Amdt 1A 18JUN20

33°04'N-96°04'W

MAJORS (GVT)
VOR/DME RWY 17

SC-2, 07 AUG 2025 to 04 SEP 2025

SC-2, 07 AUG 2025 to 04 SEP 2025