

GREENVILLE, TEXAS

AL-5138 (FAA)

24305

TACAN MJF Chan <b>33</b> <b>(109.6)</b>	APP CRS <b>167°</b>	Rwy Idg <b>8030</b> TDZE <b>534</b> Apt Elev <b>535</b>
---	------------------------	---

TACAN RWY 17  
MAJORS (GVT)

**T**  
**A** For inop ALS, increase S-17 Cat E visibility to 1½ SM.

MALS

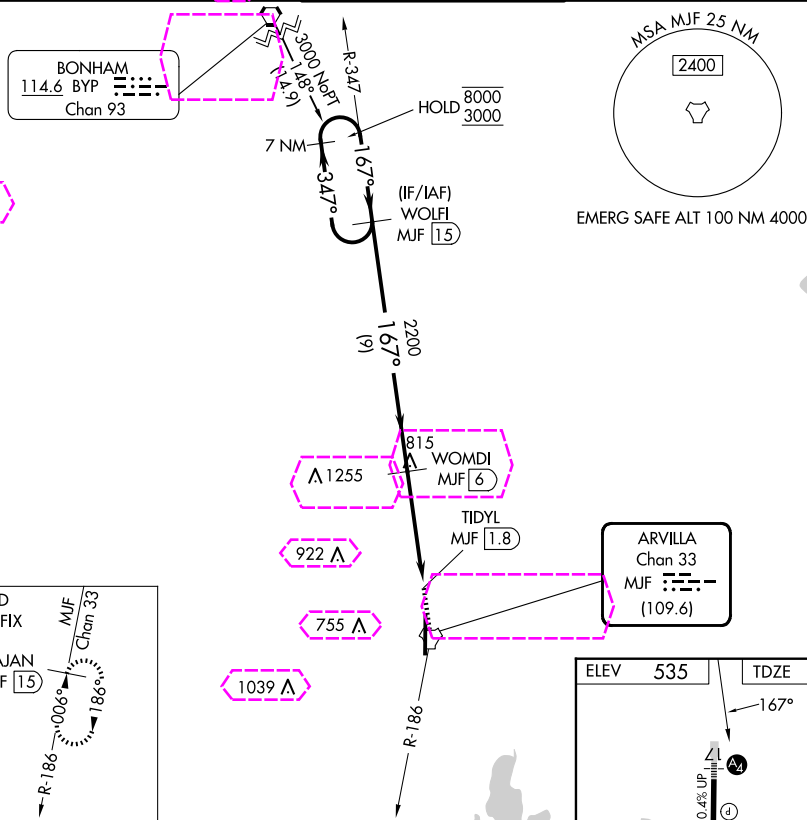
MISSED APPROACH: Climb to 1200 then climbing right turn to 3000 on MJF TACAN R-186 to CAJAN/MJF 15 DME and hold

AWOS-3  
133,425

FORT WORTH CENTER  
132,025 360.75

MAJORS TOWER ★  
118.65 (CTAF) **L** 385.425

GND CON  
**121.7 335.8**

UNICOM  
122.95

7 NM  
Holding Pattern

WOLFI  
MJF 15

1200  
↑

3000

MJF

CAJAN  
MIE 15
$$\begin{array}{r} 8000 \\ 3000 \\ \hline \end{array}$$
$$\begin{array}{r} \leftarrow 347 \\ \hline 167 \end{array}$$

W

OMDI

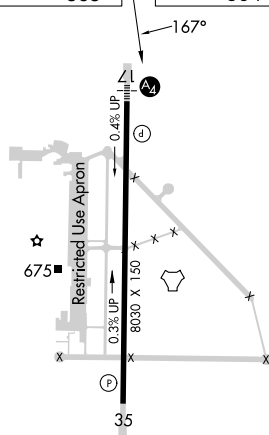
TIDY

TACA

7	
---	--

ELEV	535
------	-----

TDZE 534



CATEGORY	A	B	C	D	E
S-TACAN 17	1060-1	526 (600-1)	1060-1 $\frac{1}{4}$	526 (600-1 $\frac{1}{4}$ )	
CIRCLING	1060-1 $\frac{1}{4}$	525 (600-1 $\frac{1}{4}$ )	1060-1 $\frac{1}{2}$ 525 (600-1 $\frac{1}{2}$ )	1240-2 $\frac{1}{4}$ 705 (800-2 $\frac{1}{4}$ )	1300-2 $\frac{3}{4}$ 765 (800-2 $\frac{3}{4}$ )

REIL Rwy 35 **L**  
MIRI Rwy 17-35 **L**

GREENVILLE, TEXAS

33°04'N-96°04'W

MAJORS (GVT)

Orig-C 29DEC22

TACAN RWY 17

SC-2, 10 JUL 2025 to 07 AUG 2025

SC-2, 10 JUL 2025 to 07 AUG 2025

GREENVILLE, TEXAS


AL-5138 (FAA)

25219

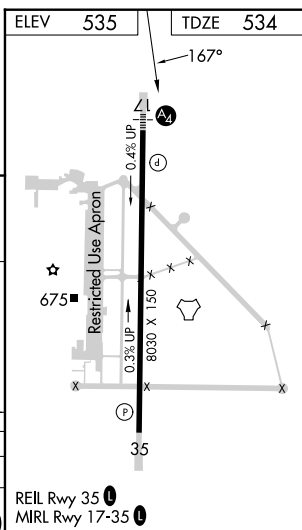
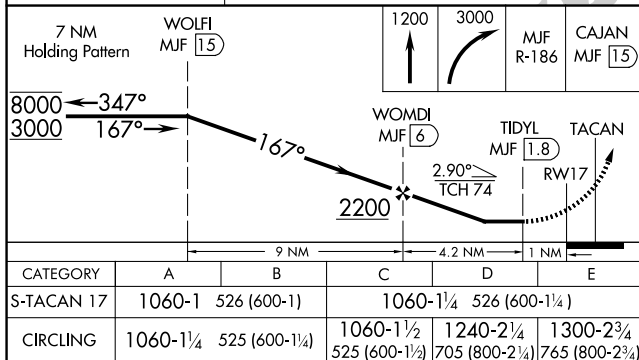
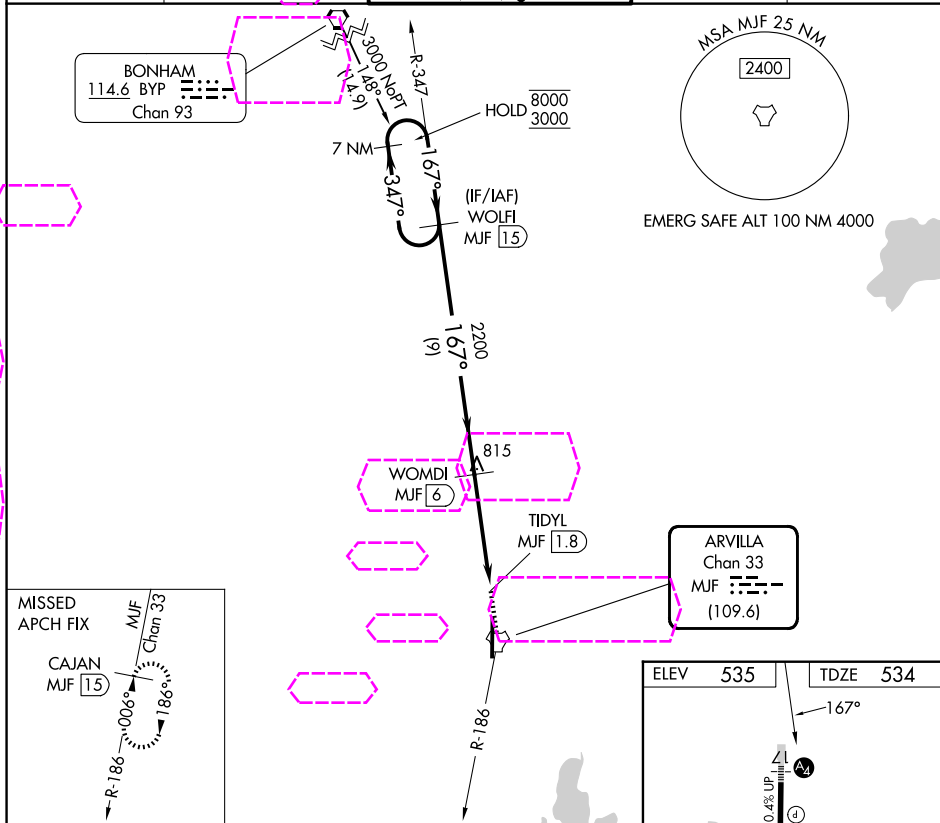
TACAN MJF Chan <b>33</b> (109.6)	APP CRS <b>167°</b>	Rwy Ldg TDZE <b>534</b> Apt Elev <b>535</b>
--	------------------------	---

# TACAN RWY 17

MAJORS (GVT)

<b>MAIS</b> 	MISSED APPROACH: Climb to 1200 then climbing right turn to 3000 on MJF TACAN R-186 to CAJAN/MJF 15 DME and hold.
--	--

AWOS-3 <b>133.425</b>	FORT WORTH CENTER <b>132.025 317.75</b>	MAJORS TOWER ★ <b>118.65 (CTAF) 385.425</b>	GND CON <b>121.7 335.8</b>	UNICOM <b>122.95</b>
--------------------------	--	--	-------------------------------	-------------------------



GREENVILLE, TEXAS

33°04'N-96°04'W

Orig-C 29DEC22

MAJORS (GVT)

TACAN RWY 17

SC-2, 07 AUG 2025 to 04 SEP 2025

SC-2, 07 AUG 2025 to 04 SEP 2025