

SC-2, 10 JUL 2025 to 07 AUG 2025

GREENVILLE, TEXAS

AL-5138 (FAA)

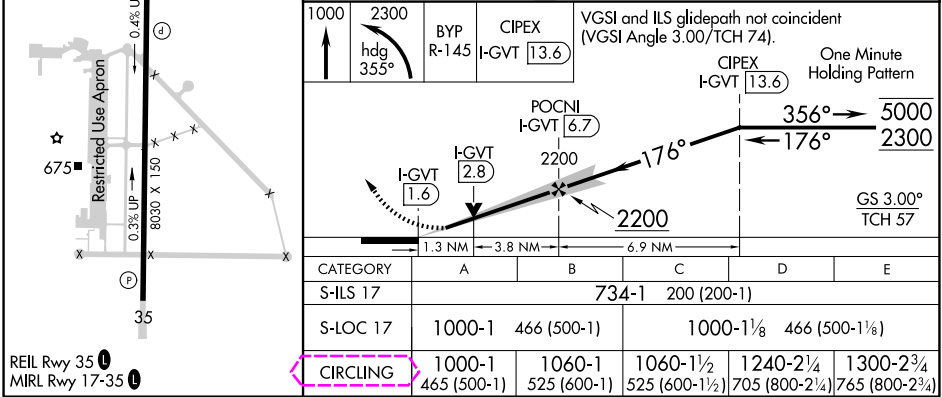
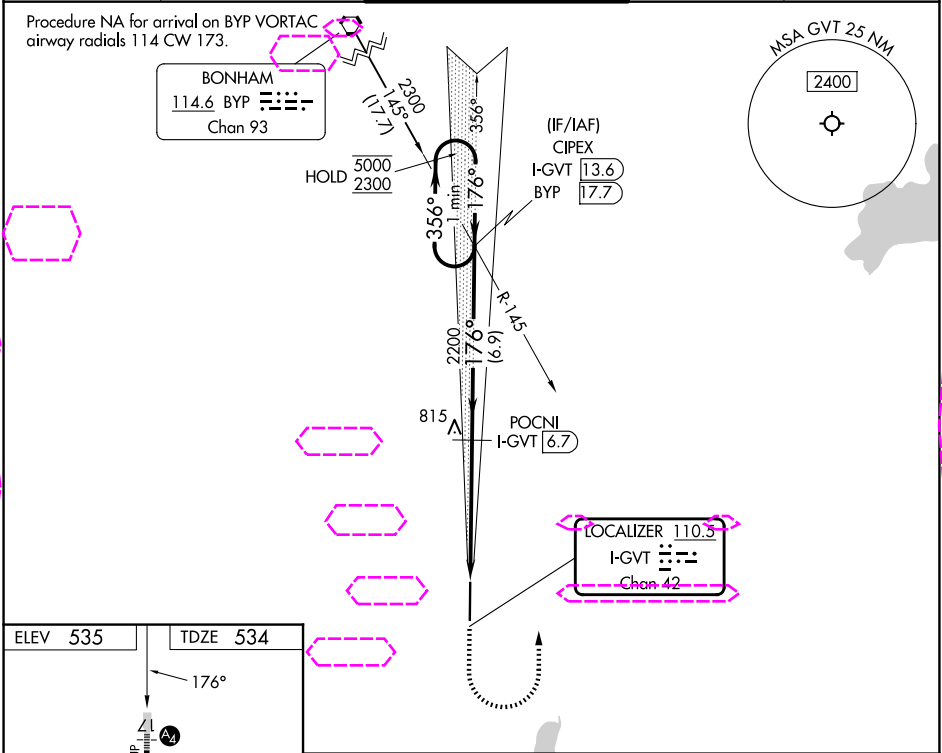
25219

LOC/DME I-GVT <b>110.5</b> Chan <b>42</b>	APP CRS <b>176°</b>	Rwy Ldg TDZE <b>534</b> Apt Elev <b>535</b>
---	------------------------	---

ILS Z or LOC Z RWY 17  
MAJORS (GVT)

DME required.	MALS	MISSED APPROACH: Climb to 1000 then climbing left turn to 2300 on heading 355° and BYP VORTAC R-145 to CIPEX/I-GVT 13.6 DME and hold.
Inop table does not apply to S-ILS 17 all Cats and S-LOC 17 Cats A/B. For inop ALS, increase S-LOC 17 Cat E visibility to 1 3/8 SM. Autopilot coupled approach NA below 900 feet.		

AWOS-3 <b>133.425</b>	FORT WORTH CENTER <b>132.025 317.75</b>	MAJORS TOWER ★ <b>118.65 (CTAF) 385.425</b>	GND CON <b>121.7 335.8</b>	UNICOM <b>122.95</b>
--------------------------	--	--	-------------------------------	-------------------------



GREENVILLE, TEXAS  
Amdt 9 29DEC22

33°04'N-96°04'W

MAJORS (GVT)

ILS Z or LOC Z RWY 17

SC-2, 07 AUG 2025 to 04 SEP 2025

SC-2, 07 AUG 2025 to 04 SEP 2025