

GREENVILLE, TEXAS


AL-5138 (FAA)

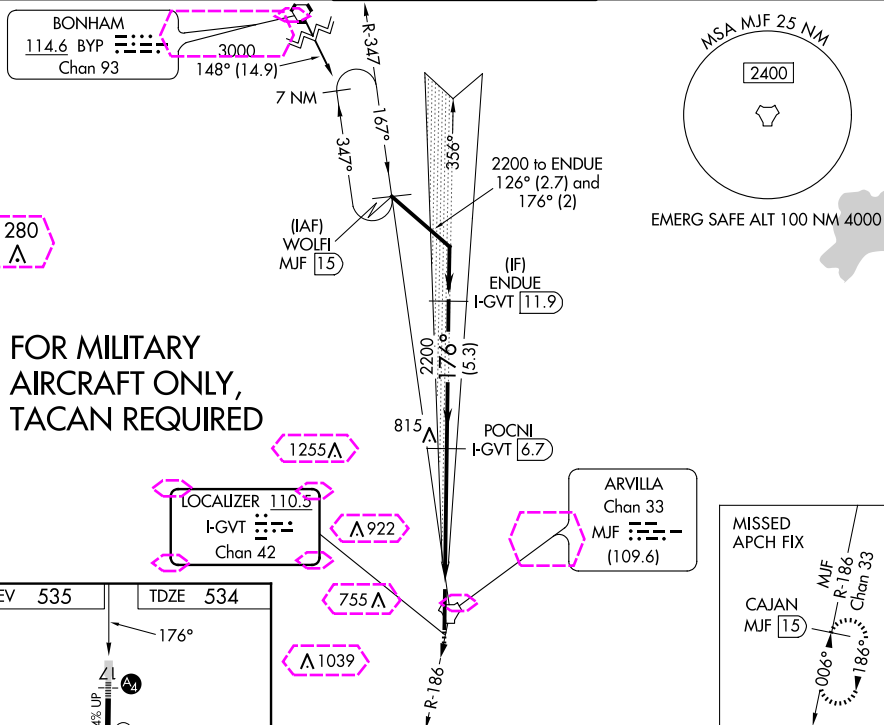
23110

| | | | |
|---|------------------------|-----------------------------|---|
| LOC/DME I-GVT 110.5 Chan 42 | APP CRS 176° | Rwy Idg TDZE Apt Elev | 8030 534 535 |
|---|------------------------|-----------------------------|---|

ILS Y or LOC Y RWY 17

MAJORS (GVT)

| | | | | | |
|---|--|--|--|--|--|
| DME required. | | | <div>MALS</div> <div></div> | <div>MISSED APPROACH: Climbing right turn to 3000 on MUF TACAN R-186 to CAJAN/MUF TACAN 15 DME and hold.</div> | |
| <div><div><div><div></div><div></div></div><div><div></div><div></div></div></div><div>Inop table does not apply to S-ILS 17 all Cats and S-LOC 17 Cats A/B. For inop ALS, increase S-LOC 17 Cat E visibility to 1½ SM. Autopilot coupled approach NA below 900 feet.</div></div> | | | | | |
| <div>AWOS-3</div> <div>133.425</div> | <div>FORT WORTH CENTER</div> <div>132.025 360.75</div> | <div>MAJORS TOWER ★</div> <div>118.65 (CTAF) 385.425</div> | <div>GND CON</div> <div>121.7 335.8</div> | <div>UNICOM</div> <div>122.95</div> | |



| | | | | | | |
|---|-----------|-----------------|---|----------------------|----------------------|-----------------|
| 3000 | MUF R-186 | CAJAN MUF 15 | VGSi and ILS glidepath not coincident (VGSi Angle 3.00/TCH 74). | | | |
| | | POCNI I-GVT 6.7 | ENDUE I-GVT 11.9 | | | |
| I-GVT 1.6 | | I-GVT 3 | 2200 | 176° | 2200 | GS 3.00° TCH 57 |
| Use I-GVT DME when on localizer course. | | | | | | |
| 1.5 NM | | 3.6 NM | 5.3 NM | | | |
| CATEGORY | A | B | C | D | E | |
| S-ILS 17 | 734-1 | | 200 (200-1) | | | |
| S-LOC 17 | 1060-1 | 526 (600-1) | 1060-1½ 526 (600-1½) | | | |
| CIRCLING | 1060-1 | 525 (600-1) | 1060-1½ 525 (600-1½) | 1240-2¼ 705 (800-2¼) | 1300-2¾ 765 (800-2¾) | |

REIL Rwy 35
MIRL Rwy 17-35

GREENVILLE, TEXAS
Amdt 1B 29DEC22

33°04'N-96°04'W

MAJORS (GVT)

ILS Y or LOC Y RWY 17

SC-2, 10 JUL 2025 to 07 AUG 2025

SC-2, 10 JUL 2025 to 07 AUG 2025

GREENVILLE, TEXAS

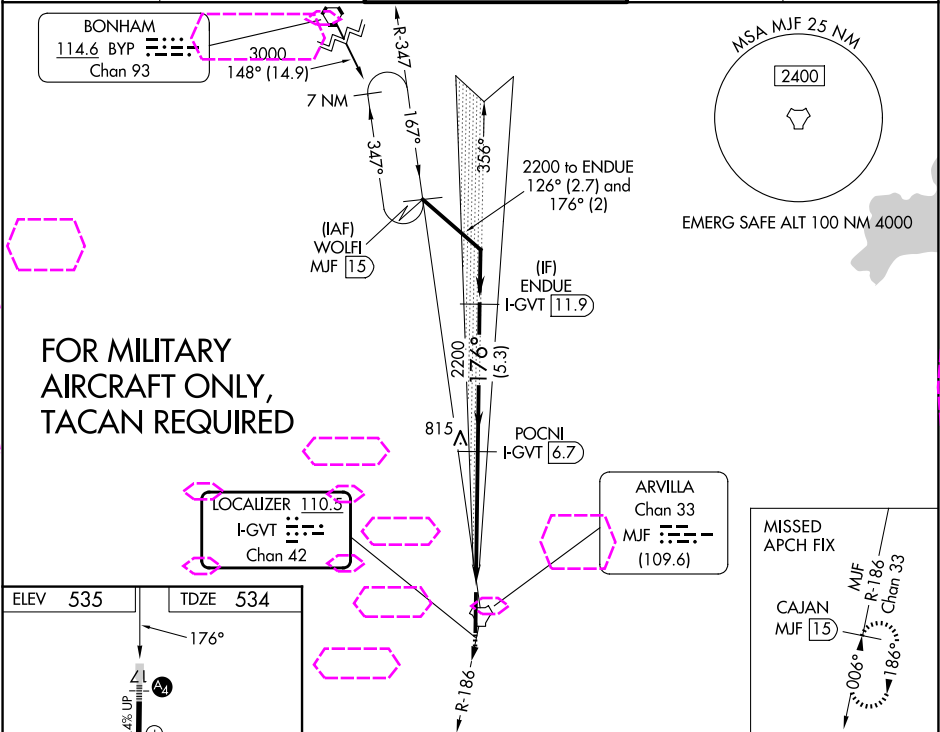
AL-5138 (FAA)

25219

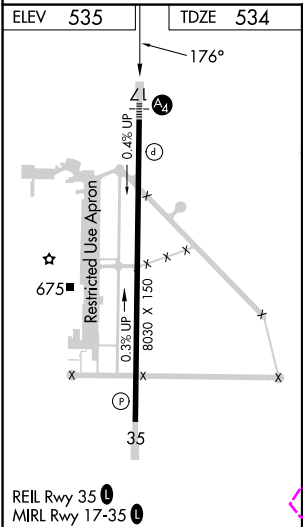
| | | |
|---|------------------------|---|
| LOC/DME I-GVT 110.5 Chan 42 | APP CRS 176° | Rwy Ldg TDZE 534 Apt Elev 535 |
|---|------------------------|---|

ILS Y or LOC Y RWY 17
MAJORS (GVT)

| | | | | |
|--|--|--|-------------------------------|--|
| DME required. ▲ Inop table does not apply to S-ILS 17 all Cats and S-LOC 17 Cats A/B. For inop ALS, increase S-LOC 17 Cat E visibility to 1½ SM. Autopilot coupled approach NA below 900 feet. | | | MALS ▲ | MISSED APPROACH: Climbing right turn to 3000 on MUF TACAN R-186 to CAJAN/MUF TACAN 15 DME and hold. |
| AWOS-3 133.425 | FORT WORTH CENTER 132.025 317.75 | MAJORS TOWER ★ 118.65 (CTAF) 385.425 | GND CON 121.7 335.8 | UNICOM 122.95 |



FOR MILITARY
AIRCRAFT ONLY,
TACAN REQUIRED



| | | | | | |
|----------|-----------|--------------|---|----------------------|----------------------|
| 3000 | MUF R-186 | CAJAN MUF 15 | VGSI and ILS glidepath not coincident (VGSI Angle 3.00/TCH 74). | | |
| | | | POCNI I-GVT 6.7 | ENDUE I-GVT 11.9 | |
| | | | 2200 | 2200 | 2200 |
| | | | I-GVT 1.6 | I-GVT 3 | I-GVT 11.9 |
| | | | 1.5 NM | 3.6 NM | 5.3 NM |
| | | | Use I-GVT DME when on localizer course. | | |
| CATEGORY | A | B | C | D | E |
| S-ILS 17 | 734-1 | | 200 (200-1) | | |
| S-LOC 17 | 1060-1 | 526 (600-1) | 1060-1½ 526 (600-1½) | | |
| CIRCLING | 1060-1 | 525 (600-1) | 1060-1½ 525 (600-1½) | 1240-2¼ 705 (800-2¼) | 1300-2¾ 765 (800-2¾) |

GREENVILLE, TEXAS
Amdt 1B 29DEC22

33°04'N-96°04'W

MAJORS (GVT)
ILS Y or LOC Y RWY 17

SC-2, 07 AUG 2025 to 04 SEP 2025

SC-2, 07 AUG 2025 to 04 SEP 2025