

AUBURN, ALABAMA

AL-5127 (FAA)

25163

WAAS CH <b>58304</b> <b>W36A</b>	APP CRS <b>005°</b>	Rwy Ldg TDZE <b>759</b> Apt Elev <b>777</b>
--	------------------------	---

# RNAV (GPS) RWY 36

AUBURN UNIVERSITY RGNL (AUO)

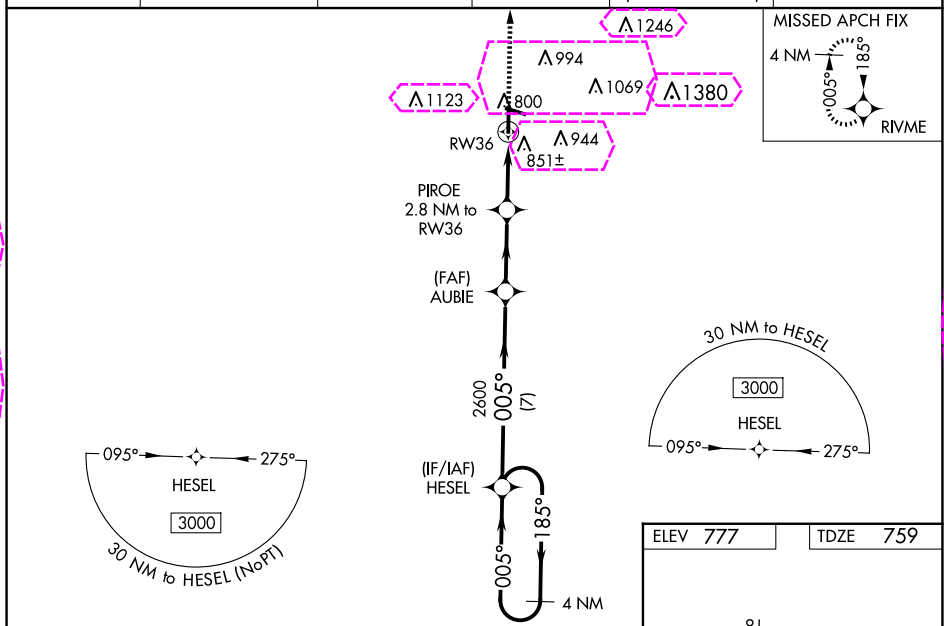
For uncompensated Baro-VNAV systems, LNAV/VNAV NA below -16°C (4°F) or above 54°C (130°F). Baro-VNAV and VDP NA when using Columbus altimeter setting. DME/DME RNP-0.3 NA. When local altimeter setting not received, use Columbus altimeter setting: increase LPV DA to 1072 feet and visibility all Cats ½ SM; increase LNAV/VNAV DA to 1173 feet and visibility all Cats ¾ SM; increase all MDA 120 feet and LNAV Cats C/D visibility ¼ SM and Circling Cats C/D visibility ½ SM. For inop ALS, increase LNAV/VNAV Cat D visibility ¼ SM and LNAV Cat D visibility ½ SM. For inop ALS, when using Columbus altimeter setting, increase LPV all Cats visibility to 1 ½ SM, LNAV/VNAV all Cats visibility to 1 ½ SM, and LNAV all Cats visibility to 1 ¾ SM.

MALSF

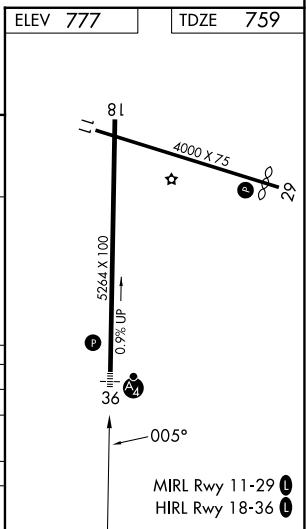


MISSED APPROACH:  
Climb to 3000 direct  
RIVME and hold.

AWOS-3PT <b>132.575</b>	ATLANTA APP CON ★ <b>125.5 323.1</b>	AUBURN TOWER ★ <b>123.875</b>	GND CON <b>121.625</b>	CLNC DEL <b>118.7</b> (When twr closed)	UNICOM <b>123.0</b> (CTAF) <b>0</b>
----------------------------	---	----------------------------------	---------------------------	---	--



4 NM Holding Pattern		HESEL	AUBIE	PIROE	RW36
3000		185°	005°	2600	2600
GP 3.00°		TCH 44			
7 NM		2.9 NM	1.7 NM	1.1 NM	
CATEGORY	A	B	C	D	
LPV DA		959-¾	200 (200-¾)		
LNAV/VNAV DA		1060-¾	301 (300-¾)		
LNAV MDA	1120-¾	361 (400-¾)	1120-¾	361 (400-¾)	
CIRCLING	1280-1	1360-1	1380-1¾	1480-2¼	
	503 (600-1)	583 (600-1)	603 (700-1¾)	703 (800-2¼)	



AUBURN, ALABAMA  
Amdt 2C 10NOV16

32°37'N-85°26'W

AUBURN UNIVERSITY RGNL (AUO)  
RNAV (GPS) RWY 36

AUBURN, ALABAMA

AL-5127 (FAA)

25219

WAAS CH <b>58304</b> <b>W36A</b>	APP CRS <b>005°</b>	Rwy Ldg TDZE <b>759</b> Apt Elev <b>777</b>
--	------------------------	---

**RNAV (GPS) RWY 36**  
AUBURN UNIVERSITY RGNL (AUO)

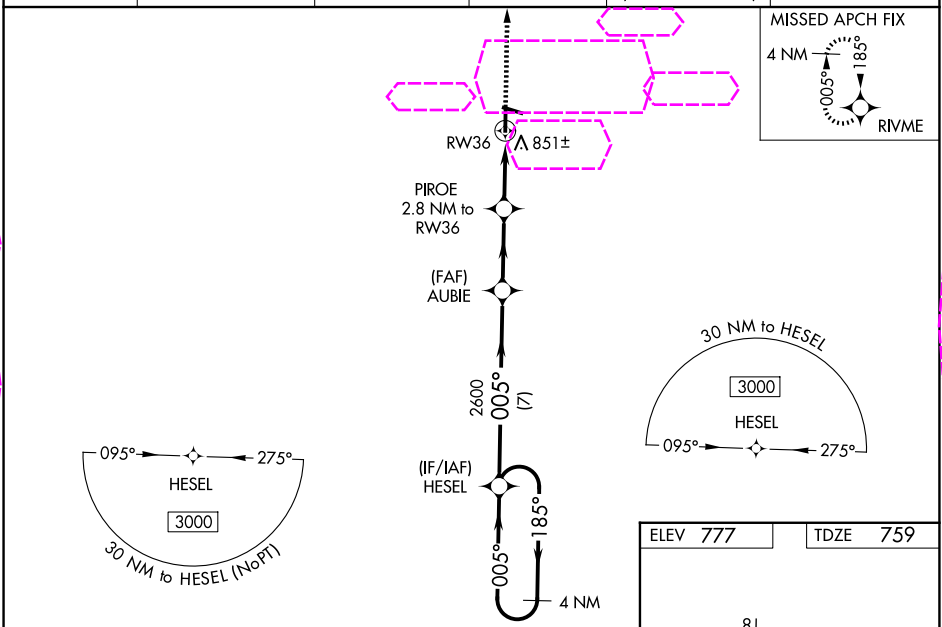
**⚠** For uncompensated Baro-VNAV systems, LNAV/VNAV NA below -16°C (4°F) or above 54°C (130°F). Baro-VNAV and VDP NA when using Columbus altimeter setting.

**⚠** DME/DME RNP-0.3 NA. When local altimeter setting not received, use Columbus altimeter setting: increase LPV DA to 1072 feet and visibility all Cats ½ SM; increase LNAV/VNAV DA to 1173 feet and visibility all Cats ¾ SM; increase all MDA 120 feet and LNAV Cats C/D visibility ¼ SM and Circling Cats C/D visibility ½ SM. For inop ALS, increase LNAV/VNAV Cat D visibility ¼ SM and LNAV Cat D visibility ½ SM. For inop ALS, when using Columbus altimeter setting, increase LPV all Cats visibility to 1 ½ SM, LNAV/VNAV all Cats visibility to 1 ½ SM, and LNAV all Cats visibility to 1 ¾ SM.

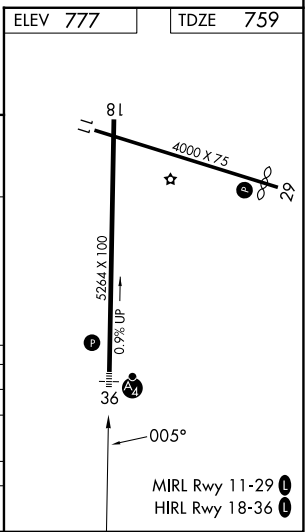
**MALSF**

**MISSED APPROACH:**  
Climb to 3000 direct RIVME and hold.

AWOS-3PT <b>132.575</b>	ATLANTA APP CON ★ <b>125.5 323.1</b>	AUBURN TOWER ★ <b>123.875</b>	GND CON <b>121.625</b>	CLNC DEL <b>118.7</b> (When twr closed)	UNICOM <b>123.0</b> (CTAF) <b>0</b>
----------------------------	---	----------------------------------	---------------------------	---	--



4 NM Holding Pattern		HESEL		AUBIE		PIROE		RW36	
3000		185°		005°		005°		2600	
GP 3.00°		TCH 44		2600		*1660		*1.1 NM to RW36	
7 NM		2.9 NM		1.7 NM		1.1 NM			
CATEGORY	A	B		C		D			
LPV DA	959-3/4 200 (200-3/4)								
LNAV/VNAV DA	1060-7/8 301 (300-7/8)								
LNAV MDA	1120-3/4	361 (400-3/4)		1120-7/8		361 (400-7/8)			
CIRCLING	1280-1 503 (600-1)	1360-1 583 (600-1)		1380-1 3/4 603 (700-1 3/4)		1480-2 1/4 703 (800-2 1/4)			



AUBURN, ALABAMA  
Amdt 2C 10NOV16

32°37'N-85°26'W

AUBURN UNIVERSITY RGNL (AUO)  
**RNAV (GPS) RWY 36**

SE-4, 07 AUG 2025 to 04 SEP 2025

SE-4, 07 AUG 2025 to 04 SEP 2025