

AUBURN, ALABAMA

AL-5127 (FAA)

25163

APP CRS	Rwy Ldg	3703
291°	TDZE	770
	Apt Elev	777

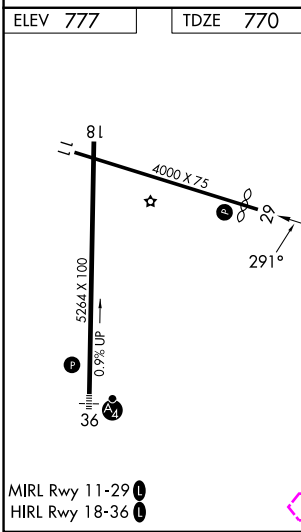
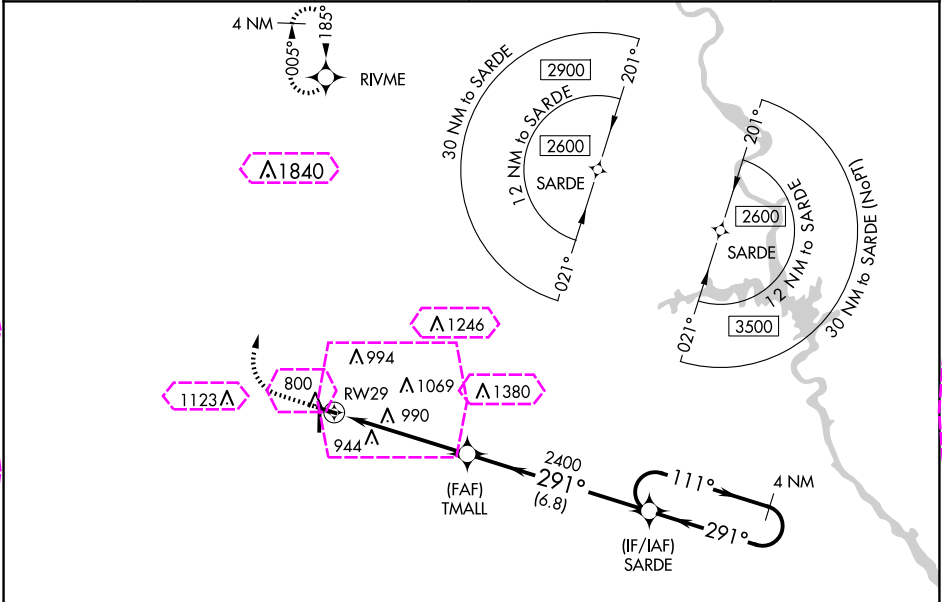
RNAV (GPS) RWY 29

AUBURN UNIVERSITY RGNL (AUO)

⚠ DME/DME RNP-0.3 NA. VDP NA when using Columbus altimeter setting. When local altimeter setting not received, use Columbus altimeter setting and increase all MDA 120 feet and LNAV Cats C/D visibility $\frac{3}{8}$ SM, Circling Cat C visibility $\frac{1}{4}$ SM, and Circling Cat D visibility $\frac{1}{2}$ SM.

MISSED APPROACH: Climb to 1300 then climbing right turn to 3000 direct RIVME and hold.

AWOS-3PT 132.575	ATLANTA APP CON ★ 125.5 323.1	AUBURN TOWER ★ 123.875	GND CON 121.625	CLNC DEL 118.7 (When twr closed)	UNICOM 123.0 (CTAF) 0
---------------------	----------------------------------	---------------------------	--------------------	--	---------------------------------



1300	3000	RIVME	VGSI and RNAV glidepath not coincident (VGSI Angle 3.00/TCH 22).	4 NM Holding Pattern
RW29 1.4 NM to RW29 3.6 NM 6.8 NM				
TMALL	2400	111° 291° 2600		
3.00° TCH 45°				
CATEGORY	A	B	C	D
LNAV MDA	1240-1	470 (500-1)	1240-1 $\frac{3}{8}$	470 (500-1 $\frac{3}{8}$)
CIRCLING	1280-1 503 (600-1)	1360-1 583 (600-1)	1380-1 $\frac{3}{4}$ 603 (700-1 $\frac{3}{4}$)	1480-2 $\frac{1}{4}$ 703 (800-2 $\frac{1}{4}$)

AUBURN, ALABAMA
Amdt 1C 10NOV16

32°37'N-85°26'W

AUBURN UNIVERSITY RGNL (AUO)
RNAV (GPS) RWY 29

AUBURN, ALABAMA

AL-5127 (FAA)

25219

APP CRS	Rwy Ldg	3703
291°	TDZE	770
	Apt Elev	777

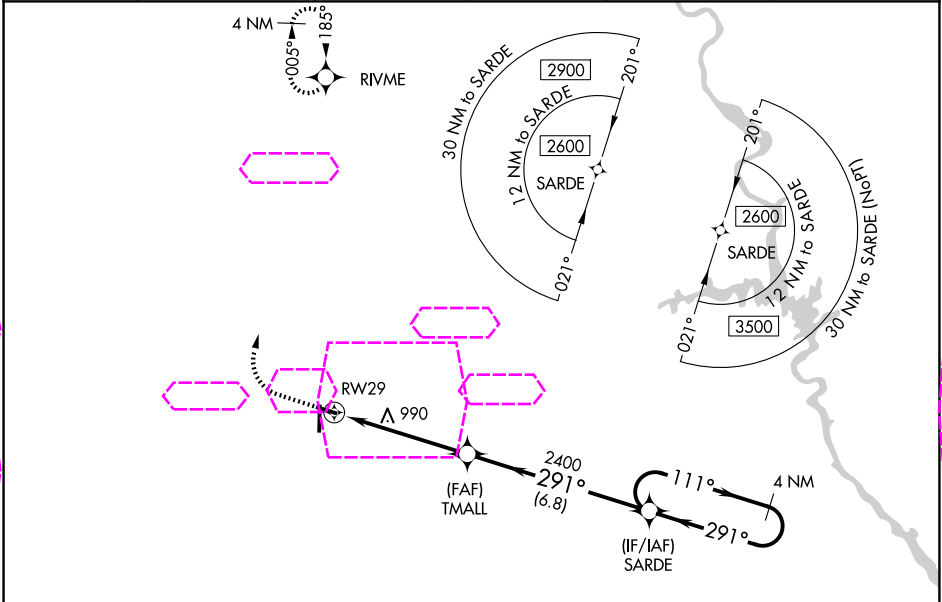
RNAV (GPS) RWY 29

AUBURN UNIVERSITY RGNL (AUO)

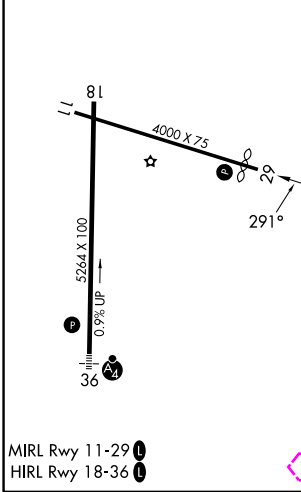
⚠ DME/DME RNP-0.3 NA. VDP NA when using Columbus altimeter setting. When local altimeter setting not received, use Columbus altimeter setting and increase all MDA 120 feet and LNAV Cats C/D visibility $\frac{3}{8}$ SM, Circling Cat C visibility $\frac{1}{4}$ SM, and Circling Cat D visibility $\frac{1}{2}$ SM.

MISSED APPROACH: Climb to 1300 then climbing right turn to 3000 direct RIVME and hold.

AWOS-3PT 132.575	ATLANTA APP CON ★ 125.5 323.1	AUBURN TOWER ★ 123.875	GND CON 121.625	CLNC DEL 118.7 (When twr closed)	UNICOM 123.0 (CTAF) 0
----------------------------	---	----------------------------------	---------------------------	---	--



ELEV 777	TDZE 770
----------	----------



1300	3000	RIVME	VGSI and RNAV glidepath not coincident (VGSI Angle 3.00/TCH 22).		4 NM Holding Pattern
1.4 NM to RWY 29		TMALL	2400	291°	111°
1.4 NM		3.6 NM	6.8 NM	291°	2600
CATEGORY	A	B	C	D	
LNAV MDA	1240-1	470 (500-1)	1240-1 $\frac{3}{8}$	470 (500-1 $\frac{3}{8}$)	
CIRCLING	1280-1 503 (600-1)	1360-1 583 (600-1)	1380-1 $\frac{3}{4}$ 603 (700-1 $\frac{3}{4}$)	1480-2 $\frac{1}{4}$ 703 (800-2 $\frac{1}{4}$)	

AUBURN, ALABAMA
Amdt 1C 10NOV16

32°37'N-85°26'W

AUBURN UNIVERSITY RGNL (AUO)
RNAV (GPS) RWY 29

SE-4, 07 AUG 2025 to 04 SEP 2025

SE-4, 07 AUG 2025 to 04 SEP 2025