

AUBURN, ALABAMA

AL-5127 (FAA)

25163

WAAS CH 78029 W18A	APP CRS 185°	Rwy Ldg TDZE 777 Apt Elev 777
--	------------------------	---

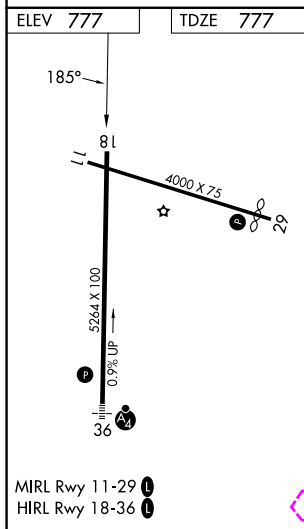
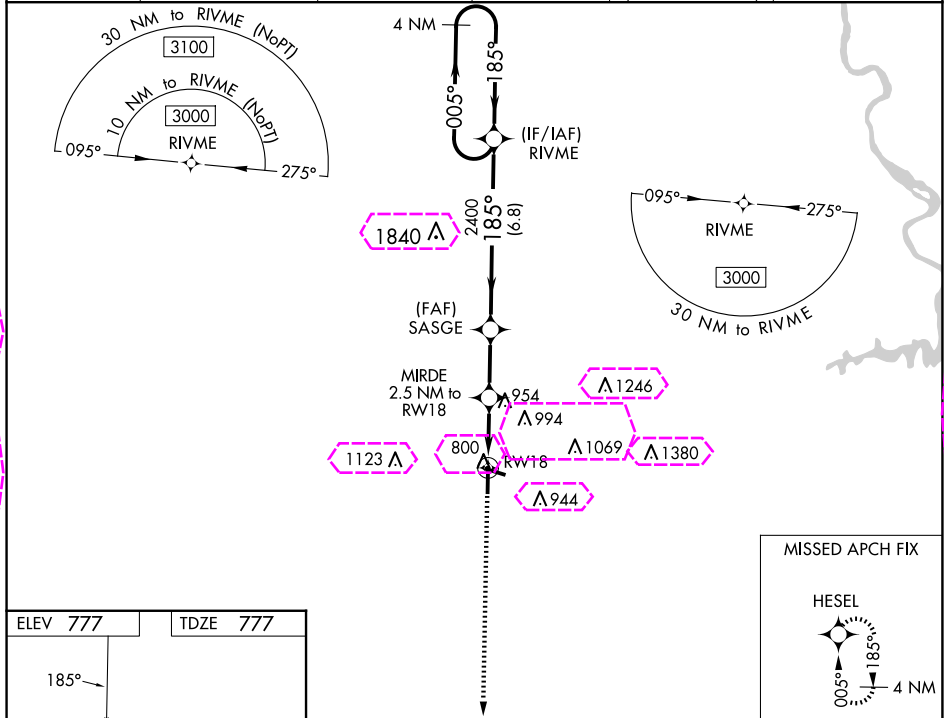
RNAV (GPS) RWY 18

AUBURN UNIVERSITY RGNL (AUO)

▼ For uncompensated Baro-VNAV systems, LNAV/VNAV NA below -16°C (4°F) or above 54°C (130°F).
▲ Baro-VNAV and VDP NA when using Columbus altimeter setting. DME/DME RNP-0.3 NA. Rwy 18 helicopter visibility reduction below $\frac{3}{4}$ SM not authorized. When local altimeter setting not received, use Columbus altimeter setting: increase LPV DA to 1140 feet and visibility all Cats $\frac{1}{2}$ SM; increase LNAV/VNAV DA to 1164 feet and visibility all Cats $\frac{3}{8}$ SM; increase all MDA 120 feet and LNAV Cats C/D visibility $\frac{3}{8}$ SM, Circling Cat C visibility $\frac{1}{4}$ SM, and circling Cat D visibility $\frac{1}{2}$ SM.

MISSED APPROACH:
Climb to 3000 direct
HESEL and hold.

AWOS-3PT 132.575	ATLANTA APP CON * 125.5 323.1	AUBURN TOWER * 123.875	GND CON 121.625	CLNC DEL 118.7 (When twr closed)	UNICOM 123.0 (CTAF) 0
----------------------------	---	----------------------------------	---------------------------	---	--



3000	HESEL	MIRDE 2.5 NM to RW18	SASGE 2400	RIVME 4 NM Holding Pattern
*LNAV only	*1.4 NM to RW18	1620*	2400	GP 3.00° TCH 50
1.4 NM	1.1 NM	2.4 NM	6.8 NM	
CATEGORY	A	B	C	D
LPV DA	1027- $\frac{3}{4}$	250 (300- $\frac{3}{4}$)		
LNAV/VNAV DA	1051- $\frac{7}{8}$	274 (300- $\frac{7}{8}$)		
LNAV MDA	1260-1	483 (500-1)	1260-1 $\frac{3}{8}$	483 (500-1 $\frac{3}{8}$)
CIRCLING	1280-1 503 (600-1)	1360-1 583 (600-1)	1380-1 $\frac{3}{4}$ 603 (700-1 $\frac{3}{4}$)	1480-2 $\frac{1}{4}$ 703 (800-2 $\frac{1}{4}$)

AUBURN, ALABAMA
Amdt 2 10NOV16

32°37'N-85°26'W

AUBURN UNIVERSITY RGNL (AUO)
RNAV (GPS) RWY 18

AUBURN, ALABAMA

AL-5127 (FAA)

25219

WAAS CH 78029 W18A	APP CRS 185°	Rwy Ldg TDZE 777 Apt Elev 777
--	------------------------	---

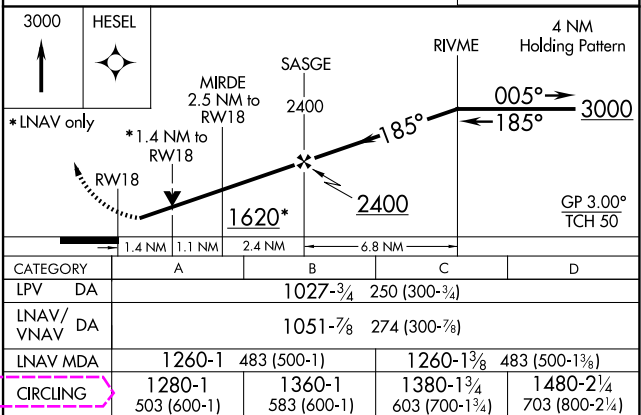
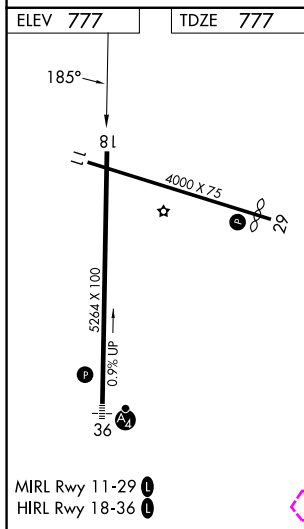
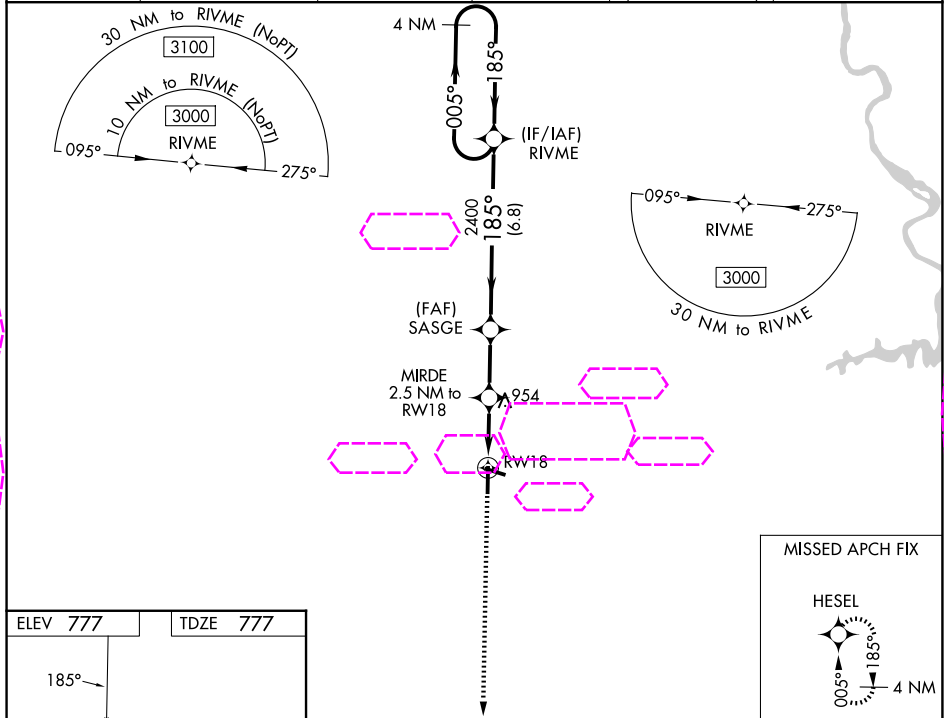
RNAV (GPS) RWY 18

AUBURN UNIVERSITY RGNL (AUO)

▼ For uncompensated Baro-VNAV systems, LNAV/VNAV NA below -16°C (4°F) or above 54°C (130°F).
▲ Baro-VNAV and VDP NA when using Columbus altimeter setting. DME/DME RNP-0.3 NA. Rwy 18 helicopter visibility reduction below 3/4 SM not authorized. When local altimeter setting not received, use Columbus altimeter setting: increase LPV DA to 1140 feet and visibility all Cats 1/2 SM; increase LNAV/VNAV DA to 1164 feet and visibility all Cats 3/8 SM; increase all MDA 120 feet and LNAV Cats C/D visibility 3/8 SM, Circling Cat C visibility 1/4 SM, and circling Cat D visibility 1/2 SM.

MISSED APPROACH:
Climb to 3000 direct
HESEL and hold.

AWOS-3PT 132.575	ATLANTA APP CON ★ 125.5 323.1	AUBURN TOWER ★ 123.875	GND CON 121.625	CLNC DEL 118.7 (When twr closed)	UNICOM 123.0 (CTAF) 0
----------------------------	---	----------------------------------	---------------------------	---	--



AUBURN, ALABAMA
Amdt 2 10NOV16

32°37'N-85°26'W

AUBURN UNIVERSITY RGNL (AUO)
RNAV (GPS) RWY 18

SE-4, 07 AUG 2025 to 04 SEP 2025

SE-4, 07 AUG 2025 to 04 SEP 2025