

AUBURN, ALABAMA

AL-5127 (FAA)

25163

WAAS CH 63139 W11A	APP CRS 111°	Rwy Ldg TDZE Apt Elev 777
--	------------------------	--

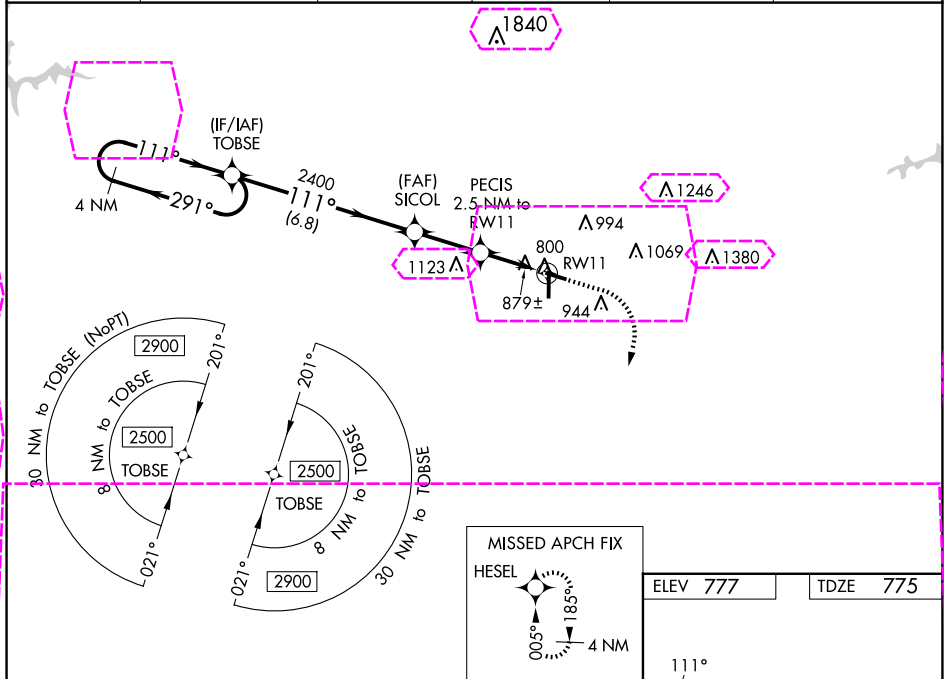
RNAV (GPS) RWY 11

AUBURN UNIVERSITY RGNL (AUO)

For uncompensated Baro-VNAV systems, LNAV/VNAV NA below -16°C (4°F) or above 54°C (130°F). Baro-VNAV and VDP NA when using Columbus altimeter setting. DME/DME RNP-0.3 NA. When local altimeter setting not received, use Columbus altimeter setting: increase LPV DA to 1138 feet and visibility all Cats ¼ SM; increase LNAV/VNAV DA to 1173 feet and visibility all Cats ⅓ SM; increase all MDA 120 feet and LNAV Cats C/D and Circling Cat C visibility ¼ SM and Circling Cat D visibility ½ SM.

MISSED APPROACH:
Climb to 1200 then climbing right turn to 3000 direct HESEL and hold.

AWOS-3PT 132.575	ATLANTA APP CON ★ 125.5 323.1	AUBURN TOWER ★ 123.875	GND CON 121.625	CLNC DEL 118.7 (When twr closed)	UNICOM 123.0 (CTAF) 0
----------------------------	---	----------------------------------	---------------------------	---	--



4 NM Holding Pattern TOBSE		SICOL		PECIS 2.5 NM to RW11		*1.1 NM to RW11	
2500 ← 291°		2400		2400		1600	
GP 3.00° TCH 45		6.8 NM		2.5 NM		1.4 NM	
111°		111°		111°		111°	
A		B		C		D	
LPV DA		1025-1		250 (300-1)			
LNAV/VNAV DA		1060-1		285 (300-1)			
LNAV MDA		1160-1 385 (400-1)		1160-1 385 (400-1 ½)			
CIRCLING		1280-1 503 (600-1)		1360-1 583 (600-1)		1380-1 603 (700-1 ¾)	
						1480-2 703 (800-2 ¼)	

AUBURN, ALABAMA
Amdt 2A 02FEB17

32°37'N-85°26'W

AUBURN UNIVERSITY RGNL (AUO)
RNAV (GPS) RWY 11

MIRL Rwy 11-29 **0**
HIRL Rwy 18-36 **0**

AUBURN, ALABAMA

AL-5127 (FAA)

25219

WAAS CH 63139 W11A	APP CRS 111°	Rwy Ldg TDZE Apt Elev 777
--	------------------------	--

RNAV (GPS) RWY 11

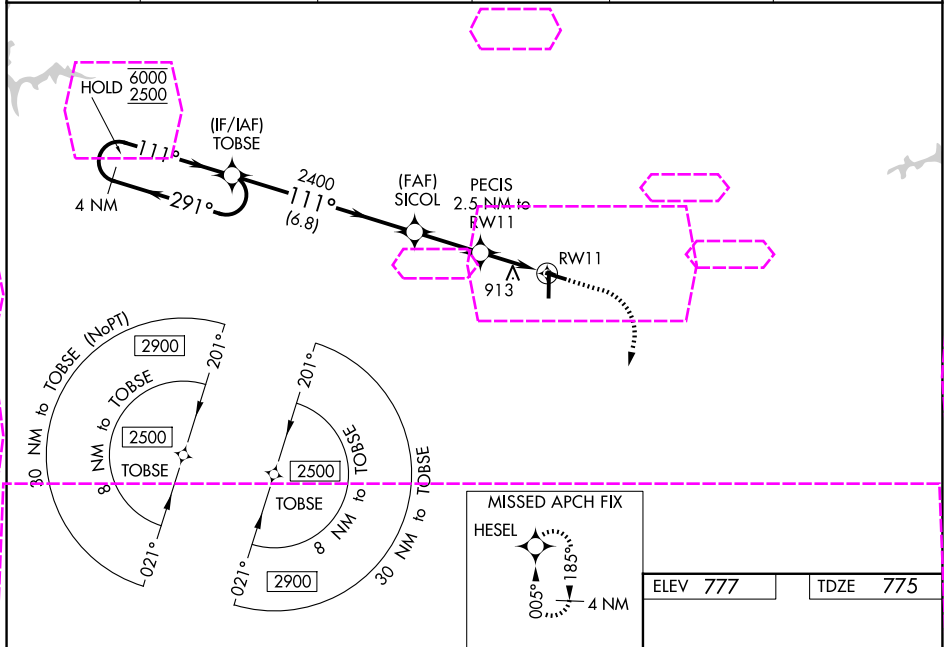
AUBURN UNIVERSITY RGNL (AUO)

RNP APCH - GPS.

Baro-VNAV and VDP NA when using CSG altimeter setting. For uncompensated Baro-VNAV systems, LNAV/VNAV NA below -16°C or above 54°C. Circling Rwy 29 NA at night. When local altimeter setting not received, use CSG altimeter setting: increase LPV DA to 1139 feet; increase LNAV/VNAV DA to 1334 feet and all visibilities ¼ SM. Increase all MDAs 120 feet and LNAV visibility Cats C/D ¼ SM and Circling Cat C/D visibility ½ SM.

MISSED APPROACH:
Climb to 1300 then climbing right turn to 3000 direct HESEL and hold.

AWOS-3PT 132.575	ATLANTA APP CON ★ 125.5 323.1	AUBURN TOWER ★ 123.875	GND CON ★ 121.625	CLNC DEL 118.7 (When twr closed)	UNICOM 123.0 (CTAF) 0
----------------------------	---	----------------------------------	-----------------------------	---	--



4 NM Holding Pattern		MISSED APCH FIX HESEL 005° 185° 4 NM		ELEV 777	TDZE 775
GP 3.00° TCH 45°		1300 3000 HESEL		111° 81 4000 X 75 29	
TOBSE		SICOL		PECIS	
6000 2500		2400		2.5 NM to RW11	
291° 111°		171°		1.3 NM to RW11	
2400		1600		RW11	
6.8 NM		2.5 NM		1.3 NM	
CATEGORY	A	B	C	D	
LPV DA	1025-1		250 (300-1)		
LNAV/VNAV DA	1220-1 3/8		445 (500-1 3/8)		
LNAV MDA	1220-1 3/8		445 (500-1 3/8)		
CIRCLING	1280-1 503 (600-1)	1360-1 583 (600-1)	1380-1 3/8 603 (700-1 3/8)	1440-2 663 (800-2)	HIRL Rwy 18-36 0 MIRL Rwy 11-29 0

AUBURN, ALABAMA
Amdt 3 07AUG25

32°37'N-85°26'W

AUBURN UNIVERSITY RGNL (AUO)
RNAV (GPS) RWY 11