

HAWTHORNE, CALIFORNIA

AL-5120 (FAA)

24137

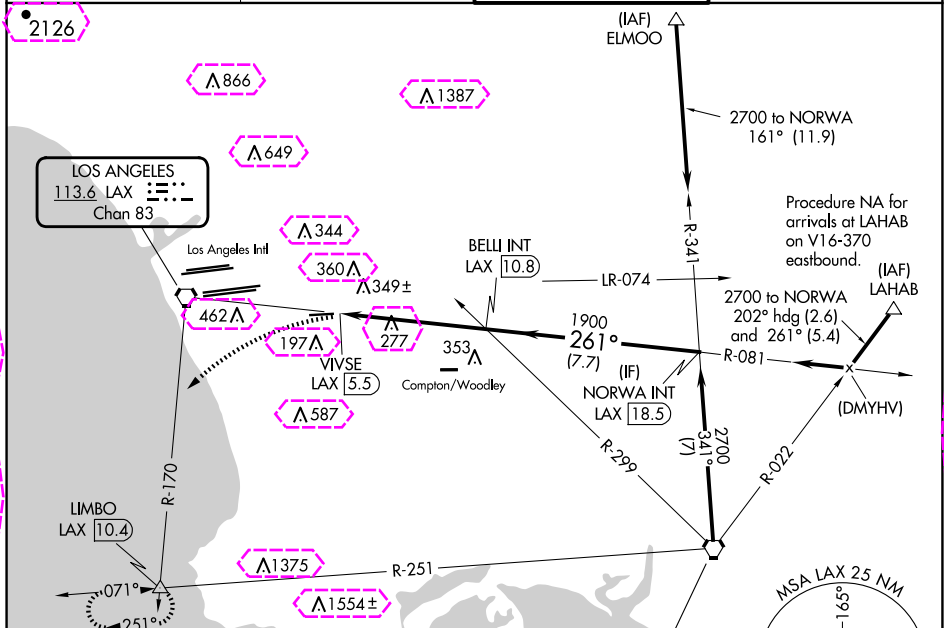
VORTAC LAX	APP CRS	Rwy Idg	4194
113.6	261°	TDZE	63
Chan 83		Apt Elev	66

VOR RWY 25

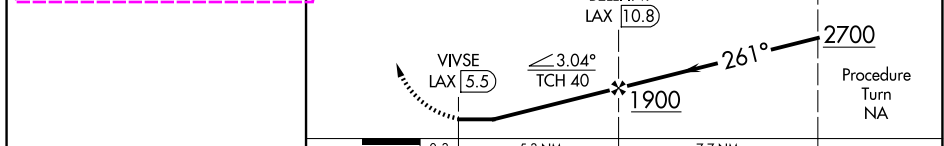
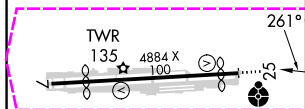
JACK NORTHROP FLD/HAWTHORNE MUNI (HHR)

<p>⚠ Circling NA north of Rwy 7-25. Rwy 25 helicopter visibility reduction below 1 SM NA. When local altimeter setting not received, use Los Angeles Intl altimeter setting. Circling Rwy 7 NA at night. Inop table does not apply to S-25 Cats A and B. For inop ALS, increase S-25 Cats C/D visibility to 1½.</p>	<p>ODALS</p>	<p>MISSED APPROACH: Climbing left turn to 3000 via heading 210° and LAX VORTAC R-170 to LIMBO INT/ LAX 10.4 DME and hold.</p>
---	--------------	---

ATIS 118.4	SOCAL APP CON 124.9 269.0	HAWTHORNE TOWER ★ 121.1 (CTAF) 0 257.8	GND CON 125.1
---------------	------------------------------	---	------------------



ELEV 66	TDZE 63
---------	---------



MIRL Rwy 7-25	FAF to MAP 5.3 NM	LAX R-170	LIMBO	VGS1 and descent angles not coincident (VGS1 Angle 3.50/TCH 26).	NORWA INT LAX 18.5
Category	A	B	C	D	
S-25	620-1	557 (600-1)	620-1 3/8	557 (600-1 3/8)	
Ⓢ CIRCLING	620-1	554 (600-1)	780-2	780-2 1/4	
			714 (800-2)	714 (800-2 1/4)	

HAWTHORNE, CALIFORNIA

Amdt 16B 24MAR22

JACK NORTHROP FLD/HAWTHORNE MUNI (HHR)

33°55'N-118°20'W

VOR RWY 25

SW-3, 10 JUL 2025 to 07 AUG 2025

SW-3, 10 JUL 2025 to 07 AUG 2025

VOR RWY 25