

HAWTHORNE, CALIFORNIA

AL-5120 (FAA)

24137

WAAS CH 65825 W25A	APP CRS 253°	Rwy Idg TDZE 63 Apt Elev 66
--	------------------------	---

RNAV (GPS) RWY 25

JACK NORTHROP FLD/HAWTHORNE MUNI (HHR)

RNP APCH - GPS.

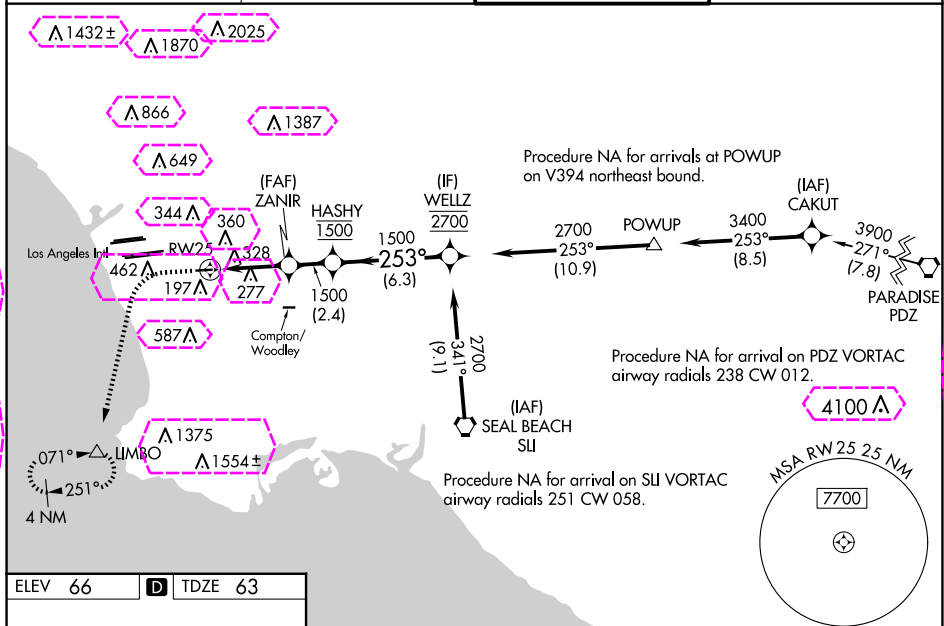
⚠ Circling NA north of Rwy 7-25. Rwy 25 helicopter visibility reduction below 1 SM NA. For uncompensated Baro-VNAV systems, LNAV/VNAV NA below 5°C or above 54°C. Inop table does not apply. Simultaneous approach authorized. LNAV procedure NA during simultaneous operations. Use of FD or AP required during simultaneous operations. Circling Rwy 7 NA at night.

ODALS



MISSED APPROACH: Climb to 800 then climbing left turn to 3000 direct LIMBO and hold, continue climb-in-hold to 3000.

ATIS 118.4	SOCAL APP CON 124.9 269.0	HAWTHORNE TOWER ★ 121.1 (CTAF) 0 257.8	GND CON 125.1
----------------------	-------------------------------------	--	-------------------------



800 ↑		3000 ↷		LIMBO △		VGSI and RNAV glidepath not coincident (VGSI Angle 3.50/TCH 26).									
						ZANIR 1500		HASHY 1500							
						RW25		253°							
						1500		1500							
								WELLZ 2700							
								GP 3.07° TCH 59							
						4.2 NM		2.4 NM							
								6.3 NM							
CATEGORY		A		B		C		D							
LPV	DA	577-1 $\frac{3}{8}$ 514 (600-1 $\frac{3}{8}$)													
LNAV/ VNAV	DA	580-1 $\frac{3}{8}$ 517 (600-1 $\frac{3}{8}$)													
LNAV	MDA	580-1 517 (600-1)				580-1 $\frac{3}{8}$ 517 (600-1 $\frac{3}{8}$)									
C CIRCLING		620-1 554 (600-1)				780-2 714 (800-2)		780-2 $\frac{1}{4}$ 714 (800-2 $\frac{1}{4}$)							

MIRL Rwy 7-25

MIRL Rwy 7-25 0

HAWTHORNE, CALIFORNIA

Amdt 3 03NOV22

JACK NORTHROP FLD/HAWTHORNE MUNI (HHR)

33°55'N-118°20'W

RNAV (GPS) RWY 25

SW-3, 10 JUL 2025 to 07 AUG 2025

SW-3, 10 JUL 2025 to 07 AUG 2025

WAAS CH 65825 W25A	APP CRS 253°	Rwy Ldg 4194 TDZE 63 Apt Elev 66
--	------------------------	---

RNAV (GPS) RWY 25

RNP APCH - GPS.

V Circling NA north of Rwy 7-25. Rwy 25 helicopter visibility reduction below 1 SM NA. For uncompensated Baro-VNAV systems, LNAV/VNAV NA below 5°C or above 54°C. Inop table does not apply. Simultaneous approach authorized. LNAV procedure NA during simultaneous operations. Use of FD or AP required during simultaneous operations. Circling Rwy 7 NA at night.

ODALS



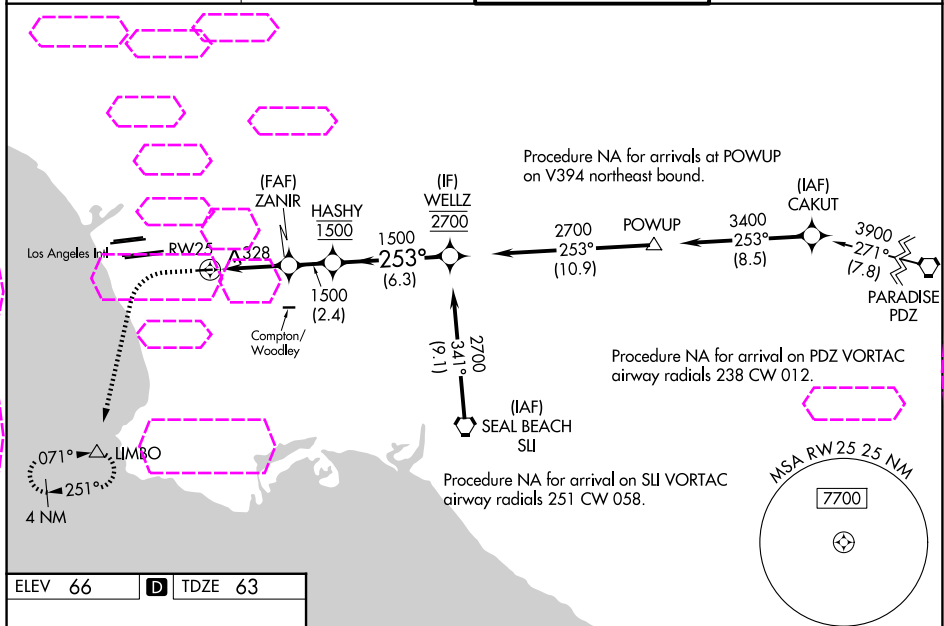
MISSED APPROACH: Climb to 800 then climbing left turn to 3000 direct LIMBO and hold, continue climb-in-hold to 3000.

ATIS
118.4

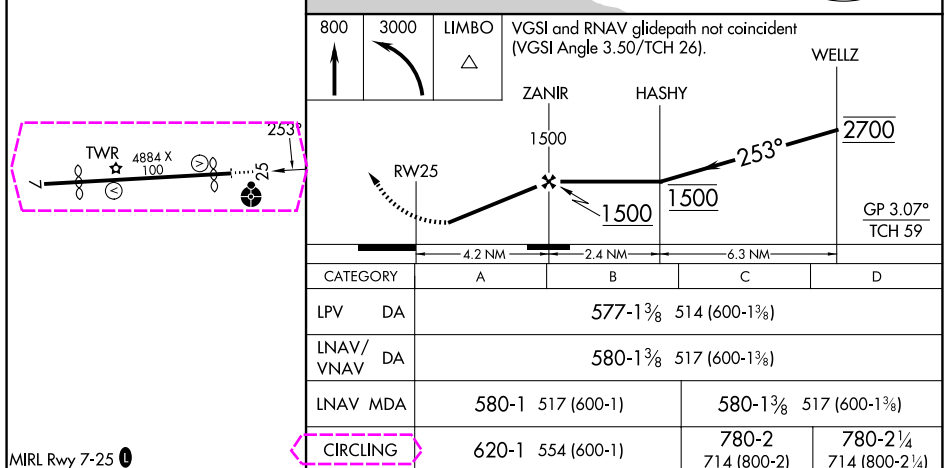
SOCAL APP CON
124.9 269.0

HAWTHORNE TOWER ★
121.1 (CTAF) **L** 257.8

GND CON
125.1



ELEV 66	D	TDZE 63
---------	----------	---------



HAWTHORNE, CALIFORNIA
Amdt 3 03NOV22

JACK NORTHROP FLD/HAWTHORNE MUNI (HHR)
33°55'N-118°20'W **RNAV (GPS) RWY 25**