

HAWTHORNE, CALIFORNIA

AL-5120 (FAA)

25219

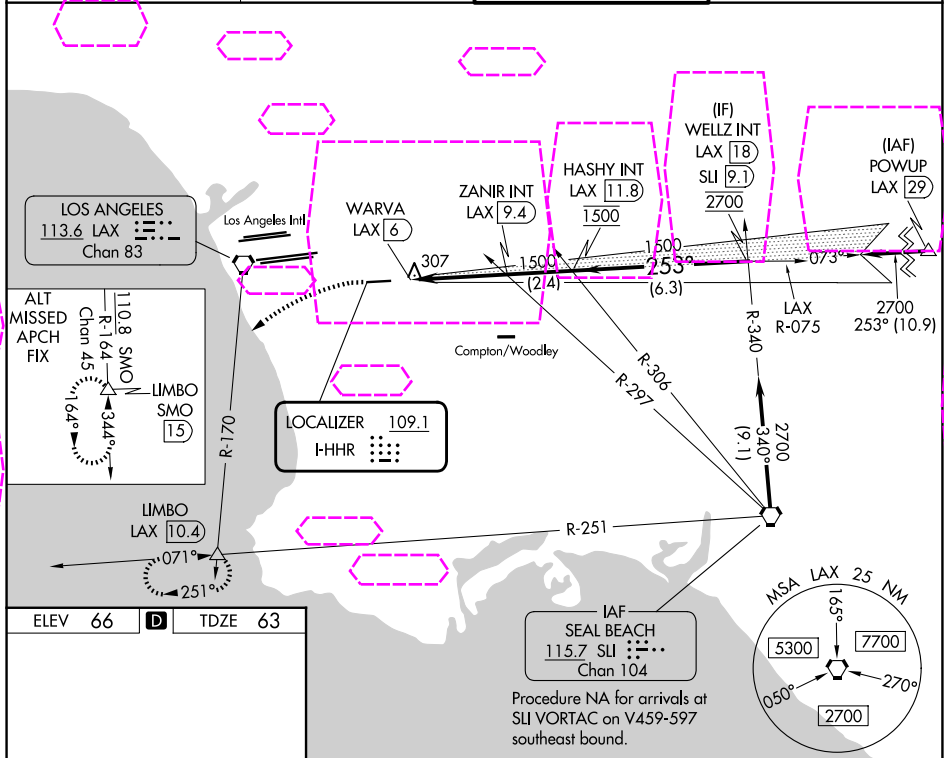
LOC I-HHR	APP CRS	Rwy Ldg	4194
109.1	253°	TDZE	63
		Apt Elev	66

LOC RWY 25

JACK NORTHROP FLD/HAWTHORNE MUNI (HHR)

<p>⚠ Inop table does not apply. Rwy 25 helicopter visibility reduction below 1 SM NA. Circling Rwy 7 NA at night. When local altimeter setting not received, use Los Angeles Intl altimeter setting. Simultaneous approach authorized with LAX 25L/R 24L/R. Circling NA north of Rwy 7-25. DME from LAX VORTAC. Simultaneous reception of I-HHR and LAX DME required.</p>	<p>ODALS</p>	<p>MISSED APPROACH: Climbing left turn to 3000 on heading 210° and LAX VORTAC R-170 to LIMBO INT/LAX 10.4 DME and hold.</p>
---	--------------	---

ATIS 118.4	SOCAL APP CON 124.9 269.0	HAWTHORNE TOWER ★ 121.1(CTAF) 0 257.8	GND CON 125.1
---------------	------------------------------	--	------------------



ELEV 66 D TDZE 63		TWR 4884 X 100		3000 hdg 210°		LAX R-170		LIMBO		VGSI and descent angles not coincident (VGSI Angle 3.50/TCH 26).		WELLY INT LAX 18	
MIRL Rwy 7-25		LOC unusable from MAP inbound.		WARVA LAX 6		ZANIR INT LAX 9.4		HASHY INT LAX 11.8		2700			
FAF to MAP 3.4 NM		0.8 NM		3.4 NM		2.4 NM		6.3 NM					
CATEGORY		A		B		C		D					
S-25		580-1		517 (600-1)		580-1 3/8		517 (600-1 3/8)					
Knots		60		90		120		150		180			
Min:Sec		3:24		2:16		1:42		1:22		1:08			
CIRCLING		620-1		554 (600-1)		780-2		714 (800-2)		780-2 1/4		714 (800-2 1/4)	

HAWTHORNE, CALIFORNIA
Amdt 12C 27 JAN22

JACK NORTHROP FLD/HAWTHORNE MUNI (HHR)
33°55'N-118°20'W

LOC RWY 25

SW-3, 07 AUG 2025 to 04 SEP 2025

SW-3, 07 AUG 2025 to 04 SEP 2025