

LAKE CHARLES, LOUISIANA

AL-5111 (FAA)

22363

WAAS CH 45502 W15A	APP CRS 154°	Rwy Idg 10702 TDZE 16 Apt Elev 17
--	------------------------	--

RNAV (GPS) RWY 15

CHENNAULT INTL (CWF')

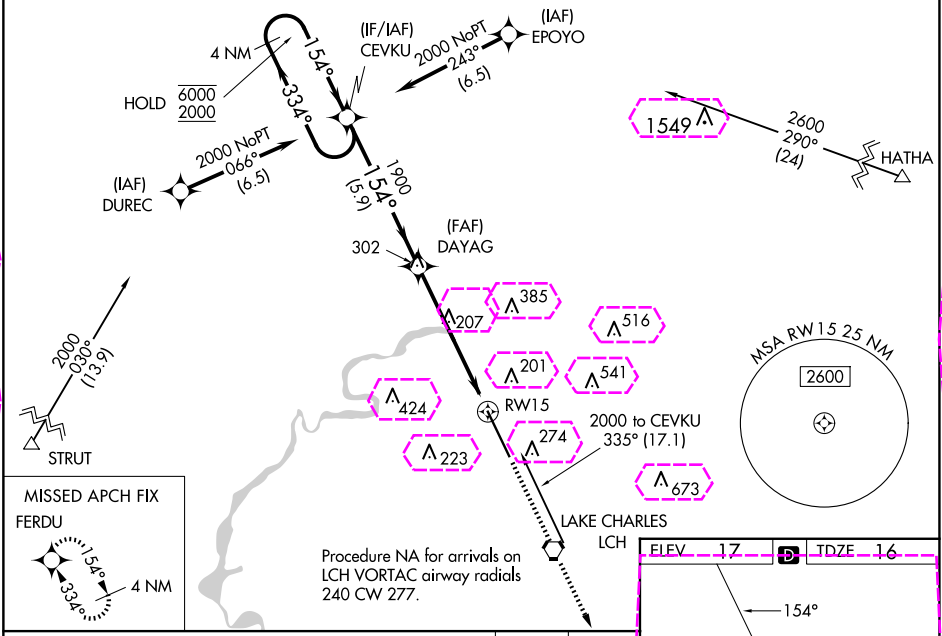
RNP APCH - GPS

Baro-VNAV and VDP NA when using Lake Charles Rgnl altimeter setting. For uncompensated Baro-VNAV systems, procedure NA below -1.5°C or above 54°C. When local altimeter setting not received, use Lake Charles Rgnl altimeter ASR setting and increase LPV DA to 232 feet; increase LNAV/VNAV DA to 523 feet; increase all MDAs 20 feet and LNAV visibility Cat C/D ½ SM, and Circling visibility Cat D ¼ SM. For inop ALS, increase LNAV/VNAV all Cats visibility to 1½ SM. For inop ALS when using Lake Charles Rgnl altimeter setting increase LNAV/VNAV visibility all Cats to 1½ SM.

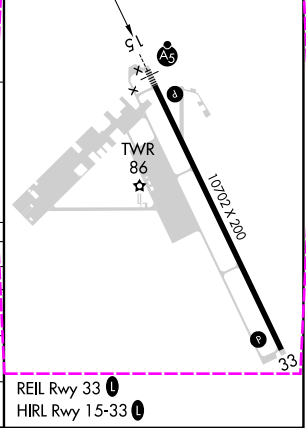
MALSR

MISSED APPROACH: Climb to 2000 direct FERDU and hold.

ATIS 120.0	LAKE CHARLES APP CON* 119.8 282.3	CHENNAULT TOWER* 124.2 (CTAF) 0 290.4	GND CON 121.65 275.8	UNICOM 122.95
----------------------	---	---	--------------------------------	-------------------------



4 NM Holding Pattern		CEVKU		DAYAG		2000 ↑		FERDU ✦		
6000 ← 334° 2000 → 154°				1900		1.2 NM to RW15				
GP 3.00° TCH 55				1900						
		5.9 NM		4.6 NM		1.2 NM				
CATEGORY	A	B		C		D				
LPV DA	216-½		200 (200-½)							
LNAV/ VNAV DA	507-1		491 (500-1)							
LNAV MDA	460-½	444 (500-½)		460-¾		444 (500-¾)				
CIRCLING	640-1	623 (700-1)		640-1¾ 623 (700-1¾)		740-2¼ 723 (800-2¼)				



LAKE CHARLES, LOUISIANA

AL-5111 (FAA)

25219

WAAS CH 45502 W15A	APP CRS 154°	Rwy Ldg 10702 TDZE 16 Apt Elev 17
--	------------------------	--

RNAV (GPS) RWY 15

CHENNAULT INTL (CWF')

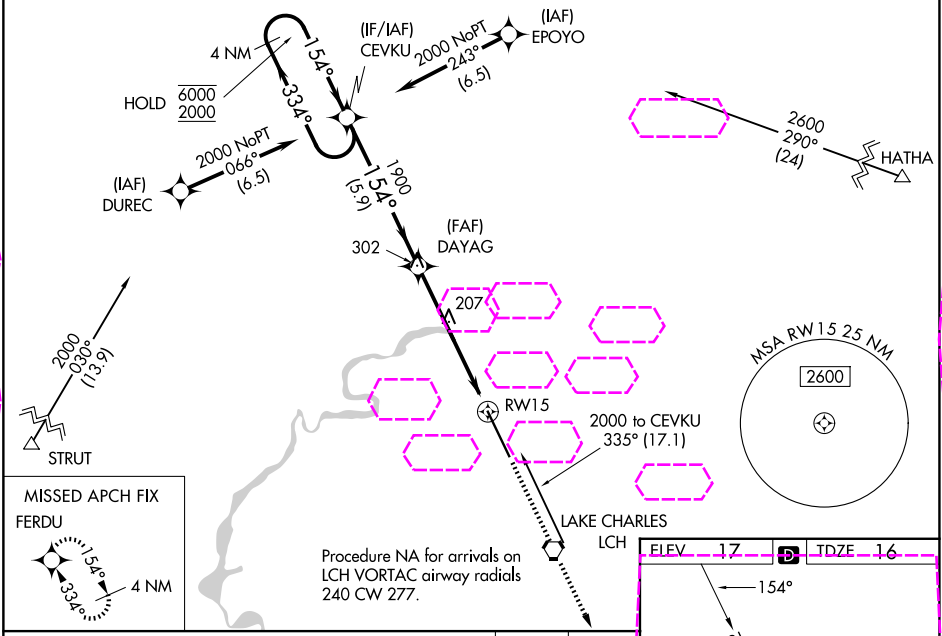
RNP APCH - GPS

Baro-VNAV and VDP NA when using Lake Charles Rgnl altimeter setting. For uncompensated Baro-VNAV systems, procedure NA below -1.5°C or above 54°C. When local altimeter setting not received, use Lake Charles Rgnl altimeter ASR setting and increase LPV DA to 232 feet; increase LNAV/VNAV DA to 523 feet; increase all MDAs 20 feet and LNAV visibility Cat C/D ½ SM, and Circling visibility Cat D ¼ SM. For inop ALS, increase LNAV/VNAV all Cats visibility to 1½ SM. For inop ALS when using Lake Charles Rgnl altimeter setting increase LNAV/VNAV visibility all Cats to 1½ SM.

MALSR

MISSED APPROACH: Climb to 2000 direct FERDU and hold.

ATIS 120.0	LAKE CHARLES APP CON* 119.8 282.3	CHENNAULT TOWER* 124.2 (CTAF) 0 290.4	GND CON 121.65 275.8	UNICOM 122.95
----------------------	---	---	--------------------------------	-------------------------



4 NM Holding Pattern

CEVKU

DAYAG

1900

1900

1.2 NM to RWY 15

GP 3.00° TCH 55

5.9 NM

4.6 NM

1.2 NM

CATEGORY	A	B	C	D
LPV DA	216-½ 200 (200-½)			
LNAV/VNAV DA	507-1 491 (500-1)			
LNAV MDA	460-½ 444 (500-½)		460-¾ 444 (500-¾)	
CIRCLING	640-1 623 (700-1)		640-1¾ 740-2¼ 623 (700-1¾) 723 (800-2¼)	

