

WAAS CH 69204 W33A	APP CRS 336°	Rwy Idg 5950 TDZE 4316 Apt Elev 4317
--	------------------------	---

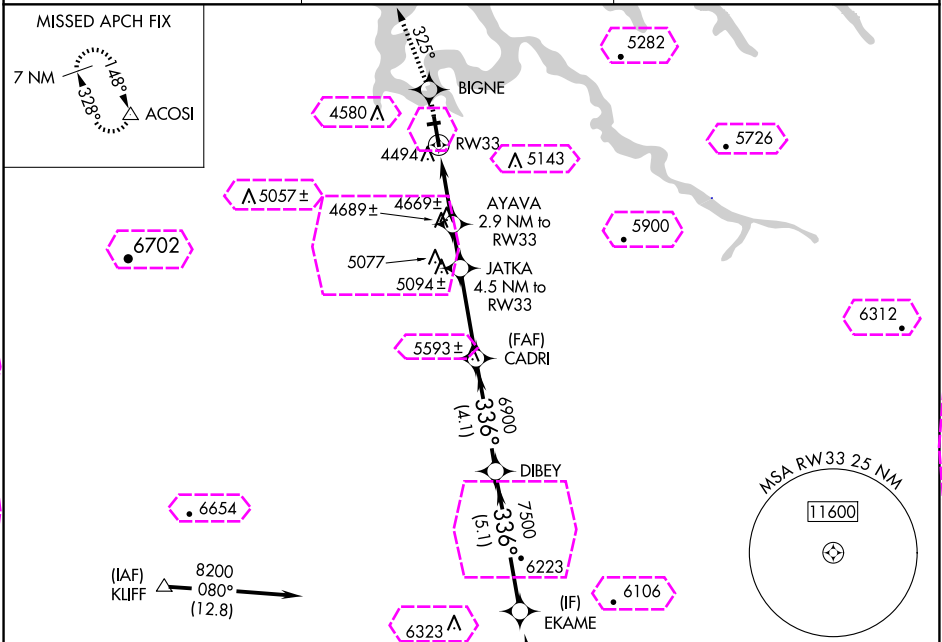
RNAV (GPS) RWY 33

PAGE MUNI (PGA)

For uncompensated Baro-VNAV systems, LNAV/VNAV NA below -23°C (-9°F) or above 41°C (105°F).
DME/DME RNP-0.3 NA. Circling NA to Rwy 7-25.

MISSED APPROACH: Climb to 8500 direct BIGNE and via 325° track to ACOSI and hold, continue climb-in-hold to 8500.

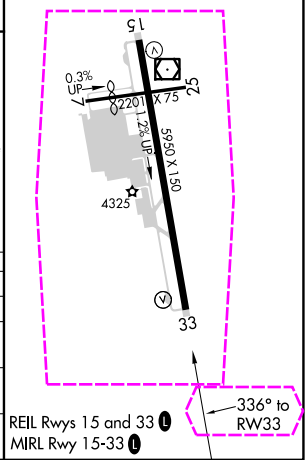
ASOS 120.625	DENVER CENTER 127.55 256.875	UNICOM 122.8 (CTAF) 0
------------------------	--	---------------------------------



ELEV 4317	TDZE 4316
-----------	-----------

Procedure NA for arrivals at CELAY via V208 southbound.

8500	BIGNE	ACOSI	VGSI and RNAV glidepath not coincident (VGSI Angle 3.00/TCH 30).	EKAME
325° tr				
JATKA 4.5 NM to RW33	CADRI	DIBEY		
*LNAV only.	AYAVA 2.9 NM to RW33			
*1.8 NM to RW33				
5280	5800	6900	7500	8200
1.8 NM	1.1 NM	1.6 NM	3.3 NM	4.1 NM
5.1 NM				
CATEGORY	A	B	C	D
LPV DA	4566-1 250 (300-1)			
LNAV/VNAV DA	4744-1½ 428 (500-1½)			
LNAV MDA	4920-1 604 (700-1)	4920-1¾ 604 (700-1¾)		4920-2 604 (700-2)
CIRCLING	4920-1 603 (700-1)	5080-2¼ 763 (800-2¼)		5360-3 1043 (1100-3)



WAAS CH 69204 W33A	APP CRS 336°	Rwy Ldg 5950 TDZE 4316 Apt Elev 4317
--	------------------------	---

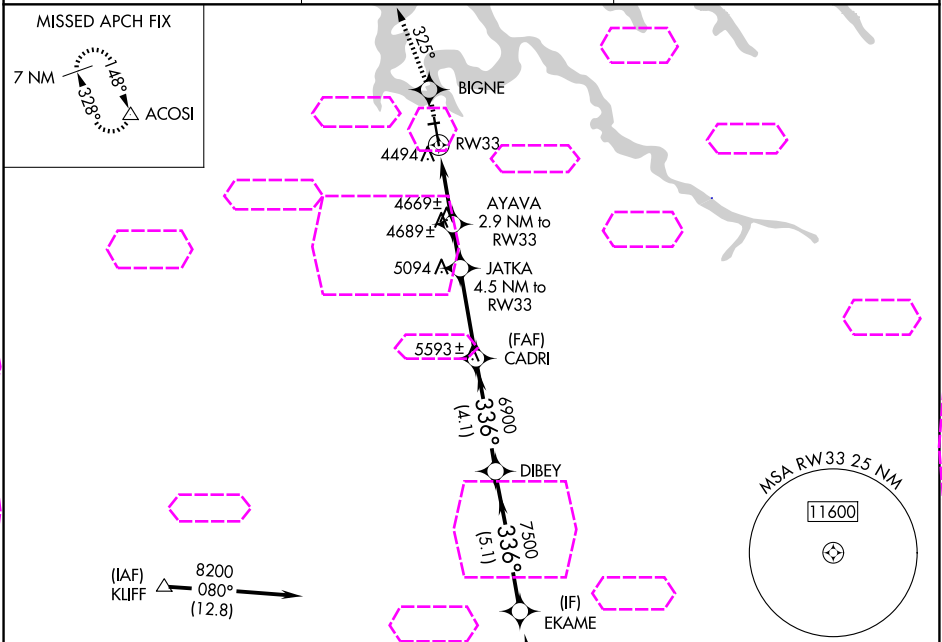
RNAV (GPS) RWY 33

PAGE MUNI (PGA)

▼ For uncompensated Baro-VNAV systems, LNAV/VNAV NA below -23°C (-9°F) or above 41°C (105°F).
DME/DME RNP-0.3 NA. Circling NA to Rwy 7-25.

MISSED APPROACH: Climb to 8500 direct BIGNE and via 325° track to ACOSI and hold, continue climb-in-hold to 8500.

ASOS 120.625	DENVER CENTER 127.55 256.875	UNICOM 122.8 (CTAF) 0
------------------------	--	---------------------------------



Procedure NA for arrivals at CELAY via V208 southbound.

ELEV 4317	TDZE 4316
-----------	-----------

8500	BIGNE	325° tr	ACOSI	VGSI and RNAV glidepath not coincident (VGSI Angle 3.00/TCH 30).				EKAME
↑	✦		△	JATKA	CADRI	DIBEY	8200	
*LNAV only.		AYAVA		4.5 NM to RW33				Procedure Turn NA GP 3.00° TCH 50
		2.9 NM to RW33						
RW33		RW33		5280	5800	6900	7500	
1.8 NM		1.1 NM		1.6 NM	3.3 NM	4.1 NM	5.1 NM	
CATEGORY	A			B		C	D	
LPV DA				4566-1		250 (300-1)		
LNAV/VNAV DA				4744-1½		428 (500-1½)		
LNAV MDA				4920-1 604 (700-1)		4920-2 604 (700-2)		
CIRCLING				4920-1 603 (700-1)		5080-2¼ 763 (800-2¼)		5360-3 1043 (1100-3)

