

WAAS CH 45604 W15A	APP CRS 156°	Rwy Idg 5950 TDZE 4264 Apt Elev 4317
--	------------------------	---

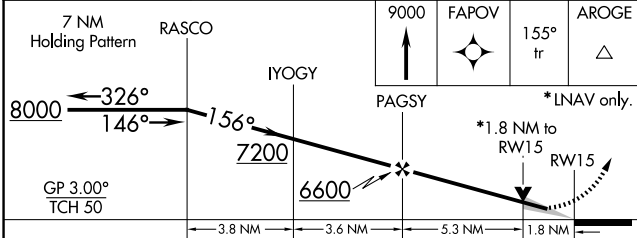
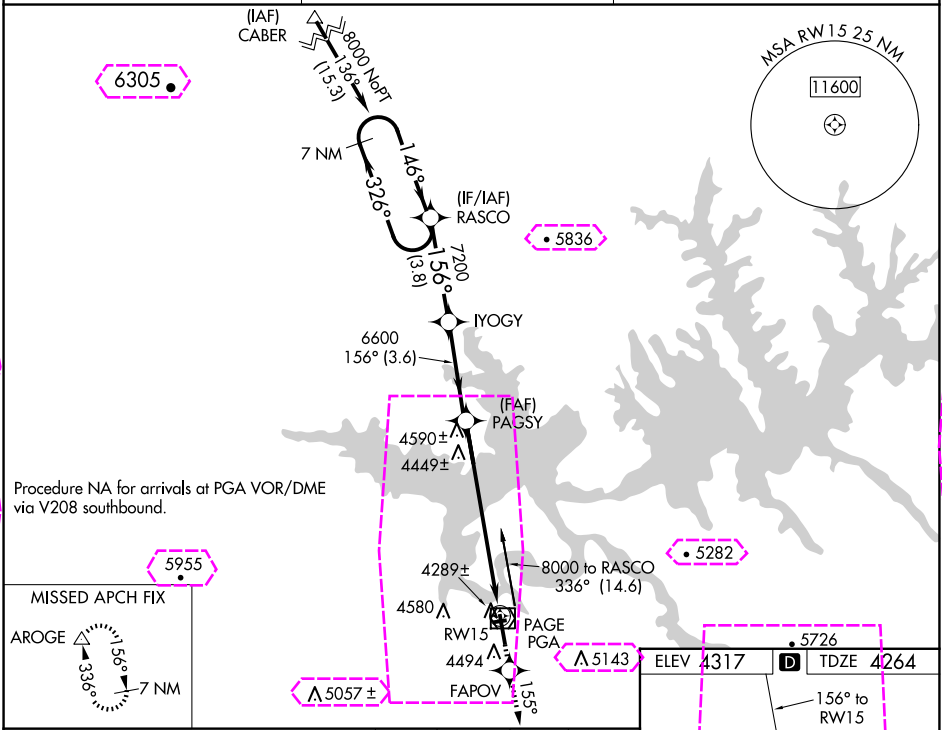
RNAV (GPS) RWY 15

PAGE MUNI (PGA)

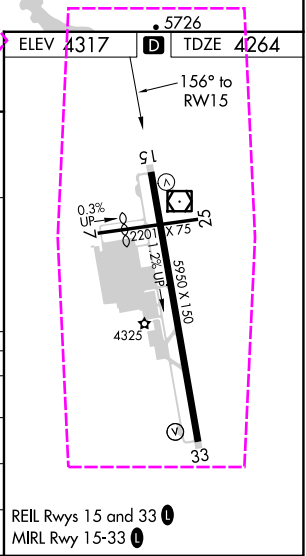
For uncompensated Baro-VNAV systems, LNAV/VNAV NA below -23°C (-9°F) or above 41°C (105°F).
DME/DME RNP-0.3 NA. Circling NA to Rwy 7-25

MISSED APPROACH: Climb to 9000 direct FAPOV and via 155° track to AROGE and hold, continue climb-in-hold to 9000.

ASOS 120.625	DENVER CENTER 127.55 256.875	UNICOM 122.8 (CTAF) 0
------------------------	--	---------------------------------



CATEGORY	A	B	C	D
LPV DA	4599-1¼ 335 (300-1¼)			
LNAV/VNAV DA	4670-1½ 406 (400-1½)			
LNAV MDA	4860-1	596 (600-1)	4860-1½ 596 (600-1½)	4860-1¾ 596 (600-1¾)
CIRCLING	4860-1 543 (600-1)	4880-1 563 (600-1)	5080-2¼ 763 (800-2¼)	5360-3 1043 (1100-3)



SW-4, 10 JUL 2025 to 07 AUG 2025

SW-4, 10 JUL 2025 to 07 AUG 2025

PAGE, ARIZONA

AL-5108 (FAA)

25219

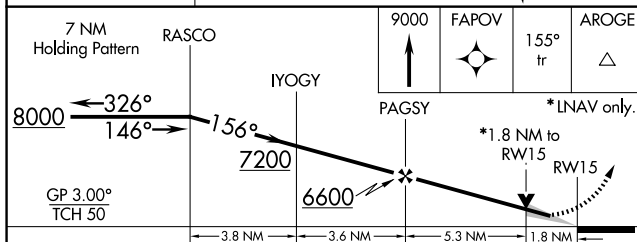
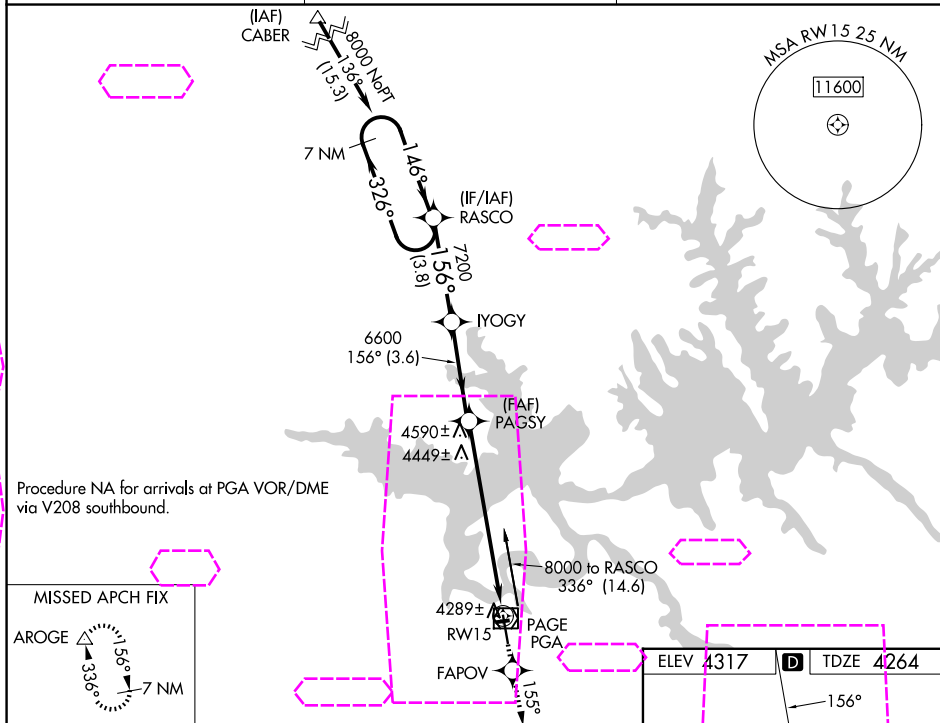
WAAS CH 45604 W15A	APP CRS 156°	Rwy Ldg TDZE 4264 Apt Elev 4317
--	------------------------	---

RNAV (GPS) RWY 15

PAGE MUNI (PGA)

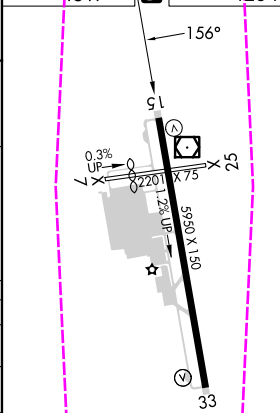
<p>For uncompensated Baro-VNAV systems, LNAV/VNAV NA below -23°C (-9°F) or above 41°C (105°F). DME/DME RNP-0.3 NA. Circling NA to Rwy 7-25</p>	<p>MISSED APPROACH: Climb to 9000 direct FAPOV and via 155° track to AROGE and hold, continue climb-in-hold to 9000.</p>
--	--

ASOS 120.625	DENVER CENTER 127.55 256.875	UNICOM 122.8 (CTAF) 0
------------------------	--	---------------------------------



CATEGORY	A	B	C	D
LPV DA	4599-1¼	335 (300-1¼)		
LNAV/VNAV DA	4670-1½	406 (400-1½)		
LNAV MDA	4860-1 596 (600-1)	4860-1½ 596 (600-1½)	4860-1¾ 596 (600-1¾)	
CIRCLING	4860-1 543 (600-1)	4880-1 563 (600-1)	5080-2¼ 763 (800-2¼)	5360-3 1043 (1100-3)

ELEV 4317 D TDZE 4264



REIL Rws 15 and 33 0

MIRL Rwy 15-33 0

SW-4, 07 AUG 2025 to 04 SEP 2025

SW-4, 07 AUG 2025 to 04 SEP 2025