

CHICAGO/WEST CHICAGO, ILLINOIS

AL-5104 (FAA)

23278

| | | | |
|--|------------------------|---|-------------|
| WAAS CH 45531 W02A | APP CRS 015° | Rwy Idg TDZE 751 Apt Elev 759 | 6451 |
|--|------------------------|---|-------------|

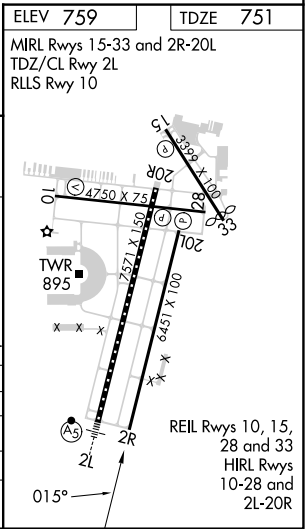
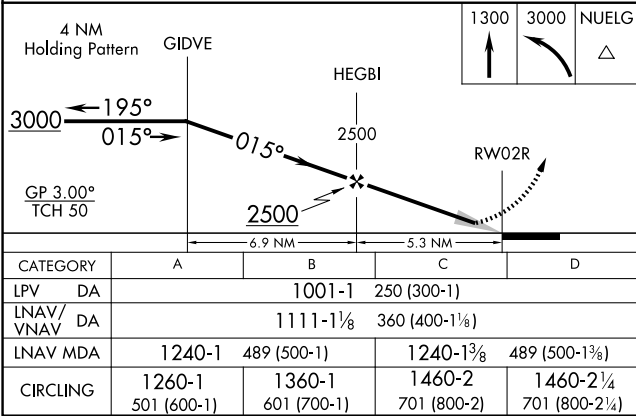
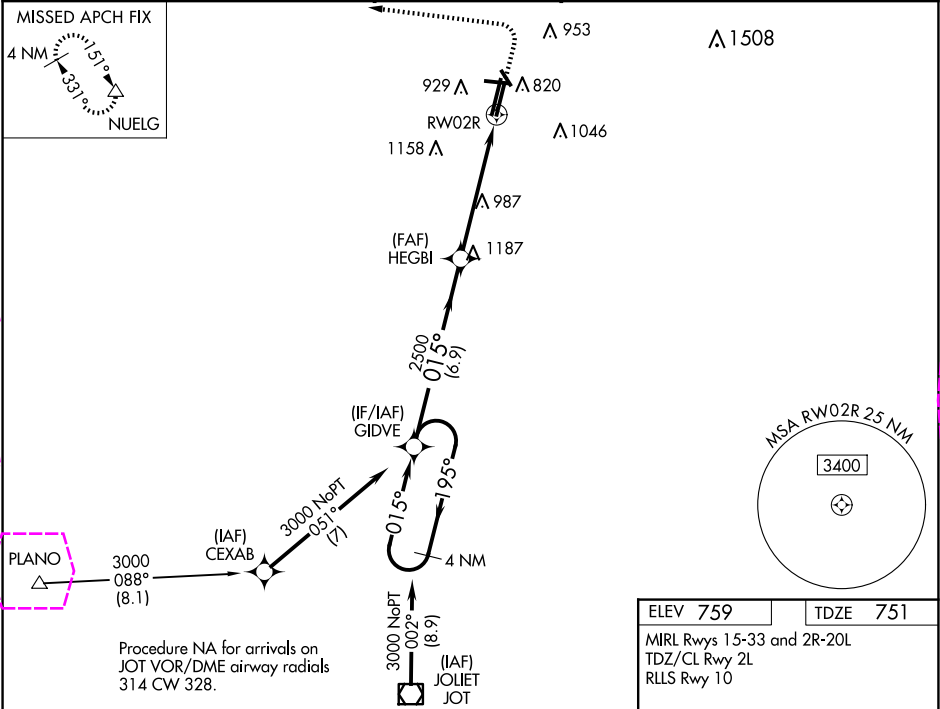
RNAV (GPS) RWY 2R

DUPAGE (DPA)

⚠ For uncompensated Baro-VNAV systems, LNAV/VNAV NA below -16°C (4°F) or above 54°C (130°F). DME/DME RNP-0.3 NA. When local altimeter setting not received, use Aurora altimeter setting: increase LPV DA to 1038 feet, LNAV/VNAV DA to 1148 feet and visibility LNAV/VNAV all Cats ¼ SM; increase all MDA 40 feet and visibility LNAV Cat C/D visibility ⅓ SM and Circling Cat C/D ¼ SM. VDP and Baro-VNAV NA when using Aurora altimeter setting. Circling Rwy 15, 28, 33 NA at night.

MISSED APPROACH:
Climb to 1300 then
climbing left turn to
3000 direct NUELG
and hold.

| | | | | |
|------------------------|---------------------------------------|------------------------------------|-------------------------|---------------------------|
| ATIS 132.075 | CHICAGO APP CON 133.5 349.0 | DUPAGE TOWER 120.9 257.8 | GND CON 121.8 | CLNC DEL 119.75 |
|------------------------|---------------------------------------|------------------------------------|-------------------------|---------------------------|



EC-3, 10 JUL 2025 to 07 AUG 2025

EC-3, 10 JUL 2025 to 07 AUG 2025

CHICAGO/WEST CHICAGO, ILLINOIS

AL-5104 (FAA)

25219

| | | |
|--|------------------------|---|
| WAAS CH 45531 W02A | APP CRS 015° | Rwy Ldg TDZE 751 Apt Elev 759 |
|--|------------------------|---|

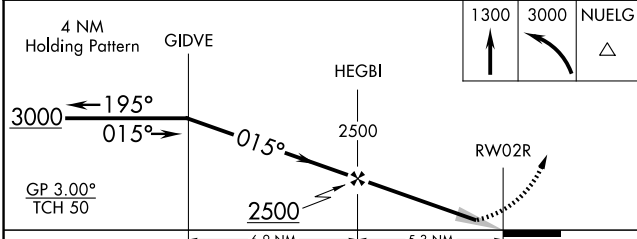
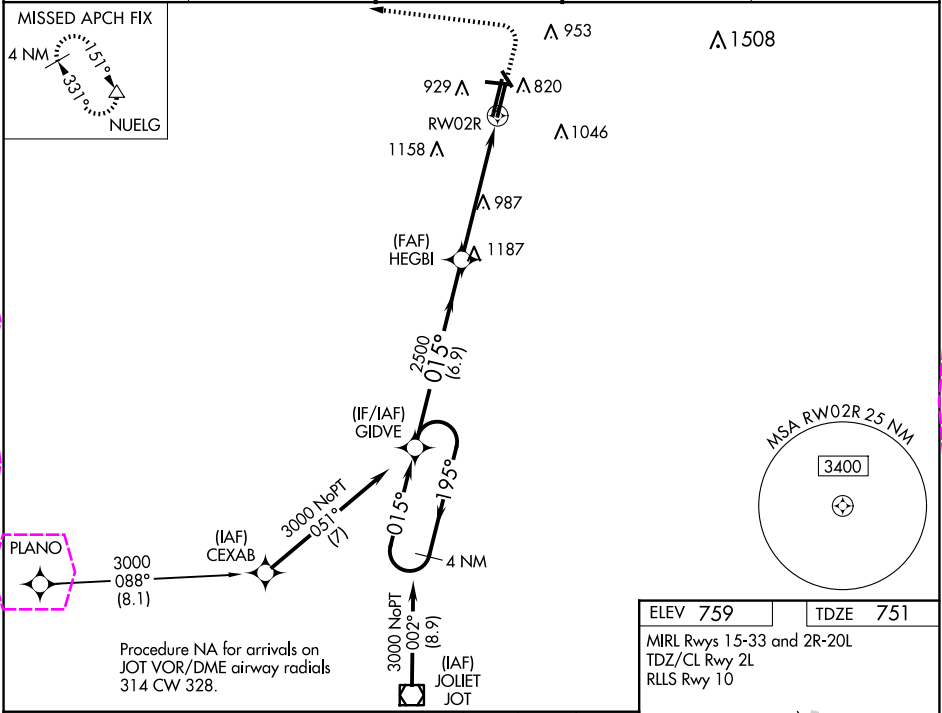
RNAV (GPS) RWY 2R

DUPAGE (DPA)

⚠ For uncompensated Baro-VNAV systems, LNAV/VNAV NA below -16°C (4°F) or above 54°C (130°F). DME/DME RNP-0.3 NA. When local altimeter setting not received, use Aurora altimeter setting: increase LPV DA to 1038 feet, LNAV/VNAV DA to 1148 feet and visibility LNAV/VNAV all Cats ¼ SM; increase all MDA 40 feet and visibility LNAV Cat C/D visibility ⅓ SM and Circling Cat C/D ¼ SM. VDP and Baro-VNAV NA when using Aurora altimeter setting. Circling Rwy 15, 28, 33 NA at night.

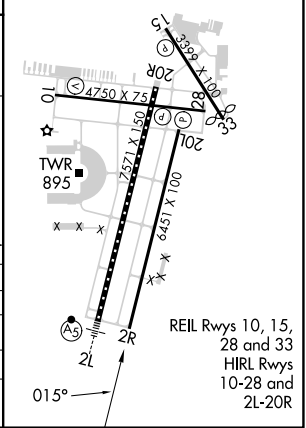
MISSED APPROACH:
Climb to 1300 then climbing left turn to 3000 direct NUELG and hold.

| | | | | |
|------------------------|---------------------------------------|------------------------------------|-------------------------|---------------------------|
| ATIS 132.075 | CHICAGO APP CON 133.5 349.0 | DUPAGE TOWER 120.9 257.8 | GND CON 121.8 | CLNC DEL 119.75 |
|------------------------|---------------------------------------|------------------------------------|-------------------------|---------------------------|



| CATEGORY | A | B | C | D |
|----------|-----------------------|-----------------------|-----------------------|-------------------------|
| LPV DA | | 1001-1 | 250 (300-1) | |
| LNAV/DA | | 1111-1½ | 360 (400-1½) | |
| LNAV MDA | 1240-1 | 489 (500-1) | 1240-1¾ | 489 (500-1¾) |
| CIRCLING | 1260-1 501 (600-1) | 1360-1 601 (700-1) | 1460-2 701 (800-2) | 1460-2¼ 701 (800-2¼) |

ELEV 759 TDZE 751
MIRL Rwy 15-33 and 2R-20L
TDZ/CL Rwy 2L
RLS Rwy 10



CHICAGO/WEST CHICAGO, ILLINOIS

Orig-E 07OCT21

41°54'N-88°15'W

RNAV (GPS) RWY 2R

DUPAGE (DPA)

EC-3, 07 AUG 2025 to 04 SEP 2025

EC-3, 07 AUG 2025 to 04 SEP 2025