

CHICAGO/AURORA, ILLINOIS

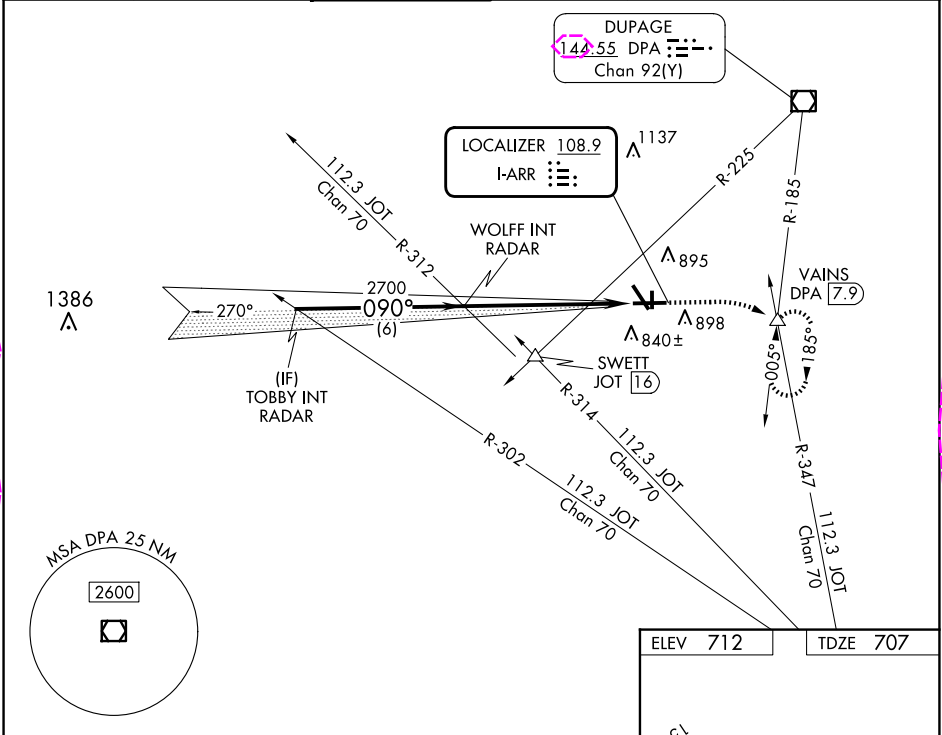
AL-5103 (FAA)


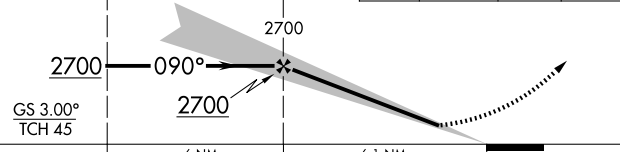
25163

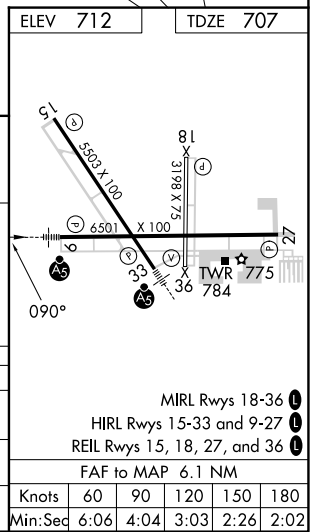
LOC I-ARR <b>108.9</b>	APP CRS <b>090°</b>	Rwy Ldg TDZE Apt Elev <b>6501</b> <b>707</b> <b>712</b>
---------------------------	------------------------	--

ILS or LOC RWY 9  
AURORA MUNI (ARR)

RADAR required for procedure entry.			MALS	MISSED APPROACH: Climb to 1200 then climbing right turn to 3000 on heading 090° and on DPA VOR/DME R-185 to VAINS INT/DPA 7.9 DME and hold, continue climb-in-hold to 3000.	
For inop ALS, increase S-LOC 9 Cat C/D visibilities to 1½ SM.					
ATIS <b>125.85</b>	CHICAGO APP CON <b>133.5 349.0</b>	AURORA TOWER ★ <b>120.6 (CTAF)</b>	GND CON <b>121.7</b>	CLNC DEL <b>121.7</b> (When tower closed)	UNICOM <b>122.95 123.5</b>



<div>TOBBY INT RADAR</div> <div>WOLFF INT RADAR</div>		<div>1200</div> <div>↑</div>	<div>3000</div> <div>hdg 090°</div>	<div>DPA</div> <div>R-185</div>	<div>VAINS</div> <div>△</div>
					
<div>GS 3.00°</div> <div>TCH 45</div>					
CATEGORY	A	B	C	D	
S-ILS 9	907-½ 200 (200-½)				
S-LOC 9	1220-½ 513 (600-½)		1220-1 513 (600-1)		
<div>C</div> CIRCLING	1220-1 508 (600-1)		1300-1½ 588 (600-1½)	1320-2 608 (700-2)	



CHICAGO/AURORA, ILLINOIS

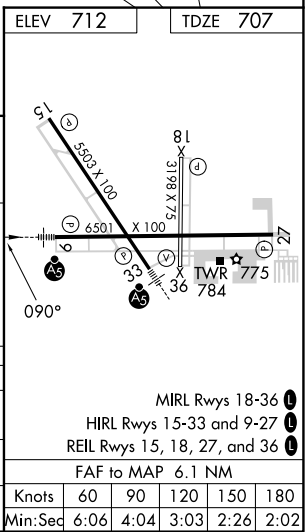
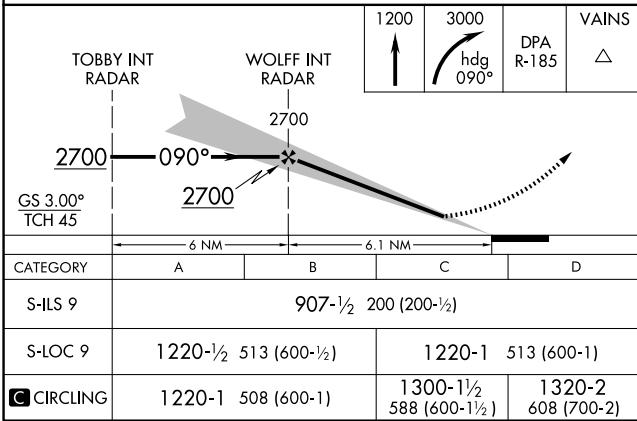
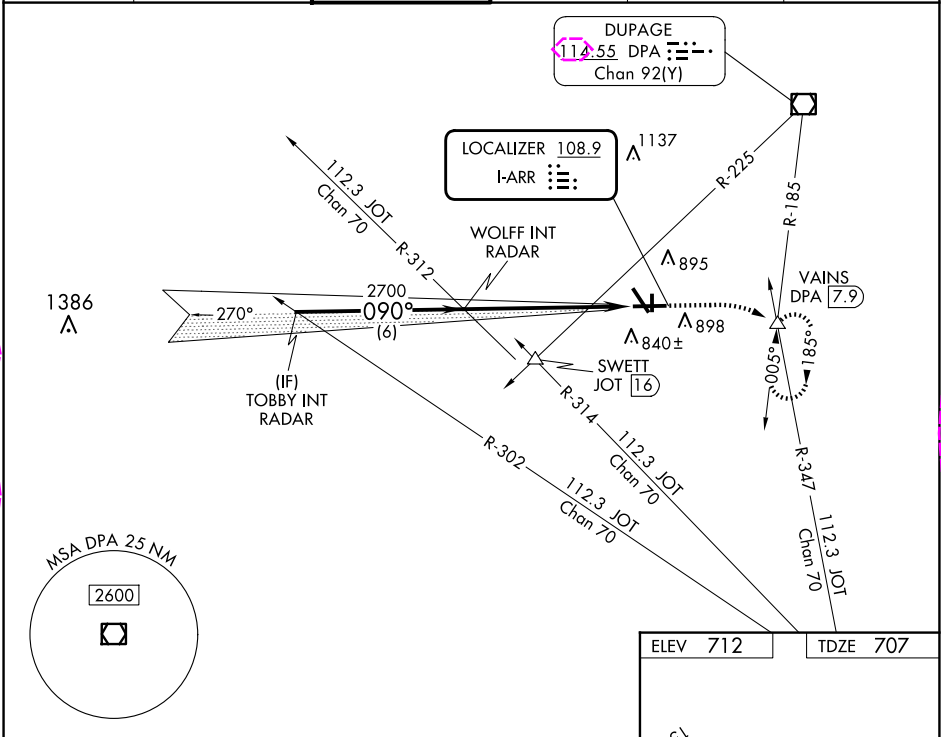
AL-5103 (FAA)

25219

LOC I-ARR <b>108.9</b>	APP CRS <b>090°</b>	Rwy Ldg TDZE Apt Elev <b>6501</b> <b>707</b> <b>712</b>
---------------------------	------------------------	--

ILS or LOC RWY 9  
AURORA MUNI (ARR)

RADAR required for procedure entry.			MALS	MISSED APPROACH: Climb to 1200 then climbing right turn to 3000 on heading 090° and on DPA VOR/DME R-185 to VAINS INT/DPA 7.9 DME and hold, continue climb-in-hold to 3000.	
For inop ALS, increase S-LOC 9 Cat C/D visibilities to 1½ SM.					
ATIS <b>125.85</b>	CHICAGO APP CON <b>133.5 349.0</b>	AURORA TOWER ★ <b>120.6 (CTAF)</b>	GND CON <b>121.7</b>	CLNC DEL <b>121.7</b> (When tower closed)	UNICOM <b>122.95 123.5</b>



CHICAGO/AURORA, ILLINOIS

Amdt 4A 08SEP22

41°46'N-88°29'W

AURORA MUNI (ARR)  
ILS or LOC RWY 9

EC-3, 07 AUG 2025 to 04 SEP 2025

EC-3, 07 AUG 2025 to 04 SEP 2025