

WASHINGTON, DC

AL-5100 (FAA)

24249

APP CRS	Rwy Idg	10501
301°	TDZE	288
	Apt Elev	312

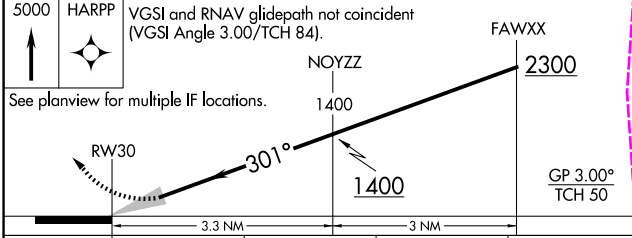
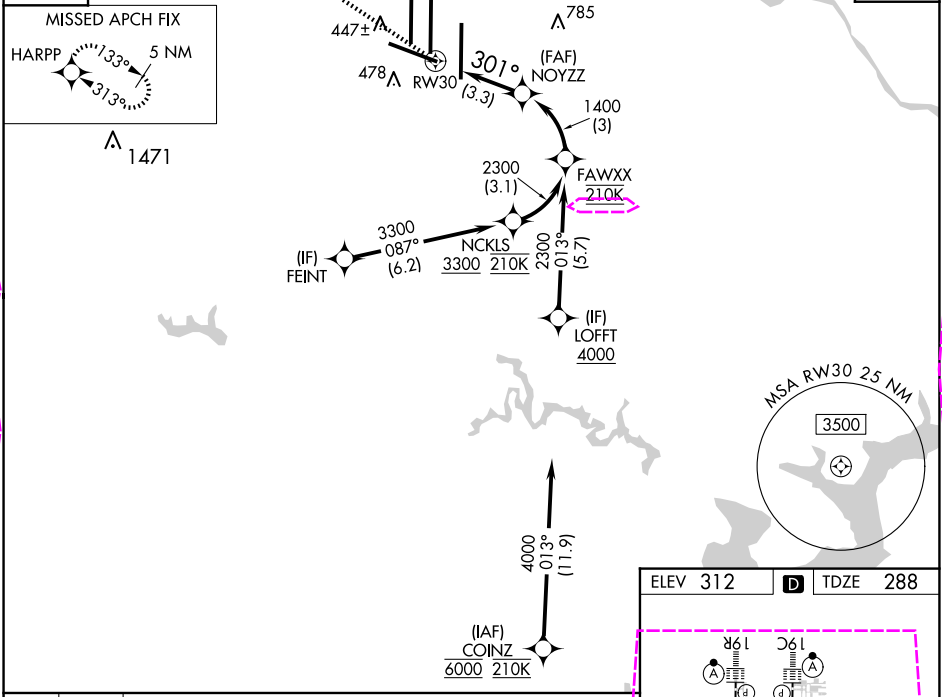
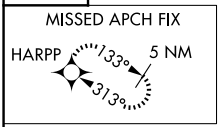
# RNAV (RNP) Z RWY 30

WASHINGTON DULLES INTL (IAD)

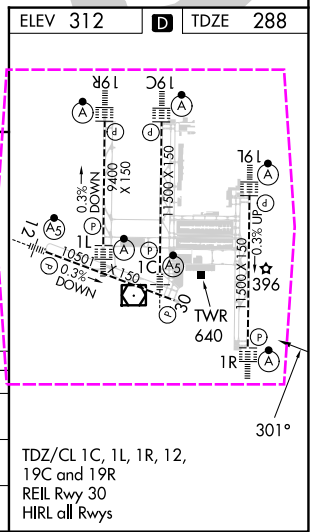
RNP AR APCH - GPS.	MISSED APPROACH: Climb to 5000 direct HARPP and hold.
For uncompensated Baro-VNAV systems, procedure NA below -13°C or above 54°C.	

POTOMAC APP CON 120.45 306.925 (241°-330°) 128.525 306.925 (091°-240°) 126.1 338.25 (331°-090°)	DULLES TOWER 120.1 317.8 (Rwy 1R/19L) 120.25 348.6 (Rwy 1C/19C) 134.425 348.6 (Rwys 1L/19R and 12/30)	GND CON 121.9 317.8 (EAST) 121.625 348.6 (WEST)	CLNC DEL 135.7 317.8
--	--	---	-------------------------

D-ATIS 134.85	CPDLC
------------------	-------



CATEGORY	A	B	C	D
RNP 0.11 DA		750-1 $\frac{3}{8}$	462 (500-1 $\frac{3}{8}$ )	
RNP 0.30 DA		808-1 $\frac{3}{8}$	520 (500-1 $\frac{3}{8}$ )	



**AUTHORIZATION REQUIRED**

WASHINGTON, DC  
Orig 11JUL24

38°57'N-77°28'W

WASHINGTON DULLES INTL (IAD)  
**RNAV (RNP) Z RWY 30**

NE-3, 10 JUL 2025 to 07 AUG 2025

NE-3, 10 JUL 2025 to 07 AUG 2025

WASHINGTON, DC

AL-5100 (FAA)

25219

APP CRS	Rwy Ldg	10501
301°	TDZE	288
	Apt Elev	312

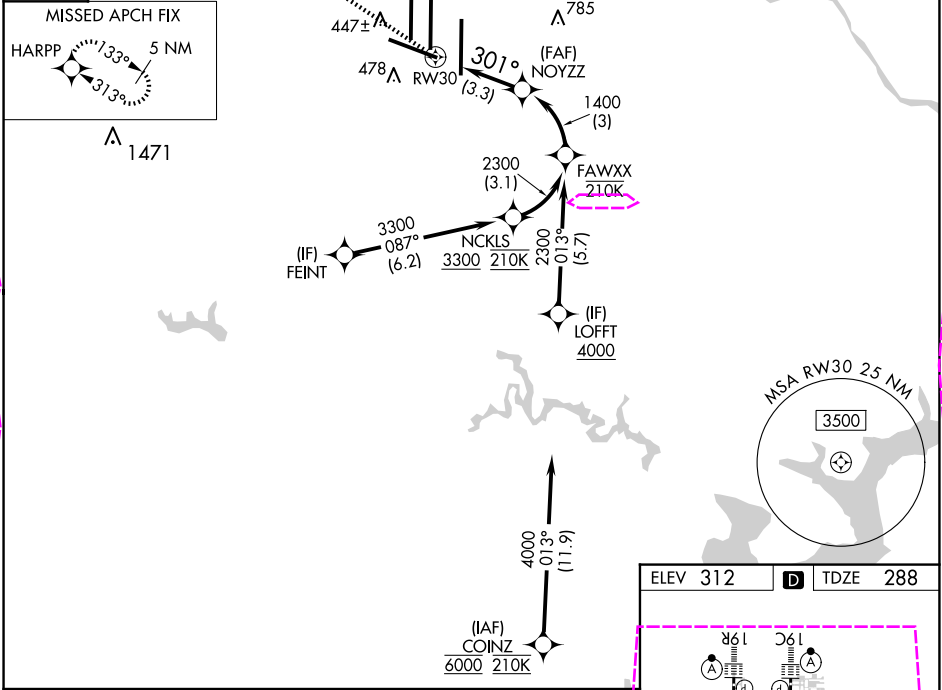
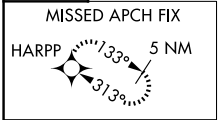
# RNAV (RNP) Z RWY 30

WASHINGTON DULLES INTL (IAD)

RNP AR APCH - GPS.	MISSED APPROACH: Climb to 5000 direct HARPP and hold.
For uncompensated Baro-VNAV systems, procedure NA below -13°C or above 54°C.	

POTOMAC APP CON 120.45 306.925 (241°-330°) 128.525 306.925 (091°-240°) 126.1 338.25 (331°-090°)	DULLES TOWER 120.1 317.8 (Rwy 1R/19L) 120.25 348.6 (Rwy 1C/19C) 134.425 348.6 (Rwys 1L/19R and 12/30)	GND CON 121.9 317.8 (EAST) 121.625 348.6 (WEST)	CLNC DEL 135.7 317.8
--	--	---	-------------------------

D-ATIS 134.85	CPDLC
------------------	-------



5000

HARPP

VGSI and RNAV glidepath not coincident  
(VGSI Angle 3.00/TCH 84).

FAWXX

2300

NOYZZ

1400

1400

GP 3.00°  
TCH 50

See planview for multiple IF locations.

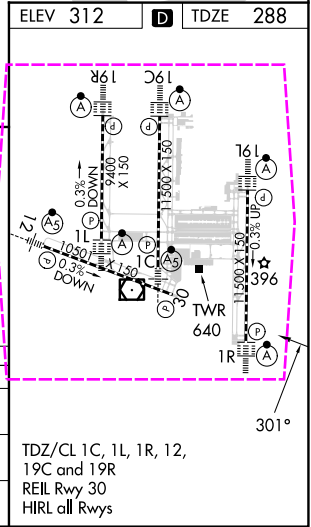
RW30

301°

3.3 NM

3 NM

CATEGORY	A	B	C	D
RNP 0.11 DA		750-1 <sup>3</sup> / <sub>8</sub>	462 (500-1 <sup>3</sup> / <sub>8</sub> )	
RNP 0.30 DA		808-1 <sup>3</sup> / <sub>8</sub>	520 (500-1 <sup>3</sup> / <sub>8</sub> )	



**AUTHORIZATION REQUIRED**

WASHINGTON, DC  
Orig-A 07AUG25

38°57'N-77°28'W

WASHINGTON DULLES INTL (IAD)  
**RNAV (RNP) Z RWY 30**

NE-3, 07 AUG 2025 to 04 SEP 2025

NE-3, 07 AUG 2025 to 04 SEP 2025