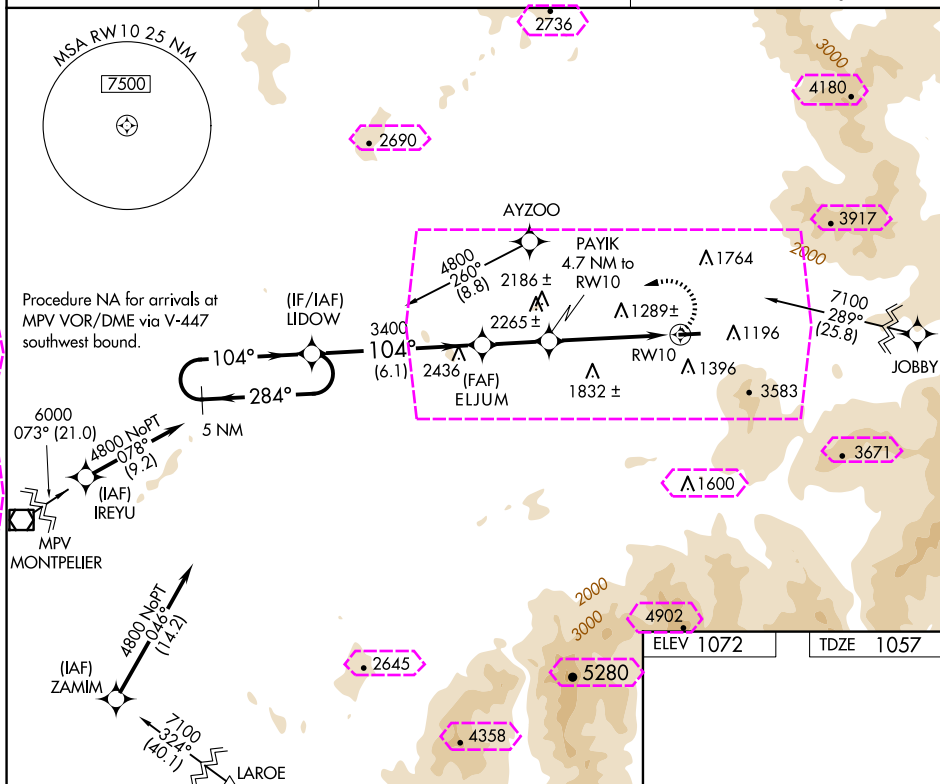


RNAV (GPS) Y RWY 10
MOUNT WASHINGTON RGNL (HTE)

MISSED APPROACH: Climbing left turn to 4800 direct UUDW and hold

ASOS 118.525	BOSTON CENTER 135.7 282.2	UNICOM 122.8 (CTAF) 0
------------------------	-------------------------------------	--



5 NM Holding Pattern

LIDOW

ELJUM

PAYK 4.7 NM to RW10

4800

284°

104°

104°

3400*

3.06° TCH 45

2600

2.3 NM to RW10

RW10

6.1 NM

2.4 NM

2.4 NM

2.3

VGS1 and descent angles not coincident (VGS1 Angle 3.50/TCH 45).

4800

LIDOW

104°

0.6% UP

4001 X 75

CATEGORY	A	B	C	D
RNAV MDA	1940-1¼ 883 (900-1¼)		1940-2¾ 883 (900-2¾)	NA
CIRCLING	1940-1¼ 868 (900-1¼)		1980-2¾ 908 (1000-2¾)	NA

REIL Rwy 10 and 28

MIRL Rwy 10-28

WHITEFIELD, NEW HAMPSHIRE

AL-5082 (FAA)

25219

APP CRS	Rwy Ldg	4001
104°	TDZE	1057
	Apt Elev	1072

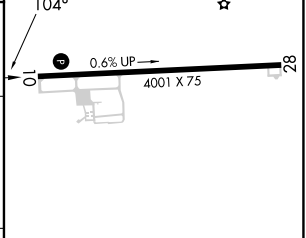
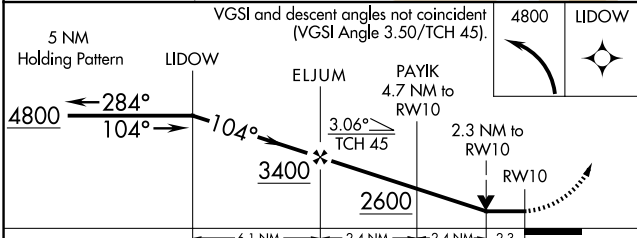
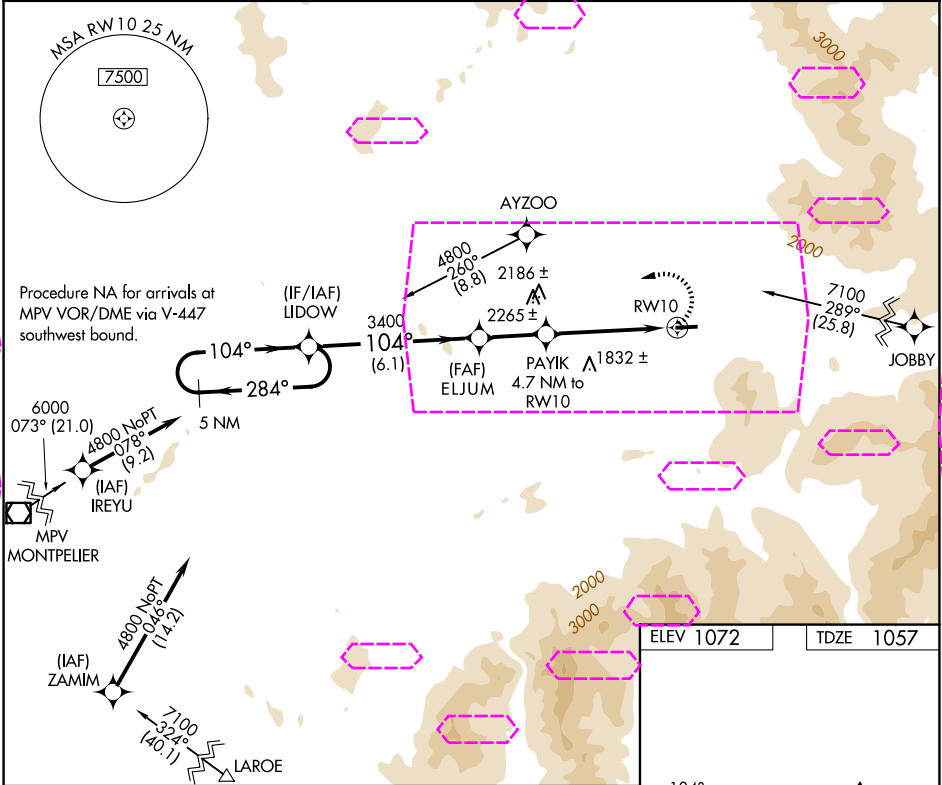
RNAV (GPS) Y RWY 10

MOUNT WASHINGTON RGNL (HIE)

⚠ Circling NA south of Rwy 10-28. DME/DME RNP-0.3 NA. Visibility reduction by helicopters NA. When local altimeter setting not received, use Lyndonville altimeter setting and increase all MDA 80 feet; increase LNAV and Circling Cat B/C visibilities ¼ mile. VDP NA with Lyndonville altimeter setting. Circling to Rwy 28 NA at night.

⚠ MISSED APPROACH: Climbing left turn to 4800 direct LIDOW and hold.

ASOS 118.525	BOSTON CENTER 135.7 282.2	UNICOM 122.8 (CTAF) 0
-----------------	------------------------------	--------------------------



CATEGORY	A	B	C	D
LNAV MDA	1940-1¼ 883 (900-1¼)	1940-2¾ 883 (900-2¾)	1940-2¾ 883 (900-2¾)	NA
CIRCLING	1940-1¼ 868 (900-1¼)	1980-2¾ 908 (1000-2¾)	1980-2¾ 908 (1000-2¾)	NA

REIL Rwy 10 and 28 0
MIRL Rwy 10-28 0

NE-1, 07 AUG 2025 to 04 SEP 2025

NE-1, 07 AUG 2025 to 04 SEP 2025