

JACKSON, TENNESSEE

AL-5062 (FAA)

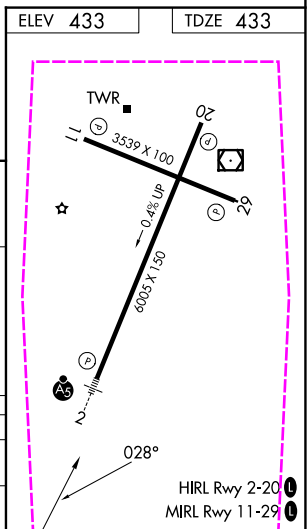
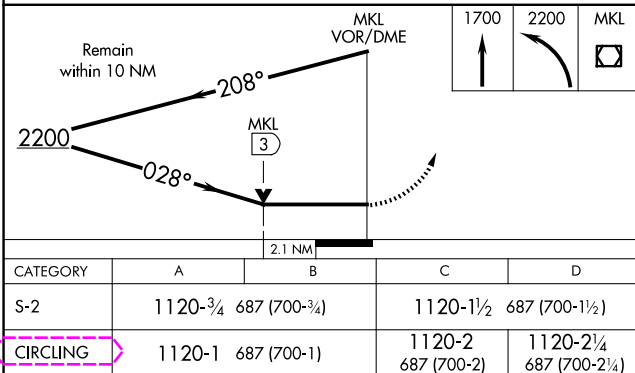
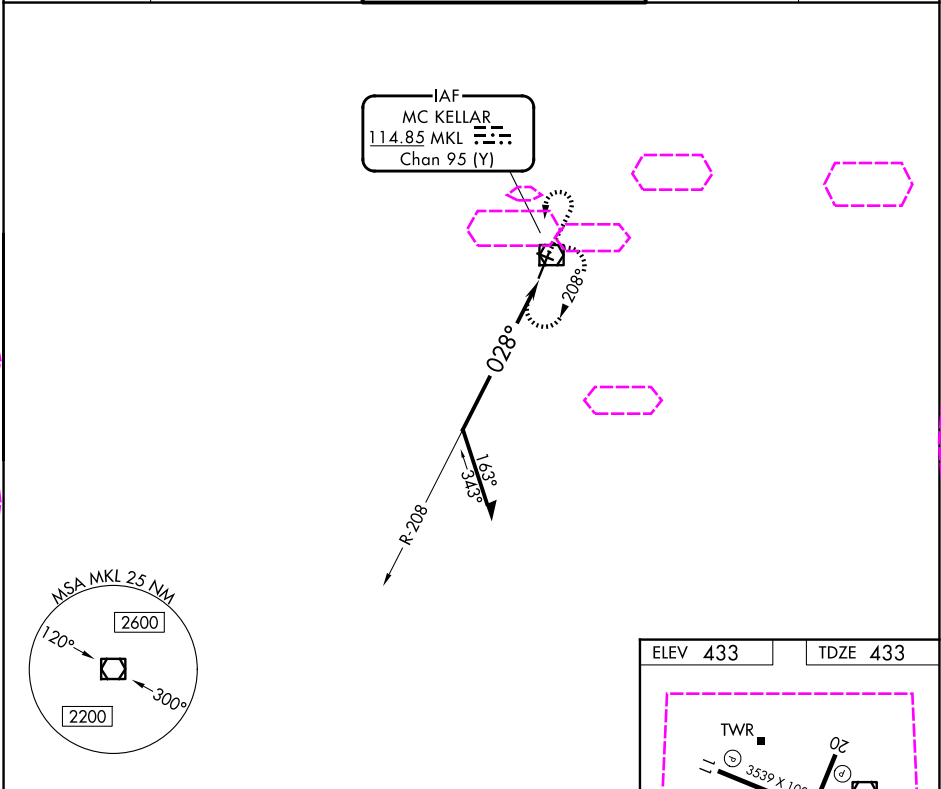
25219

VOR/DME MKL 114.85 Chan 95 (Y)	APP CRS 028°	Rwy Ldg 6005 TDZE 433 Apt Elev 433
--	------------------------	---

VOR RWY 2
JACKSON RGNL (MKL)

⚠ Rwy 2 helicopter visibility reduction below ¾ SM NA. For inop ALS, increase S-2 Cat A/B visibility to 1 SM.	MALSR 	MISSED APPROACH: Climb to 1700 then climbing left turn to 2200 direct MKL VOR/DME and hold, continue climb-in-hold to 2200.
--	-----------	---

ASOS 119.325	MEMPHIS CENTER 134.65 316.15	JACKSON TOWER ★ 127.15 (CTAF) 0 249.95	GND CON 120.9	UNICOM 122.95
------------------------	--	---	-------------------------	-------------------------



JACKSON, TENNESSEE
Amdt 1 28DEC23

35°36'N-88°55'W

JACKSON RGNL (MKL)
VOR RWY 2

SE-1, 07 AUG 2025 to 04 SEP 2025

SE-1, 07 AUG 2025 to 04 SEP 2025