

JACKSON, TENNESSEE

AL-5062 (FAA)

25163

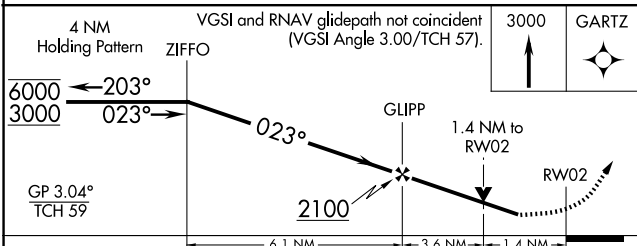
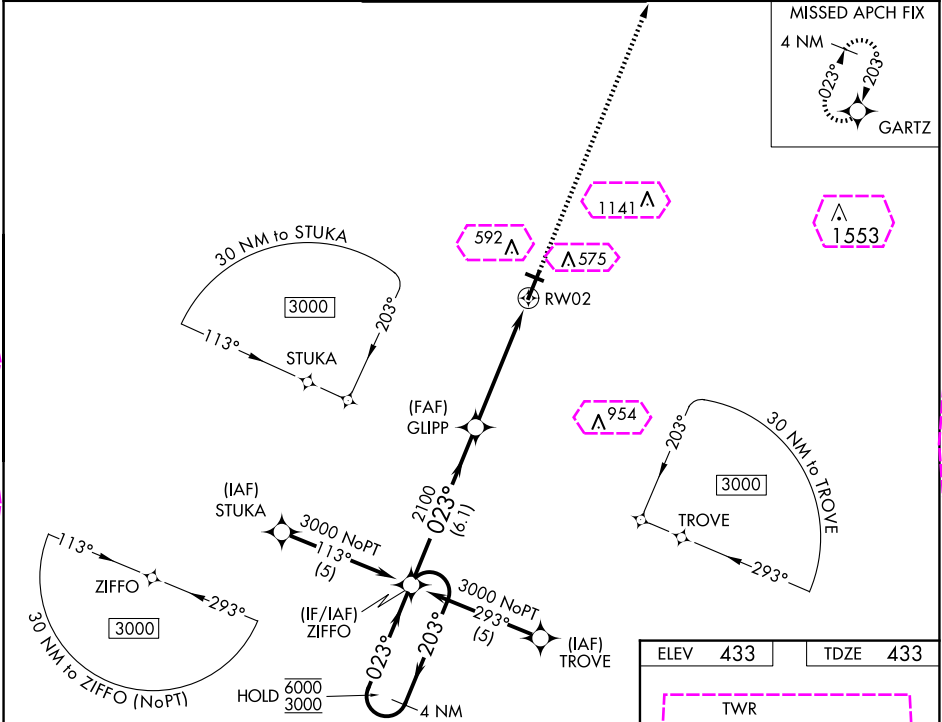
WAAS CH 93511 W02A	APP CRS 023°	Rwy Ldg 6005 TDZE 433 Apt Elev 433
--	------------------------	---

RNAV (GPS) RWY 2

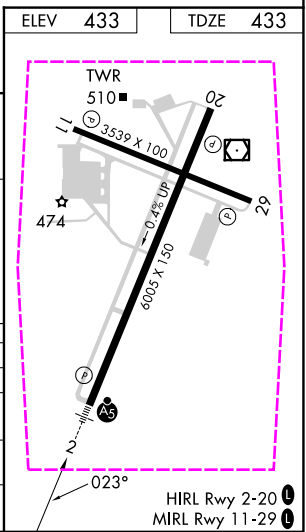
JACKSON RGNL (MKL)

RNP APCH - GPS.	MALSR 	MISSED APPROACH: Climb to 3000 direct GARTZ and hold.
 For uncompensated Baro-VNAV systems, LNAV/VNAV NA below -15°C or above 48°C. For inop ALS, increase visibility LNAV Cats A/B to 1 SM, and Cats C/D to 1 1/2 SM.		

ASOS 119.325	MEMPHIS CENTER 134.65 316.15	JACKSON TOWER ★ 127.15 (CTAF) 0 249.95	GND CON 120.9	UNICOM 122.95
------------------------	--	--	-------------------------	-------------------------



CATEGORY	A	B	C	D
LPV DA		772-3/4	339 (400-3/4)	
LNAV/VNAV DA		886-7/8	453 (500-7/8)	
LNAV MDA	900-3/4	467 (500-3/4)	900-1	467 (500-1)
CIRCLING	900-1 467 (500-1)	920-1 487 (500-1)	960-1 1/2 527 (600-1 1/2)	1080-2 647 (700-2)



JACKSON, TENNESSEE
Orig-C 19MAY22

35°36'N-88°55'W

JACKSON RGNL (MKL)
RNAV (GPS) RWY 2

JACKSON, TENNESSEE

AL-5062 (FAA)

25219

WAAS CH 93511 W02A	APP CRS 023°	Rwy Ldg 6005 TDZE 433 Apt Elev 433
--	------------------------	---

RNAV (GPS) RWY 2

JACKSON RGNL (MKL)

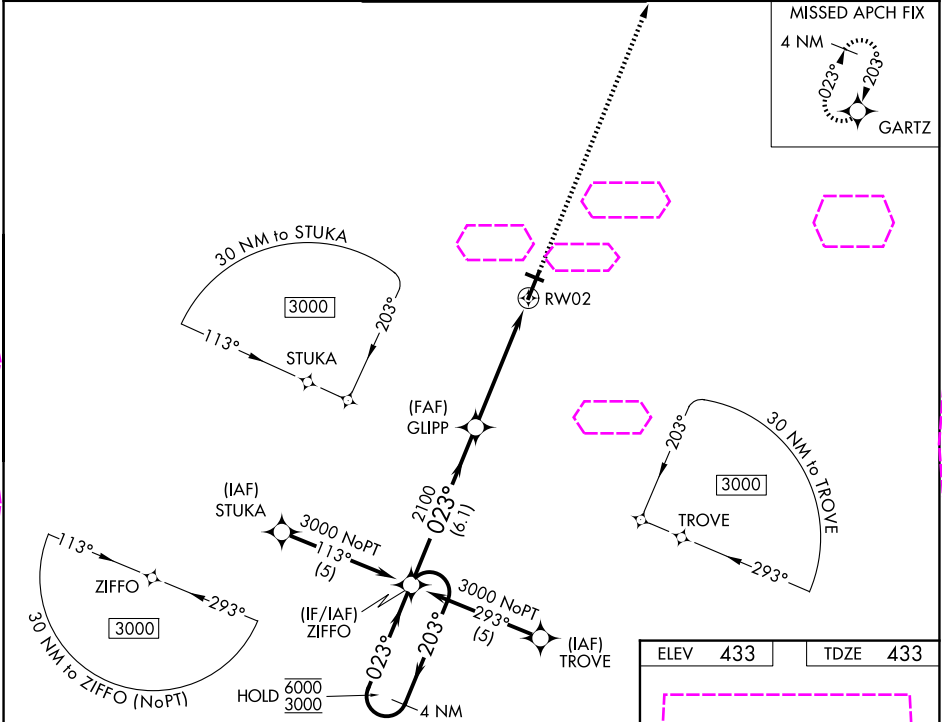
RNP APCH - GPS.

▼ For uncompensated Baro-VNAV systems, LNAV/VNAV NA below -15°C or above 48°C.
▲ For inop ALS, increase visibility LNAV Cats A/B to 1 SM, and Cats C/D to 1 ½ SM.

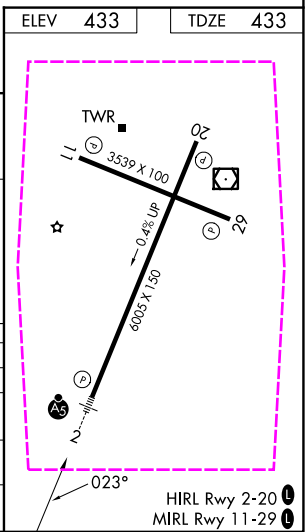
MALSR

MISSED APPROACH:
Climb to 3000 direct GARTZ and hold.

ASOS 119.325	MEMPHIS CENTER 134.65 316.15	JACKSON TOWER ★ 127.15 (CTAF) 0 249.95	GND CON 120.9	UNICOM 122.95
------------------------	--	--	-------------------------	-------------------------



4 NM Holding Pattern ZIFFO		VGSI and RNAV glidepath not coincident (VGSI Angle 3.00/TCH 57).		3000	GARTZ
6000	← 203°	→ 023°	023°	GLIPP	1.4 NM to RW02
3000	GP 3.04° TCH 59		2100		RW02
		6.1 NM	3.6 NM	1.4 NM	
CATEGORY	A	B	C	D	
LPV DA	772-¾		339 (400-¾)		
LNAV/VNAV DA	886-⅞		453 (500-⅞)		
LNAV MDA	900-¾	467 (500-¾)	900-1	467 (500-1)	
CIRCLING	900-1 467 (500-1)	920-1 487 (500-1)	960-1½ 527 (600-1½)	1080-2 647 (700-2)	



SE-1, 07 AUG 2025 to 04 SEP 2025

SE-1, 07 AUG 2025 to 04 SEP 2025