

JACKSON, TENNESSEE

AL-5062 (FAA)

25163

WAAS CH <b>40312</b> <b>W20A</b>	APP CRS <b>203°</b>	Rwy Ldg <b>6005</b> TDZE <b>418</b> Apt Elev <b>433</b>
--	------------------------	---

# RNAV (GPS) RWY 20

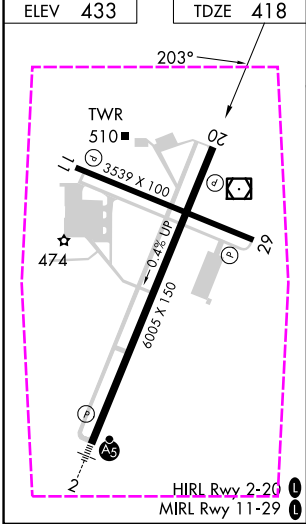
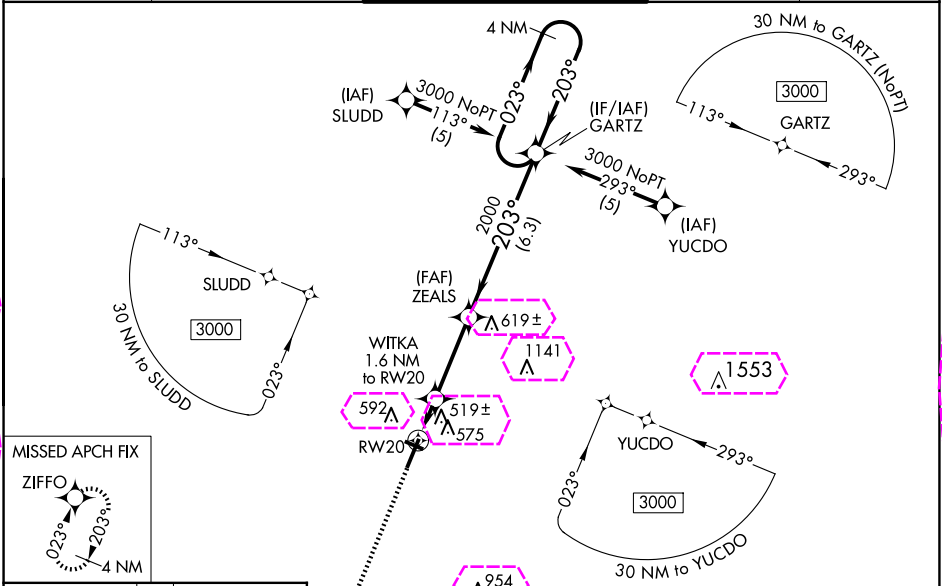
JACKSON RGNL (MKL)

RNP APCH - GPS

▼ Rwy 20 helicopter visibility reduction below  $\frac{3}{4}$  SM NA. For uncompensated Baro-VNAV systems, LNAV/VNAV NA below -15°C or above 48°C. Baro-VNAV NA when using Dyersburg altimeter setting. When local altimeter setting not received, use Dyersburg altimeter setting: increase LPV DA to 802 feet and visibility all Cats  $\frac{1}{2}$  SM; increase LNAV/VNAV DA to 910 feet and visibility all Cats  $\frac{1}{4}$  SM; increase all MDA 100 feet and visibility LNAV Cat C and D and Circling Cat C  $\frac{1}{2}$  SM, and Circling Cat D  $\frac{1}{2}$  SM.

MISSED APPROACH:  
Climb to 3000 direct  
ZIFFO and hold.

ASOS <b>119.325</b>	MEMPHIS CENTER <b>134.65 316.15</b>	JACKSON TOWER ★ <b>127.15 (CTAF) 249.95</b>	GND CON <b>120.9</b>	UNICOM <b>122.95</b>
------------------------	--	--	-------------------------	-------------------------



3000 ↑	ZIFFO ✦	VGSI and RNAV glidepath not coincident (VGSI Angle 3.00/TCH 46).			GARTZ	4 NM Holding Pattern
* LNAV only	WITKA 1.6 NM to RW20	ZEALS	203°		023° →	← 203° 3000
RW20		2000		GP 3.00° TCH 50		
1.6 NM		3.2 NM		6.3 NM		
CATEGORY	A		B	C	D	
LPV DA	710-1 292 (300-1)					
LNAV/ VNAV DA	818-1½ 400 (400-1½)					
LNAV MDA	780-1 362 (400-1)					780-1¼ 362 (400-1¼)
CIRCLING	900-1 467 (500-1)	920-1 487 (500-1)	960-1½ 527 (600-1½)	1100-2 667 (700-2)		

JACKSON, TENNESSEE  
Orig-C 19MAY22

35°36'N-88°55'W

# RNAV (GPS) RWY 20

JACKSON RGNL (MKL)

SE-1, 10 JUL 2025 to 07 AUG 2025

SE-1, 10 JUL 2025 to 07 AUG 2025

JACKSON, TENNESSEE

AL-5062 (FAA)

25219

WAAS CH <b>40312</b> <b>W20A</b>	APP CRS <b>203°</b>	Rwy Ldg <b>6005</b> TDZE <b>418</b> Apt Elev <b>433</b>
--	------------------------	---

# RNAV (GPS) RWY 20

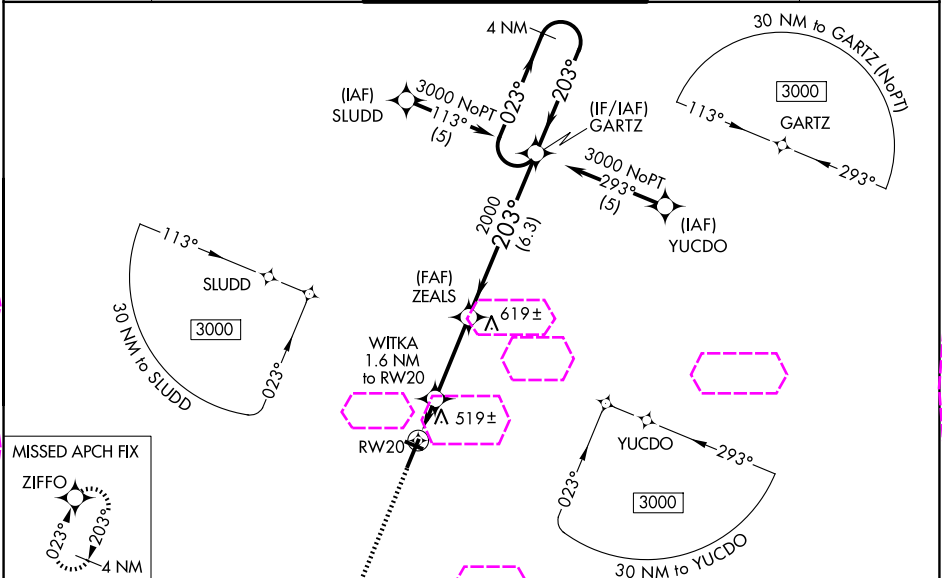
JACKSON RGNL (MKL)

RNP APCH - GPS

▼ Rwy 20 helicopter visibility reduction below ¾ SM NA. For uncompensated Baro-VNAV systems, LNAV/VNAV NA below -15°C or above 48°C. Baro-VNAV NA when using Dyersburg altimeter setting. When local altimeter setting not received, use Dyersburg altimeter setting: increase LPV DA to 802 feet and visibility all Cats ½ SM; increase LNAV/VNAV DA to 910 feet and visibility all Cats ¼ SM; increase all MDA 100 feet and visibility LNAV Cat C and D and Circling Cat C ¼ SM, and Circling Cat D ½ SM.

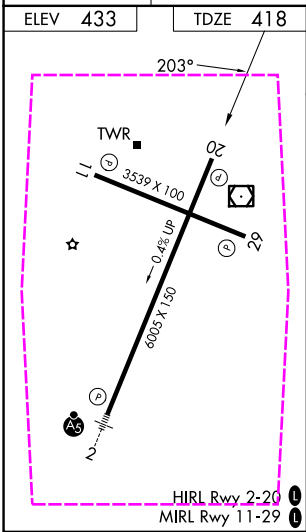
MISSED APPROACH:  
Climb to 3000 direct  
ZIFFO and hold.

ASOS <b>119.325</b>	MEMPHIS CENTER <b>134.65 316.15</b>	JACKSON TOWER ★ <b>127.15 (CTAF) 0 249.95</b>	GND CON <b>120.9</b>	UNICOM <b>122.95</b>
------------------------	--	--	-------------------------	-------------------------



SE-1, 07 AUG 2025 to 04 SEP 2025

SE-1, 07 AUG 2025 to 04 SEP 2025



3000 ↑	ZIFFO ✦	VGSI and RNAV glidepath not coincident (VGSI Angle 3.00/TCH 46).			GARTZ	4 NM Holding Pattern
* LNAV only	WITKA 1.6 NM to RW20	ZEALS	203°		023° → ← 203°	3000
RW20		* 960		2000	GP 3.00° TCH 50	
1.6 NM		3.2 NM		6.3 NM		
CATEGORY		A	B	C	D	
LPV DA	710-1 292 (300-1)					
LNAV/VNAV DA	818-1½ 400 (400-1½)					
LNAV MDA	780-1 362 (400-1)					780-1¼ 362 (400-1¼)
CIRCLING	900-1 467 (500-1)	920-1 487 (500-1)	960-1½ 527 (600-1½)	1100-2 667 (700-2)		

JACKSON, TENNESSEE  
Orig-C 19MAY22

35°36'N-88°55'W

JACKSON RGNL (MKL)  
RNAV (GPS) RWY 20