

JACKSON, TENNESSEE

AL-5062 (FAA)

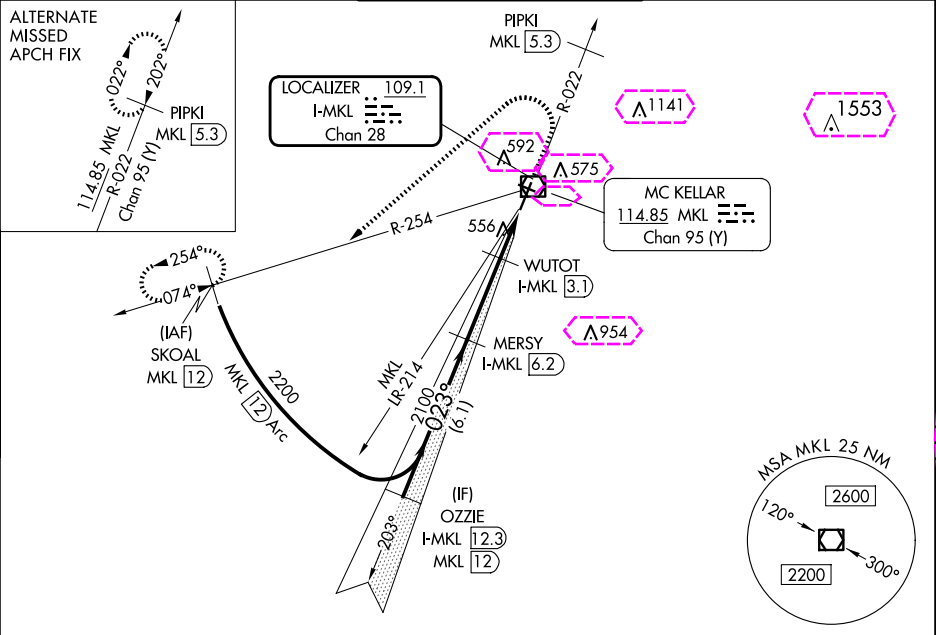
25163

LOC/DME I-MKL 109.1 Chan 28	APP CRS 023°	Rwy Ldg 6005 TDZE 433 Apt Elev 433
---	------------------------	---

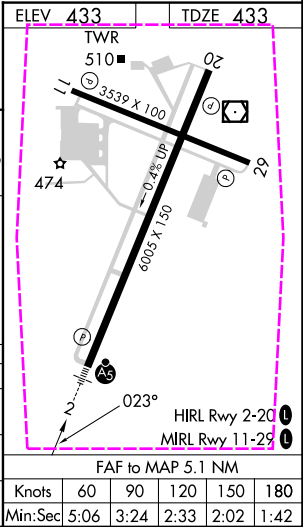
ILS or LOC RWY 2
JACKSON RGNL (MKL)

DME required. RADAR required for procedure entry.	MALSR 	MISSED APPROACH: Climb to 1000 then climbing left turn to 2200 on heading 230° and MKL VOR/DME R-254 to SKOAL/MKL 12 DME and hold.
Rwy 2 helicopter visibility reduction below 3/4 SM NA. For inop ALS, increase S-LOC 2 Cat A/B visibility to 1 SM and Cat C/D visibility 1 1/2 SM.		

ASOS 119.325	MEMPHIS CENTER 134.65 316.15	JACKSON TOWER ★ 127.15 (CTAF) 0 249.95	GND CON 120.9	UNICOM 122.95
------------------------	--	--	-------------------------	-------------------------



VGSi and ILS glidepath not coincident (VGSi Angle 3.00/TCH 57).				
OZZIE I-MKL 12.3, MERSY I-MKL 6.2, WUTOT I-MKL 3.1, I-MKL 2.3, I-MKL 1.2				
GS 3.00° TCH 59				
6.1 NM, 3.1 NM, 0.8, 1.1				
CATEGORY	A	B	C	D
S-ILS 2	770-3/4 337 (400-3/4)			
S-LOC 2	820-3/4 387 (400-3/4)			
CIRCLING	900-1 467 (500-1)	920-1 487 (500-1)	960-1 1/2 527 (600-1 1/2)	1100-2 667 (700-2)



JACKSON, TENNESSEE
Amdt 10 24MAR22

35°36'N-88°55'W

JACKSON RGNL (MKL)
ILS or LOC RWY 2

SE-1, 10 JUL 2025 to 07 AUG 2025

SE-1, 10 JUL 2025 to 07 AUG 2025

