

BLOOMINGTON/NORMAL, ILLINOIS

AL-5058 (FAA)

24193


WAAS CH 60909 W29A	APP CRS 291°	Rwy Idg 6525 TDZE 871 Apt Elev 871
--	------------------------	---

RNAV (GPS) RWY 29

CENTRAL IL RGNL/BLOOMINGTON-NORMAL (BMI)

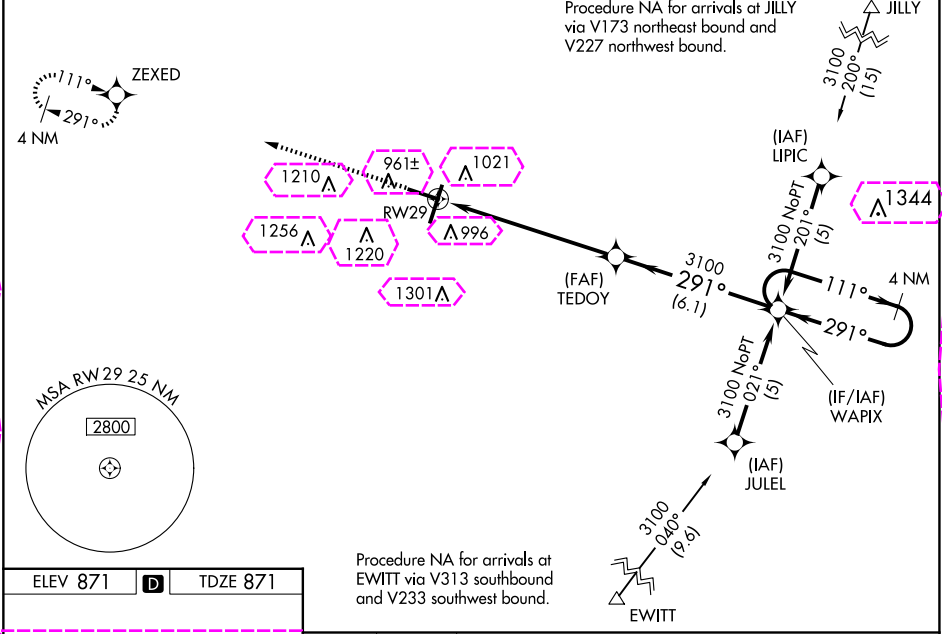
▼ For uncompensated Baro-VNAV systems, LNAV/VNAV NA below -16°C (4°F) or above 54°C (130°F). DME/DME RNP-0.3 NA. Baro-VNAV and VDP NA when using General Downing-Peoria Intl altimeter setting. When local altimeter setting not received, use General Downing-Peoria Intl altimeter setting: increase all DA 116 feet and all MDA 120 feet; increase LPV all Cats visibility to RVR 3500, LNAV/VNAV all Cats and LNAV Cats C/D visibility ¾ mile, and Circling Cats C/D visibility ¼ mile. For inoperative MALSRs when using General Downing-Peoria Intl Regional altimeter setting increase LPV all Cats visibility ½ mile, and LNAV Cat C/D visibility ¾ mile.

MALSR

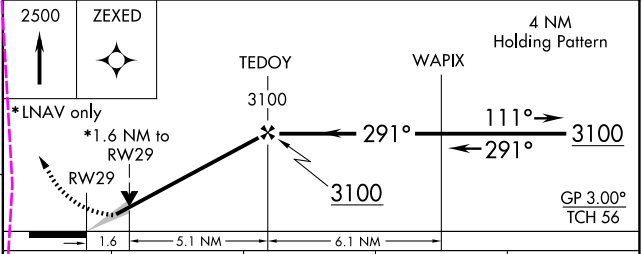
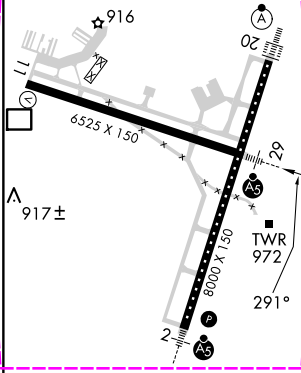


MISSED APPROACH:
Climb to 2500 direct ZEXED and hold.

ATIS 119.575	SAINT LOUIS APP CON 128.725 256.9	BLOOMINGTON TOWER ★ 124.6 (CTAF) 269.575	GND CON 121.65	UNICOM 122.95
------------------------	---	--	--------------------------	-------------------------



ELEV 871	D	TDZE 871
----------	----------	----------



CATEGORY	A	B	C	D
LPV DA	1121/24 250 (300-½)			
LNAV/VNAV DA	1304/50 433 (500-1)			
LNAV MDA	1460/24 589 (600-½)		1460-1¼ 589 (600-1¼)	
CIRCLING	1460-1 589 (600-1)		1620-2¼ 749 (800-2¼) 1620-2½ 749 (800-2½)	

BLOOMINGTON/NORMAL, ILLINOIS

CENTRAL IL RGNL/BLOOMINGTON-NORMAL (BMI)

Amdt 1A 15OCT15

40°29'N-88°55'W

RNAV (GPS) RWY 29

BLOOMINGTON/NORMAL, ILLINOIS

AL-5058 (FAA)

25219

WAAS CH 60909 W29A	APP CRS 291°	Rwy Ldg 6525 TDZE 871 Apt Elev 871
--	------------------------	---

RNAV (GPS) RWY 29

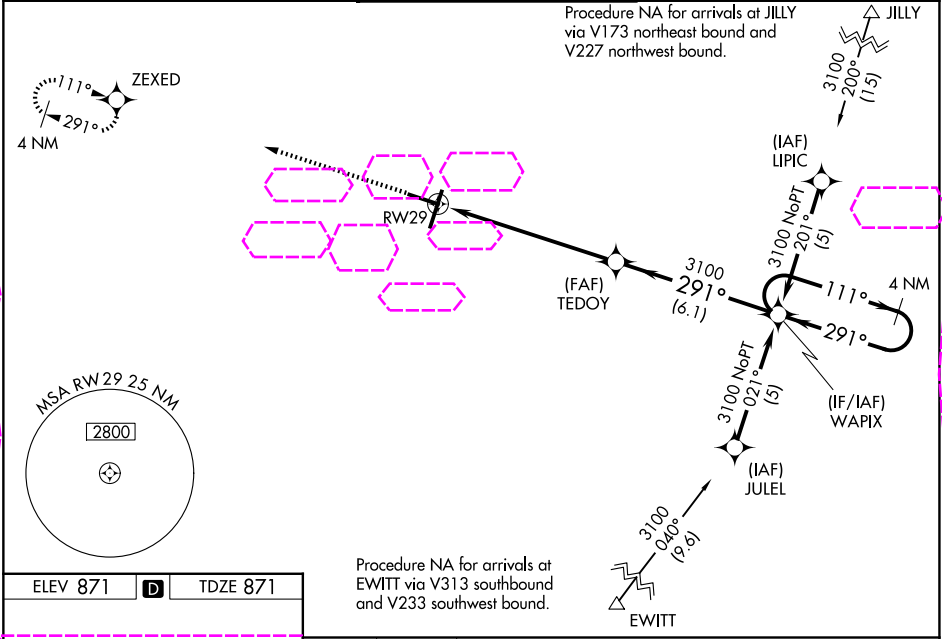
CENTRAL IL RGNL/BLOOMINGTON-NORMAL (BMI)

⚠ For uncompensated Baro-VNAV systems, LNAV/VNAV NA below -16°C (4°F) or above 54°C (130°F). DME/DME RNP-0.3 NA. Baro-VNAV and VDP NA when using General Downing-Peoria Intl altimeter setting. When local altimeter setting not received, use General Downing-Peoria Intl altimeter setting: increase all DA 116 feet and all MDA 120 feet; increase LPV all Cats visibility to RVR 3500, LNAV/VNAV all Cats and LNAV Cats C/D visibility ¾ mile, and Circling Cats C/D visibility ¼ mile. For inoperative MALSRs when using General Downing-Peoria Intl Regional altimeter setting increase LPV all Cats visibility ½ mile, and LNAV Cat C/D visibility ¾ mile.

MALSR

MISSED APPROACH:
Climb to 2500 direct ZEXED and hold.

ATIS 119.575	SAINT LOUIS APP CON 128.725 256.9	BLOOMINGTON TOWER ★ 124.6 (CTAF) 269.575	GND CON 121.65	UNICOM 122.95
------------------------	---	--	--------------------------	-------------------------



2500 ZEXED

TEDOY 3100

WAPIX 4 NM Holding Pattern

111° 291° 3100

GP 3.00° TCH 56

*LNAV only
*1.6 NM to RWY 29

1.6 5.1 NM 6.1 NM

CATEGORY	A	B	C	D
LPV DA	1121/24 250 (300-½)			
LNAV/VNAV DA	1304/50 433 (500-1)			
LNAV MDA	1460/24 589 (600-½)		1460-1¼ 589 (600-1¼)	
CIRCLING	1460-1 589 (600-1)		1620-2¼ 749 (800-2¼) 1620-2½ 749 (800-2½)	

TDZ/CL Rwy 20 **1**
HIRL Rwy 2-20 and 11-29 **1**

BLOOMINGTON/NORMAL, ILLINOIS

CENTRAL IL RGNL/BLOOMINGTON-NORMAL (BMI)

Amdt 1A 15OCT15

40°29'N-88°55'W

RNAV (GPS) RWY 29

EC-3, 07 AUG 2025 to 04 SEP 2025

EC-3, 07 AUG 2025 to 04 SEP 2025