

BLOOMINGTON/NORMAL, ILLINOIS

AL-5058 (FAA)

24361

WAAS CH 99303 W20A	APP CRS 201°	Rwy Idg 8000 TDZE 871 Apt Elev 871
--	------------------------	---

RNAV (GPS) RWY 20

CENTRAL IL RGNL/BLOOMINGTON-NORMAL (BMI)

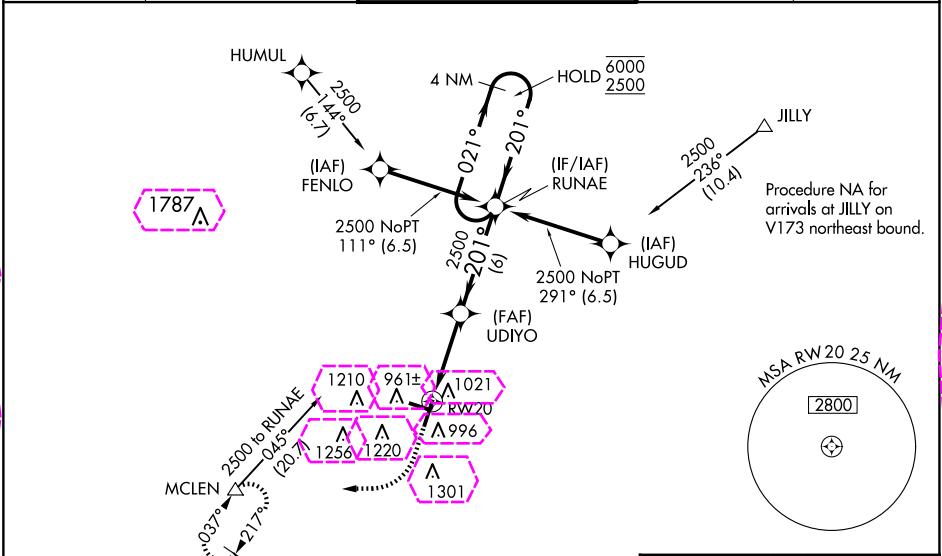
RNP APCH - GPS.

⚠ For uncompensated Baro-VNAV systems, LNAV/VNAV NA below -20°C or above 54°C. Baro-VNAV and VDP NA when using PIA altimeter setting. When local altimeter setting not received, use PIA altimeter setting: increase LPV DA to 1187 feet and all visibilities to RVR 2400; increase LNAV/VNAV DA to 1417 feet and all visibilities to RVR 6000; increase all MDAs 120 feet and LNAV visibility Cat C and D to RVR 5500 and Circling visibility Cat C and D ¼ SM. For inop ALS, increase LNAV Cat C and D visibility to RVR 6000. For inop ALS when using PIA altimeter setting, increase LPV all Cats visibility to RVR 4500.

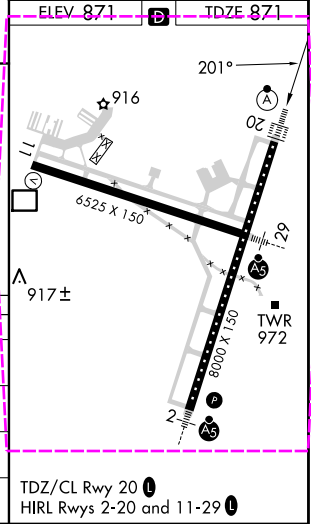
ALS F-2

MISSED APPROACH: Climb to 1500 then climbing right turn to 3000 direct MCLEN and hold.

ATIS 119.575	SAINT LOUIS APP CON 128.725 256.9	BLOOMINGTON TOWER ★ 124.6 (CTAF) 269.575	GND CON 121.65	UNICOM 122.95
------------------------	---	--	--------------------------	-------------------------



--	--	--	--	--



BLOOMINGTON/NORMAL, ILLINOIS

Amdt 2 26DEC24

CENTRAL IL RGNL/BLOOMINGTON-NORMAL (BMI)

40°29'N-88°55'W

RNAV (GPS) RWY 20

BLOOMINGTON/NORMAL, ILLINOIS

AL-5058 (FAA)

25219

WAAS CH 99303 W20A	APP CRS 201°	Rwy Ldg 8000 TDZE 871 Apt Elev 871
--	------------------------	---

RNAV (GPS) RWY 20

CENTRAL IL RGNL/BLOOMINGTON-NORMAL (BMI)

RNP APCH - GPS.

▼

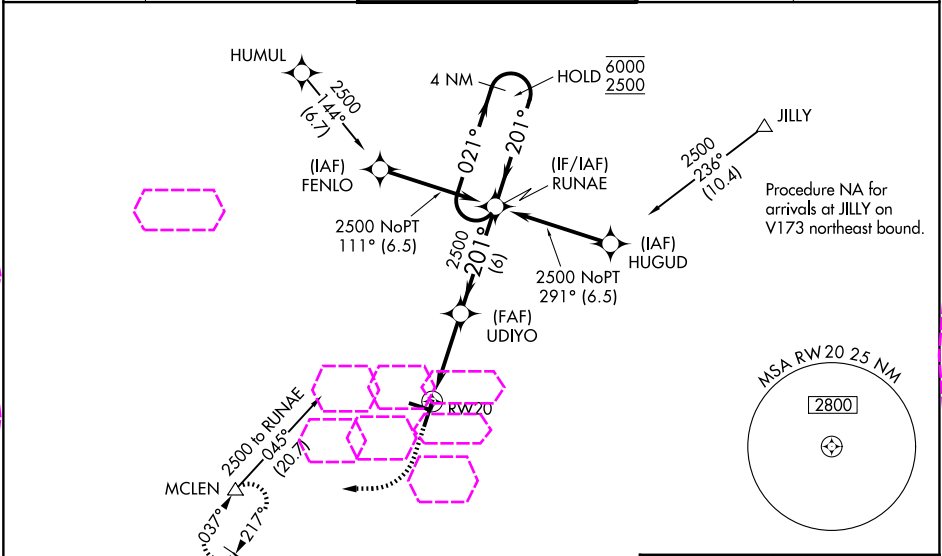
▲

For uncompensated Baro-VNAV systems, LNAV/VNAV NA below -20°C or above 54°C. Baro-VNAV and VDP NA when using PIA altimeter setting. When local altimeter setting not received, use PIA altimeter setting: increase LPV DA to 1187 feet and all visibilities to RVR 2400; increase LNAV/VNAV DA to 1417 feet and all visibilities to RVR 6000; increase all MDAs 120 feet and LNAV visibility Cat C and D to RVR 5500 and Circling visibility Cat C and D ¼ SM. For inop ALS, increase LNAV Cat C and D visibility to RVR 6000. For inop ALS when using PIA altimeter setting, increase LPV all Cats visibility to RVR 4500.

ALS F-2

MISSED APPROACH:
Climb to 1500 then climbing right turn to 3000 direct MCLEN and hold.

ATIS 119.575	SAINT LOUIS APP CON 128.725 256.9	BLOOMINGTON TOWER ★ 124.6 (CTAF) 269.575	GND CON 121.65	UNICOM 122.95
------------------------	---	--	--------------------------	-------------------------



1500

3000

MCLEN

UDIYO

RUNAE

4 NM Holding Pattern

2500

201°

021°

6000

2500

GP 3.00°

TCH 58

1.1 NM to RW20

RW20

1.1

3.8 NM

6 NM

CATEGORY	A	B	C	D
LPV DA		1071/18	200 (200-½)	
LNAV/VNAV DA		1301/40	430 (500-¾)	
LNAV MDA	1280/24	409 (500-½)	1280/40	409 (500-¾)
CIRCLING	1340-1	469 (500-1)	1620-2¼ 749 (800-2¼)	1620-2½ 749 (800-2½)

ELEV 871

TDZE 871

201°

20°

6525 X 150

8000 X 150

TWR