

BLOOMINGTON/NORMAL, ILLINOIS

AL-5058 (FAA)

24361

WAAS CH 97617 W11A	APP CRS 111°	Rwy Idg 6525 TDZE 871 Apt Elev 871
--	------------------------	---

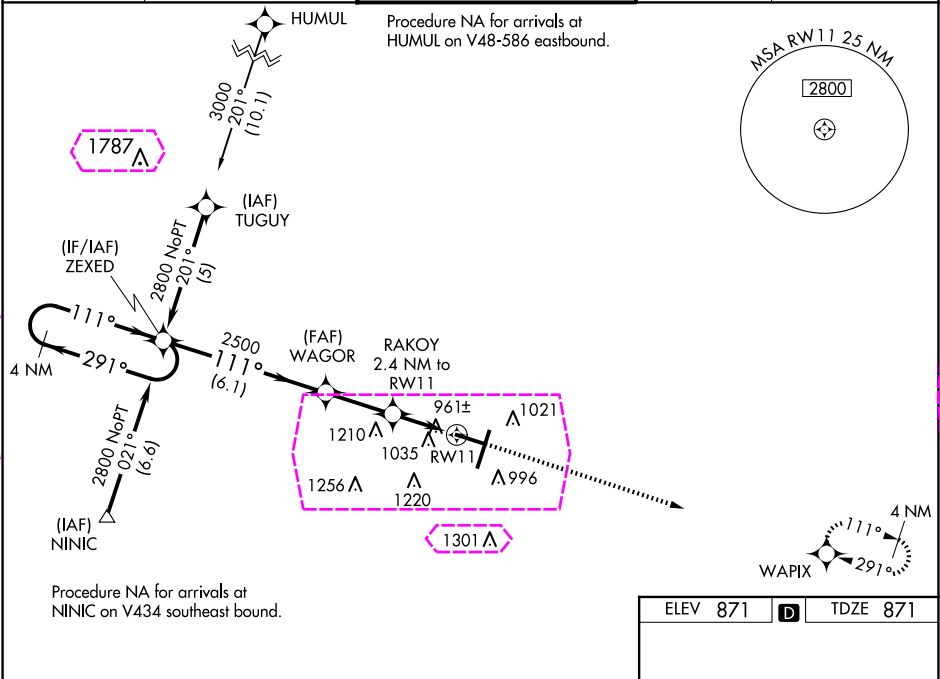
RNAV (GPS) RWY 11

CENTRAL IL RGNL/BLOOMINGTON-NORMAL (BMI)

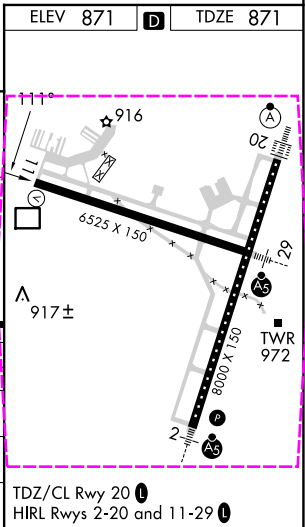
⚠ For uncompensated Baro-VNAV systems, LNAV/VNAV NA below -1.6°C (4°F) or above 54°C (130°F). DME/DME RNP-0.3 NA. Baro-VNAV and VDP NA when using General Downing-Peoria Intl altimeter setting. When local altimeter setting not received, use General Downing-Peoria Intl setting: increase all DA 116 feet and all MDA 120 feet; increase LPV all Cts visibility ½ mile, LNAV/VNAV all Cts and LNAV Cat C/D visibility ¾ mile, and Circling Cts C/D visibility ¼ mile.

MISSED APPROACH:
Climb to 3100 direct
WAPIX and hold.

ATIS 119.575	SAINT LOUIS APP CON 128.725 256.9	BLOOMINGTON TOWER ★ 124.6 (CTAF) 0 269.575	GND CON 121.65	UNICOM 122.95
------------------------	---	--	--------------------------	-------------------------



4 NM Holding Pattern ZEXED		3100 WAPIX	
2800 ← 291° 111° →		*LNAV only	
GP 3.00° TCH 43		*1.2 NM to RW11	
2500		*1680	
6.1 NM		2.5 NM	
CATEGORY	A	B	C
LPV DA	1121-3/4 250 (300-3/4)		
LNAV/VNAV DA	1341-15/8 470 (500-15/8)		
LNAV MDA	1280-1	409 (500-1)	1280-1 1/4 409 (500-1 1/4)
C CIRCLING	1340-1	469 (500-1)	1620-2 1/4 749 (800-2 1/4) 1620-2 1/2 749 (800-2 1/2)



BLOOMINGTON/NORMAL, ILLINOIS

AL-5058 (FAA)

25219

WAAS CH 97617 W11A	APP CRS 111°	Rwy Ldg 6525 TDZE 871 App Elev 871
--	------------------------	---

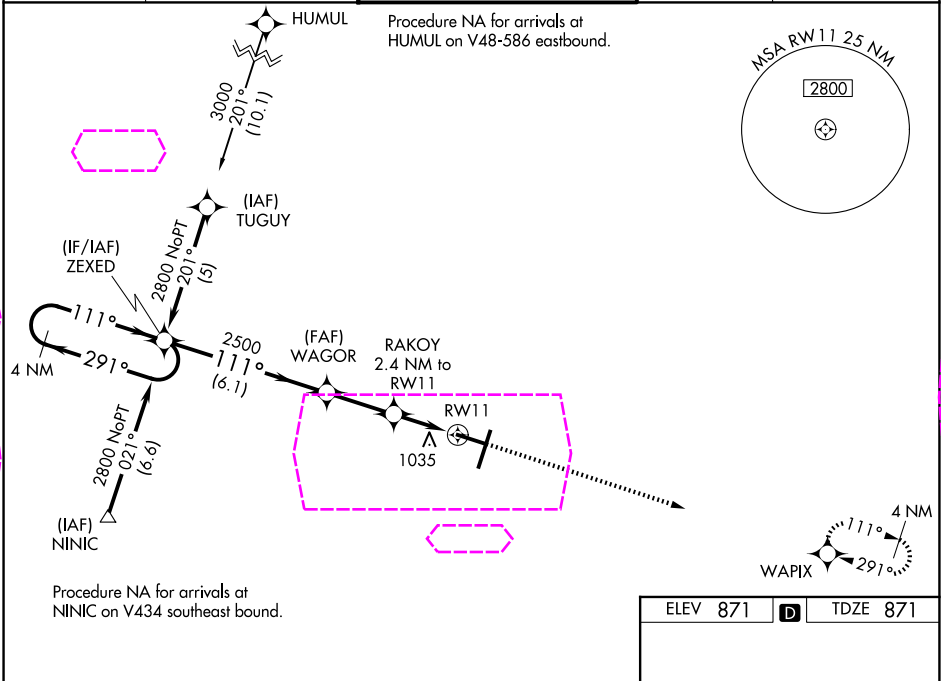
RNAV (GPS) RWY 11

CENTRAL IL RGNL/BLOOMINGTON-NORMAL (BMI)

⚠ For uncompensated Baro-VNAV systems, LNAV/VNAV NA below -1.6°C (4°F) or above 54°C (130°F). DME/DME RNP-0.3 NA. Baro-VNAV and VDP NA when using General Downing-Peoria Intl altimeter setting. When local altimeter setting not received, use General Downing-Peoria Intl setting: increase all DA 116 feet and all MDA 120 feet; increase LPV all Cnts visibility ½ mile, LNAV/VNAV all Cnts and LNAV Cat C/D visibility ¾ mile, and Circling Cnts C/D visibility ½ mile.

MISSED APPROACH:
Climb to 3100 direct
WAPIX and hold.

ATIS 119.575	SAINT LOUIS APP CON 128.725 256.9	BLOOMINGTON TOWER ★ 124.6 (CTAF) 0 269.575	GND CON 121.65	UNICOM 122.95
------------------------	---	--	--------------------------	-------------------------



4 NM Holding Pattern ZEXED

GP 3.00° TCH 43

WAGOR 2500

RAKOY 2.4 NM to RW11

*1.2 NM to RW11

*1680

6.1 NM 2.5 NM 1.2 1.2

CATEGORY	A	B	C	D
LPV DA	1121-3/4 250 (300-3/4)			
LNAV/VNAV DA	1341-15/8 470 (500-15/8)			
LNAV MDA	1280-1	409 (500-1)	1280-1 1/4	409 (500-1 1/4)
CIRCLING	1340-1	469 (500-1)	1620-2 1/4 749 (800-2 1/4)	1620-2 1/2 749 (800-2 1/2)

ELEV 871 TDZE 871

3100 WAPIX

*LNAV only

6525 X 150

3000 X 150

TWR

2