

BLOOMINGTON/NORMAL, ILLINOIS

AL-5058 (FAA)

24361

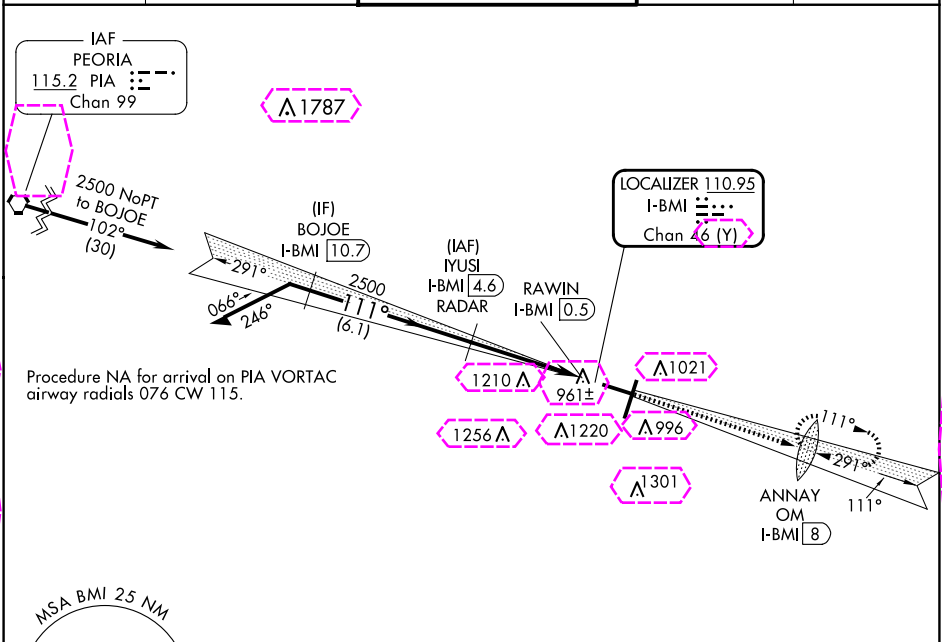
LOC/DME I-BMI 110.95 Chan 46 (Y)	APP CRS 111°	Rwy Idg 6525 TDZE 871 Apt Elev 871
--	------------------------	---

LOC BC RWY 11

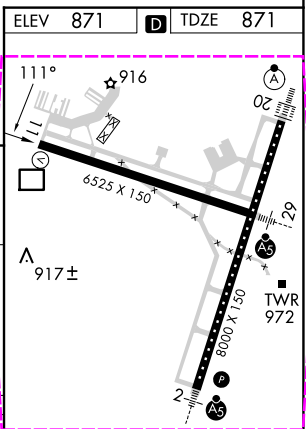
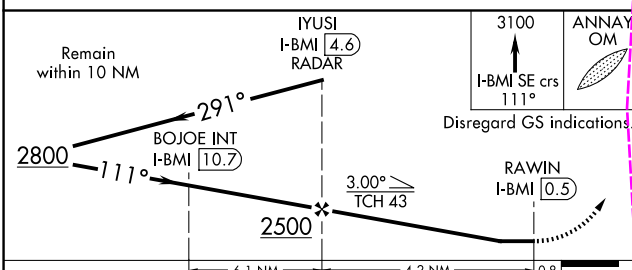
CENTRAL IL RGNL/BLOOMINGTON-NORMAL (BMI)

DME required. RADAR required for procedure entry at IYUSI.	MISSED APPROACH: Climb to 3100 on I-BMI localizer SE course 111° to ANNAY OM/I-BMI 8 DME and hold, continue climb-in-hold to 3100.
When local altimeter setting not received, use PIA altimeter setting: increase all MDAs 120 feet and S-LOC BC 11 visibility Cats C and D ¾ SM, and Circling visibility Cats C and D ¼ SM.	

ATIS 119.575	SAINT LOUIS APP CON 128.725 256.9	BLOOMINGTON TOWER ★ 124.6 (CTAF) 0 269.575	GND CON 121.65	UNICOM 122.95
------------------------	---	---	--------------------------	-------------------------



BACK COURSE



CATEGORY	A	B	C	D
S-LOC 11	1280-1 409 (500-1)		1280-1½ 409 (500-1½)	
CIRCLING	1340-1 469 (500-1)		1620-2¼ 749 (800-2¼)	1620-2½ 749 (800-2½)

TDZ/CL Rwy 20
HIRL Rwy 2-20 and 11-29

BLOOMINGTON/NORMAL, ILLINOIS
Amdt 13 26DEC24

CENTRAL IL RGNL/BLOOMINGTON-NORMAL (BMI)

40°29'N-88°55'W

LOC BC RWY 11

EC-3, 10 JUL 2025 to 07 AUG 2025

EC-3, 10 JUL 2025 to 07 AUG 2025

BLOOMINGTON/NORMAL, ILLINOIS

AL-5058 (FAA)

25219

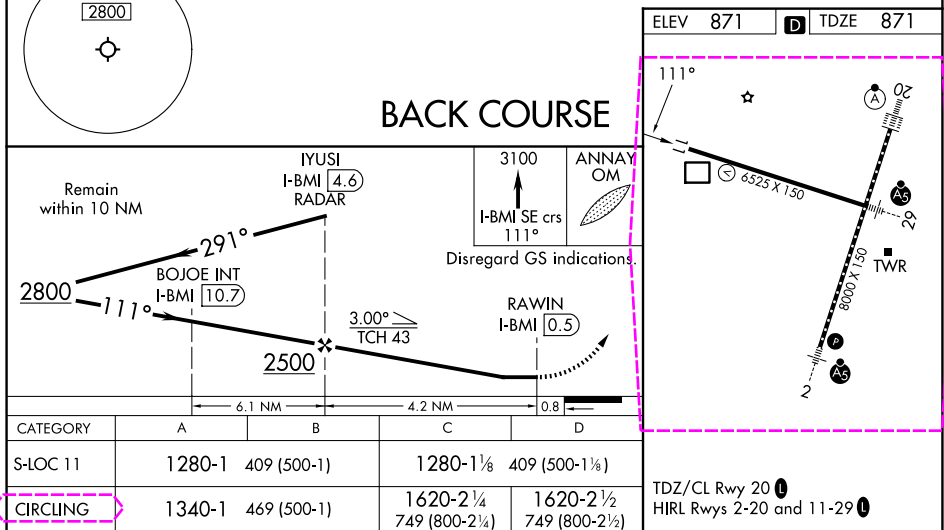
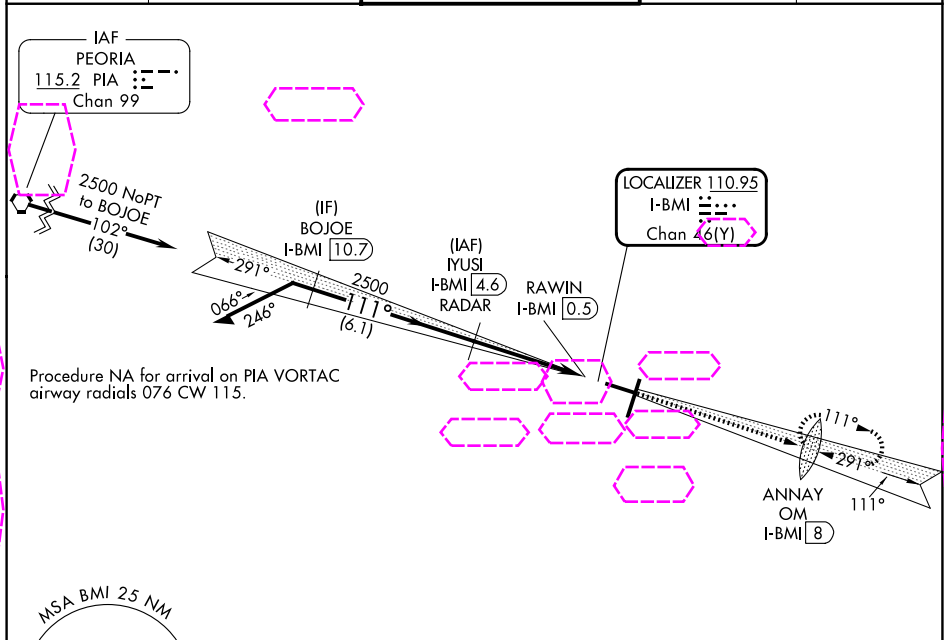
LOC/DME I-BMI 110.95 Chan 46 (Y)	APP CRS 111°	Rwy Ldg TDZE 871 Apt Elev 871
--	------------------------	---

LOC BC RWY 11

CENTRAL IL RGNL/BLOOMINGTON-NORMAL (BMI)

DME required. RADAR required for procedure entry at IYUSI.	MISSED APPROACH: Climb to 3100 on I-BMI localizer SE course 111° to ANNAY OM/I-BMI 8 DME and hold, continue climb-in-hold to 3100.
When local altimeter setting not received, use PIA altimeter setting: increase all MDAs 120 feet and S-LOC BC 11 visibility Cats C and D ¾ SM, and Circling visibility Cats C and D ¼ SM.	

ATIS 119.575	SAINT LOUIS APP CON 128.725 256.9	BLOOMINGTON TOWER ★ 124.6 (CTAF) 0 269.575	GND CON 121.65	UNICOM 122.95
------------------------	---	---	--------------------------	-------------------------



BLOOMINGTON/NORMAL, ILLINOIS
Amdt 13 26DEC24

CENTRAL IL RGNL/BLOOMINGTON-NORMAL (BMI)

40°29'N-88°55'W

LOC BC RWY 11