



BLOOMINGTON/NORMAL, ILLINOIS

AL-5058 (FAA)

25219

LOC/DME I-TXN <b>111.55</b> Chan <b>52 (Y)</b>	APP CRS <b>021°</b>	Rwy Ldg <b>8000</b> TDZE <b>867</b> Apt Elev <b>871</b>
--	------------------------	---

ILS or LOC RWY 2  
CENTRAL IL RGNL/BLOOMINGTON-NORMAL (BMI)

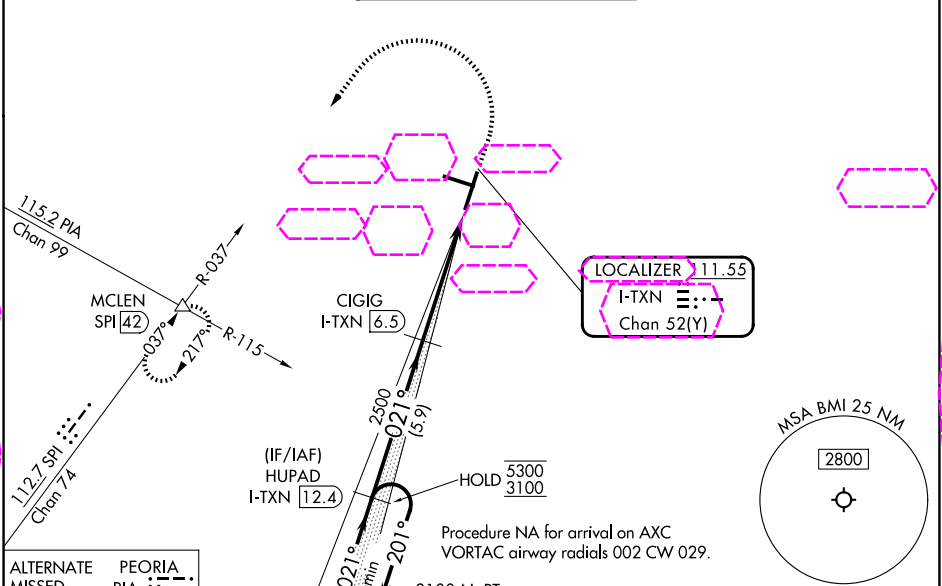
DME required for LOC only.

Autopilot coupled approach NA below 1100. VDP NA when using PIA altimeter setting. Inop table does not apply to S-ILS 2. For inop ALS, increase S-LOC 2 Cats C and D visibility to RVR 6000. When local altimeter setting not received, use PIA altimeter setting: increase S-ILS 2 DA to 1183 feet; increase all MDAs 120 feet and Circling visibility Cats C and D 1/4 SM. For inop ALS when using PIA altimeter setting, increase S-LOC 2 Cats C and D visibility to 1 1/2 SM.

MALSR  
A5

MISSED APPROACH:  
Climb to 1400 then climbing left turn to 3000 on heading 270° and SPI VORTAC R-037 to MCLEN INT/SPI 42 DME and hold.

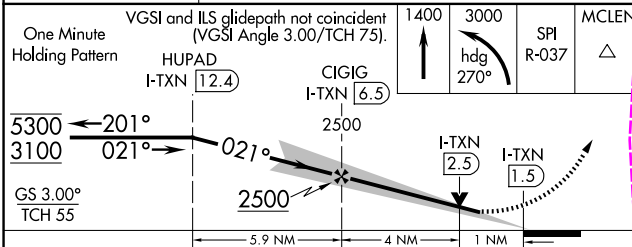
ATIS <b>119.575</b>	SAINT LOUIS APP CON <b>128.725 256.9</b>	BLOOMINGTON TOWER ★ <b>124.6 (CTAF) 0 269.575</b>	GND CON <b>121.65</b>	UNICOM <b>122.95</b>
------------------------	---	--	--------------------------	-------------------------



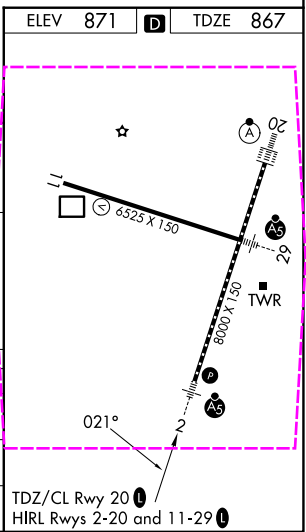
ALTERNATE MISSED APCH FIX

PEORIA PIA 115.2 Chan 99

R-275 095° 275°



CATEGORY	A	B	C	D
S-ILS 2		1067/40	200 (200-3/4)	
S-LOC 2		1260/40	393 (400-3/4)	
CIRCLING	1340-1	469 (500-1)	1620-2 1/4 749 (800-2 1/4)	1620-2 1/2 749 (800-2 1/2)



BLOOMINGTON/NORMAL, ILLINOIS  
Amdt 1 26DEC24

CENTRAL IL RGNL/BLOOMINGTON-NORMAL (BMI)

40°29'N-88°55'W

ILS or LOC RWY 2

EC-3, 07 AUG 2025 to 04 SEP 2025

EC-3, 07 AUG 2025 to 04 SEP 2025