

LOC/DME I-LHJ
111.55
Chan **52(Y)**

APP CRS
201°

Rwy Idg **8000**
TDZE **871**
Apt. Elev **871**

ILS or LOC RWY 20

CENTRAL IL RGNL/BLOOMINGTON-NORMAL (BMI)

ADF or DME or RADAR required for LOC only.
RADAR required for procedure entry at OLIDE.

VDP NA when using PIA altimeter setting. When local altimeter setting not received, use PIA altimeter setting: increase S-ILS 20 DA to 1187 feet and all visibilities to RVR 2400; increase all MDAs 120 feet and S-LOC 20 visibility Cats C and D to RVR 5500 and Circling visibility Cats C and D ¼ SM. For inop ALS when using PIA altimeter setting, increase S-ILS 20 all Cats visibility to RVR 4500 and S-LOC 20 Cats C and D visibility to 1¾ SM.

ALSF-2
RADAR

MISSED APPROACH: Climb to 1500 then climbing right turn to 3000 on heading 279° and SPI VORTAC R-037 to MCLEN INT/PIA 34.2 DME and hold, continue climb-in-hold to 3000.

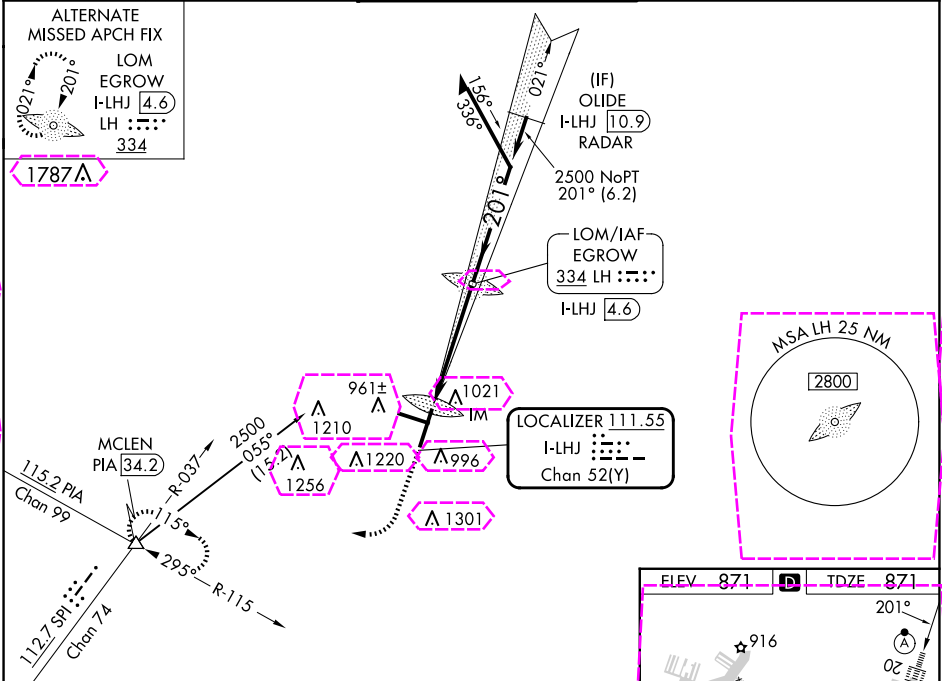
ATIS
119.575

SAINT LOUIS APP CON
128.725 256.9

BLOOMINGTON TOWER ★
124.6 (CTAF) 0 269.575

GND CON
121.65

UNICOM
122.95



ILS or LOC RWY 20