

BLOOMINGTON/NORMAL, ILLINOIS

AL-5058 (FAA)

25051

LOC/DME I-LHJ <b>111.55</b> Chan <b>52</b> (Y)	APP CRS <b>201°</b>	Rwy Idg <b>8000</b> TDZE <b>871</b> App Elev <b>871</b>
--	------------------------	---

ILS RWY 20 (CAT II)

CENTRAL IL RGNL/BLOOMINGTON-NORMAL (BMI)

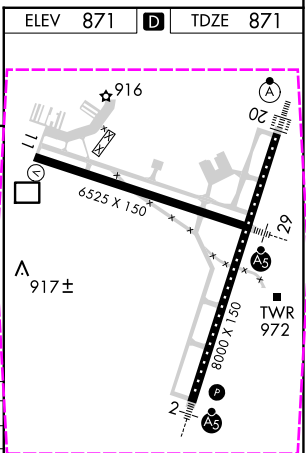
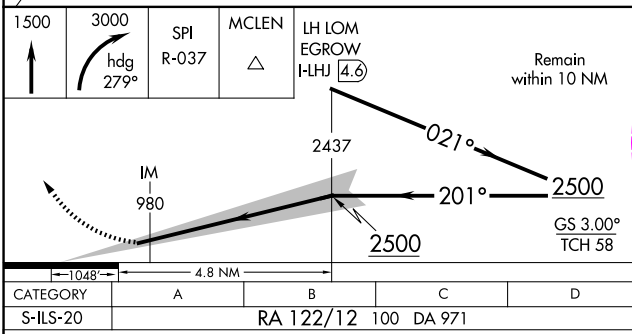
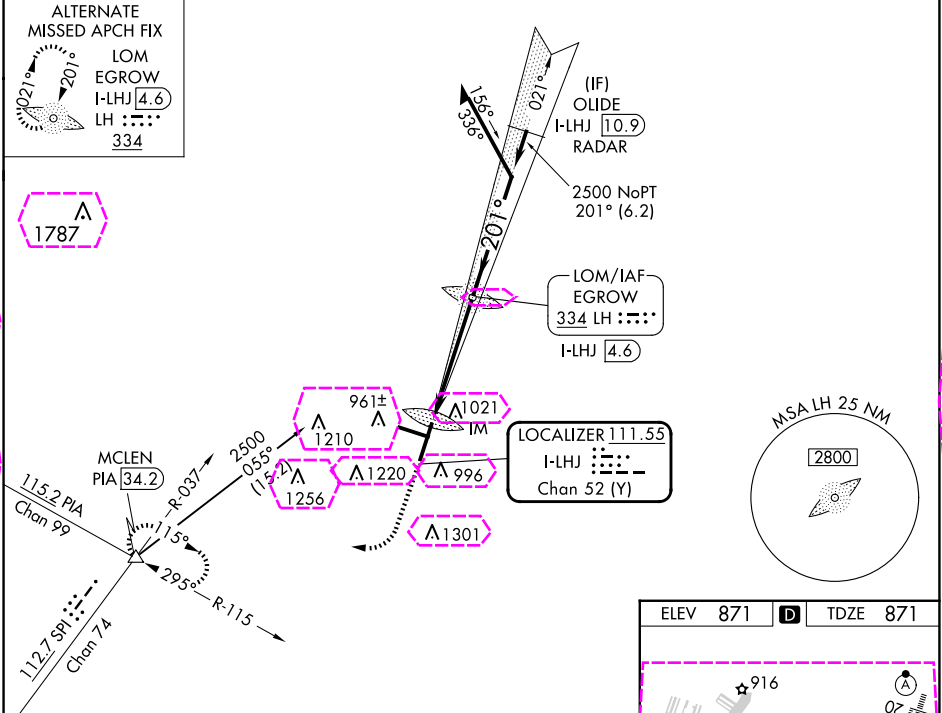
**⚠** **⚠** Procedure NA when tower closed.

ALSIF-2

**A**

MISSED APPROACH: Climb to 1500 then climbing right turn to 3000 on heading 279° and SPI VORTAC R-037 to MCLEN INT/PIA 34.2 DME and hold, continue climb-in-hold to 3000.

ATIS <b>119.575</b>	SAINT LOUIS APP CON <b>128.725 256.9</b>	BLOOMINGTON TOWER ★ <b>124.6</b> (CTAF) <b>0 269.575</b>	GND CON <b>121.65</b>	UNICOM <b>122.95</b>
------------------------	---	---	--------------------------	-------------------------



CATEGORY II ILS - SPECIAL AIRCREW & AIRCRAFT CERTIFICATION REQUIRED

TDZ/CL Rwy 20 **0**  
HIRL Rwy 2-20 and 11-29 **0**

EC-3, 10 JUL 2025 to 07 AUG 2025

EC-3, 10 JUL 2025 to 07 AUG 2025

LOC/DME I-LHJ	APP CRS	Rwy Ldg	8000
111.55	201°	TDZE	871
Chan 52 (Y)		Apt. Elev	871

ILS RWY 20 (CAT II)

CENTRAL IL RGNL/BLOOMINGTON-NORMAL (BMI)

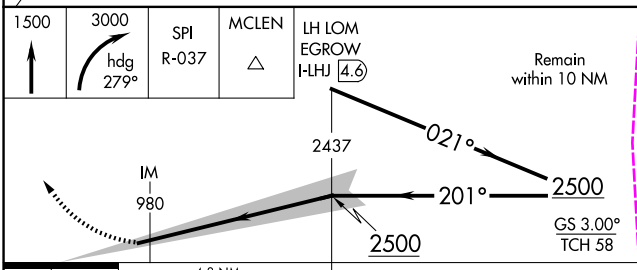
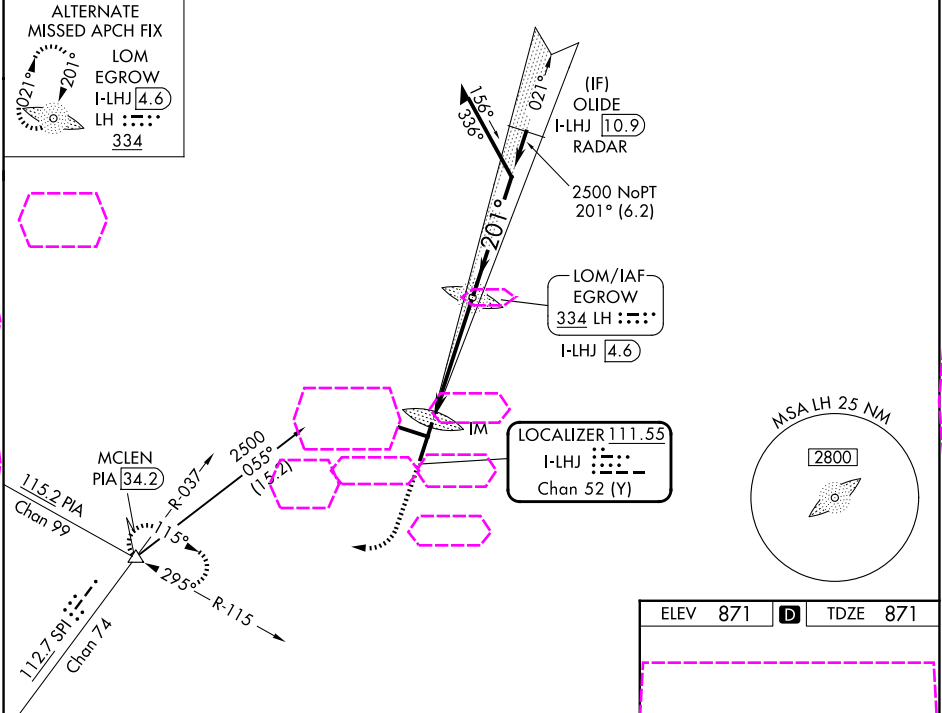
⚠

Procedure NA when tower closed.

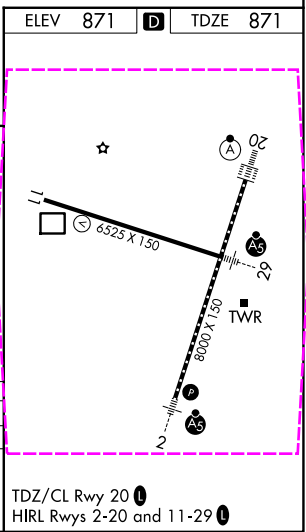
ALSIF-2

MISSED APPROACH: Climb to 1500 then climbing right turn to 3000 on heading 279° and SPI VORTAC R-037 to MCLEN INT/PIA 34.2 DME and hold, continue climb-in-hold to 3000.

ATIS	SAINT LOUIS APP CON	BLOOMINGTON TOWER ★	GND CON	UNICOM
119.575	128.725 256.9	124.6 (CTAF) 269.575	121.65	122.95



CATEGORY	A	B	C	D
S-ILS-20	RA 122/12 100 DA 971			



CATEGORY II ILS - SPECIAL AIRCREW & AIRCRAFT CERTIFICATION REQUIRED