

CORPUS CHRISTI, TEXAS

AL-5032 (FAA)

23306

VORTAC CRP	Rwy Idg	6080
115.5	TDZE	42
Chan 102	Apt Elev	46

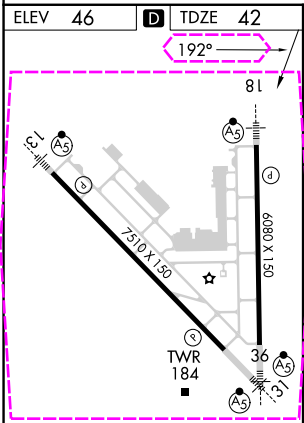
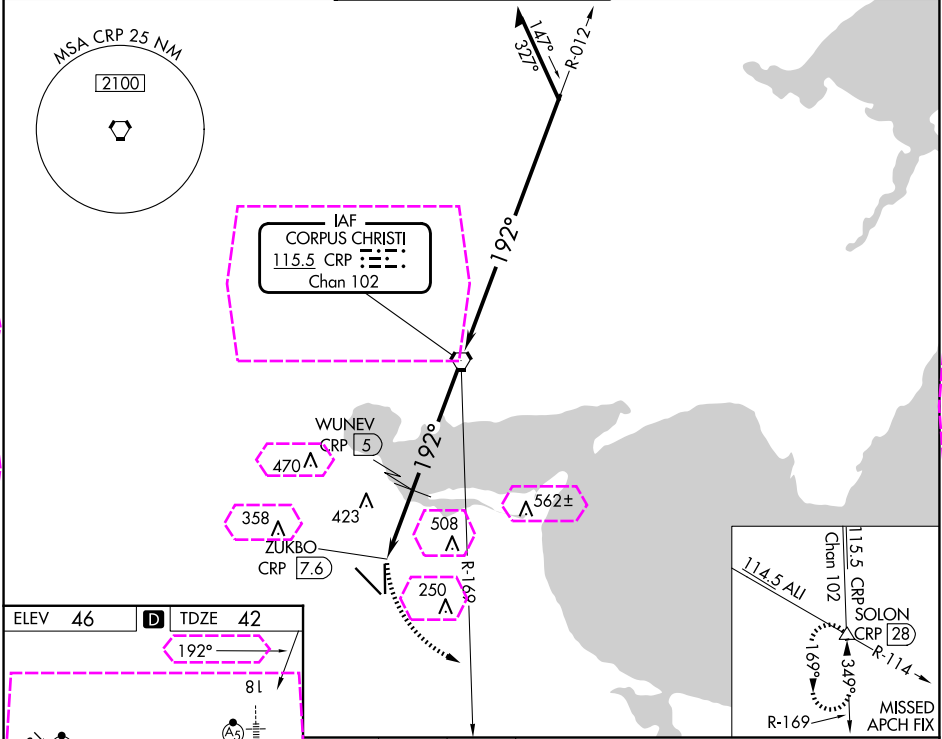
APP CRS
192°

VOR or TACAN RWY 18

CORPUS CHRISTI INTL (CRP)

DME required.	MALSR	MISSED APPROACH: Climbing left turn to 2000 on heading 150° and CRP VORTAC R-169 to SOLON INT/CRP 28 DME and hold.
<p>▼ Rwy 18 helicopter visibility reduction below ¾ SM NA. Inop table does not apply.</p>		

ATIS 126.8	CORPUS APP CON 120.9 348.725	CORPUS TOWER 119.4 257.8	GND CON 121.9 269.15	CLNC DEL 118.55
---------------	---------------------------------	-----------------------------	-------------------------	--------------------



2000		CRP R-169		SOLON △	
hdg 150°					
		ZUKBO CRP 6		WUNEV CRP 5	
		3.00° TCH 50			
		1000		CRP VORTAC	
				012°	
				192°	
				2100	
		1700		Remain within 15 NM	
0.2 1.6 NM		1 NM		5 NM	
CATEGORY	A	B	C	D	E
S-18	680-1	638 (700-1)	680-1¾	638 (700-1¾)	
CIRCLING	680-1 634 (700-1)	780-1 734 (800-1)	820-2¼ 774 (800-2¼)	820-2½ 774 (800-2½)	820-2¾ 774 (800-2¾)

CORPUS CHRISTI, TEXAS
Amdt 29 02NOV23

27°46'N-97°30'W

VOR or TACAN RWY 18

SC-3, 10 JUL 2025 to 07 AUG 2025

SC-3, 10 JUL 2025 to 07 AUG 2025

SC-3, 07 AUG 2025 to 04 SEP 2025.