

CORPUS CHRISTI, TEXAS

AL-5032 (FAA)

23306

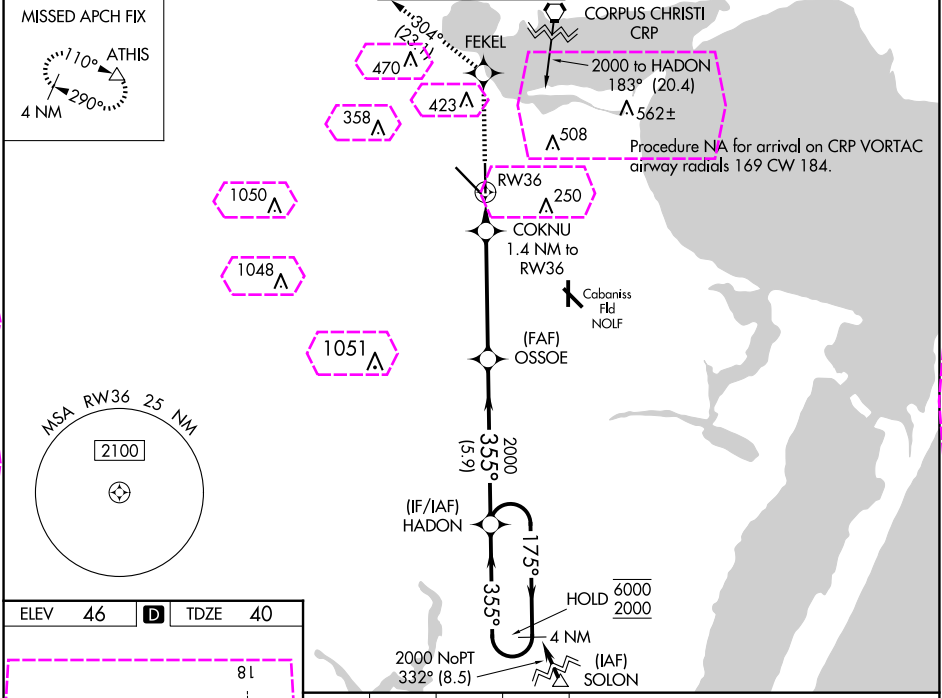
WAAS CH 69617 W36A	APP CRS 355°	Rwy ldg 6080 TDZE 40 Apt Elev 46
--	------------------------	---

RNAV (GPS) Y RWY 36

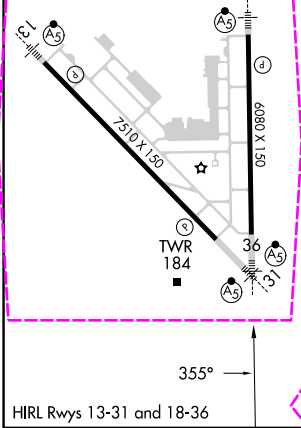
CORPUS CHRISTI INTL (CRP)

RNP APCH - GPS.	For uncompensated Baro-VNAV systems, LNAV/VNAV NA below -1°C or above 54°C. For inop ALS, increase LPV Cat E visibility to RVR 4000, LNAV/VNAV all Cats visibility to RVR 4500 and LNAV Cat E visibility to RVR 6000. * RVR 1800 authorized with use of FD or AP or HUD to DA.	MALSR 	MISSED APPROACH: Climb to 2000 direct FEKEL and on track 304° to ATHIS and hold.
-----------------	---	-----------	--

ATIS 126.8	CORPUS APP CON 120.9 348.725	CORPUS TOWER 119.4 257.8	GND CON 121.9 269.15	CLNC DEL 118.55
----------------------	--	------------------------------------	--------------------------------	---------------------------



ELEV 46	D	TDZE 40
---------	----------	---------



2000	FEKEL	ATHIS	OSOIE	HADON	4 NM Holding Pattern
↑		tr 304°			
	COKNU 1.4 NM to RW36		2000	355°	175° → 6000 ← 355° 2000
	RW36		520		GP 3.00° TCH 53
	1.4 NM	4.6 NM	5.9 NM		
CATEGORY	A	B	C	D	E
LPV DA*	240/24 200 (200-½)				
LNAV/VNAV DA	356/24 316 (400-½)				
LNAV MDA	440/24	400 (400-½)	440/35	400 (400-¾)	
CIRCLING	500-1 454 (500-1)	780-1 734 (600-1)	820-2¼ 774 (800-2¼)	820-2½ 774 (800-2½)	820-2¾ 774 (800-2¾)

CORPUS CHRISTI, TEXAS

AL-5032 (FAA)

25219

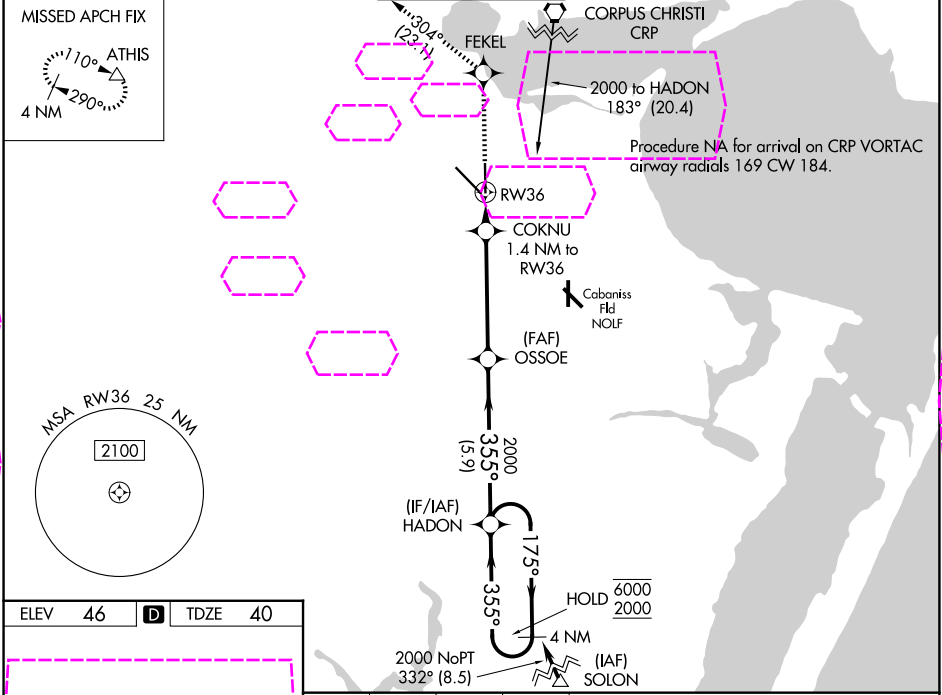
WAAS CH 69617 W36A	APP CRS 355°	Rwy Ldg 6080 TDZE 40 Apt Elev 46
--	------------------------	---

RNAV (GPS) Y RWY 36

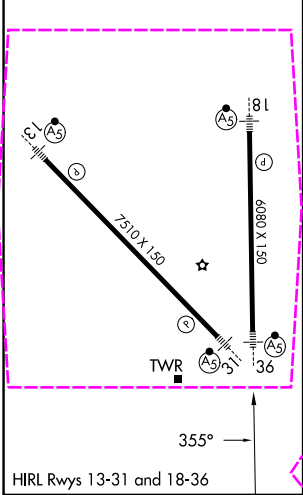
CORPUS CHRISTI INTL (CRP)

RNP APCH - GPS.	For uncompensated Baro-VNAV systems, LNAV/VNAV NA below -1°C or above 54°C. For inop ALS, increase LPV Cat E visibility to RVR 4000, LNAV/VNAV all Cats visibility to RVR 4500 and LNAV Cat E visibility to RVR 6000. * RVR 1800 authorized with use of FD or AP or HUD to DA.	MALSR 	MISSED APPROACH: Climb to 2000 direct FEKEL and on track 304° to ATHIS and hold.
-----------------	---	-----------	--

ATIS 126.8	CORPUS APP CON 120.9 348.725	CORPUS TOWER 119.4 257.8	GND CON 121.9 269.15	CLNC DEL 118.55
----------------------	--	------------------------------------	--------------------------------	---------------------------



ELEV 46	D	TDZE 40
---------	---	---------



CORPUS CHRISTI, TEXAS

Amdt 3A 02NOV23

27°46'N-97°30'W

CORPUS CHRISTI INTL (CRP)

RNAV (GPS) Y RWY 36

SC-3, 07 AUG 2025 to 04 SEP 2025

SC-3, 07 AUG 2025 to 04 SEP 2025