

CORPUS CHRISTI, TEXAS

AL-5032 (FAA)

23306

WAAS CH 60914 W31A	APP CRS 312°	Rwy Idg 7510 TDZE 43 Apt Elev 46
--	------------------------	---

RNAV (GPS) Y RWY 31

CORPUS CHRISTI INTL (CRP)

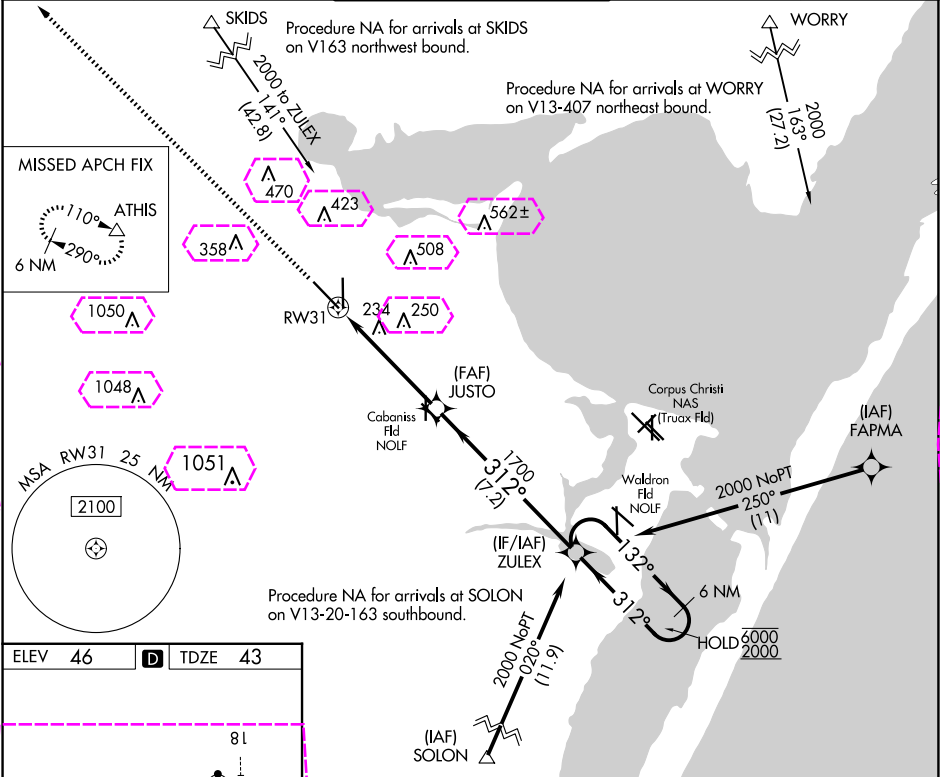
RNP APCH - GPS.

For uncompensated Baro-VNAV systems, LNAV/VNAV NA below -1°C or above 54°C.
Procedure NA when Cabaniss Fld traffic patterns active. For inop ALS, increase LPV Cat E visibility to ¾ SM, LNAV/VNAV all Cats visibility to ¾ SM, and LNAV Cat E visibility to 1¾ SM.

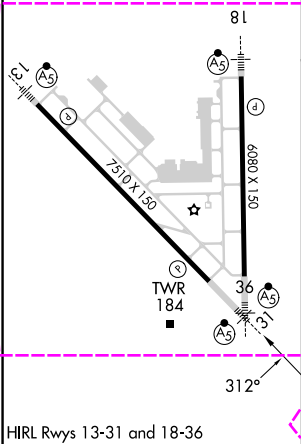


MISSED APPROACH:
Climb to 2000 direct
ATHIS and hold.

ATIS 126.8	CORPUS APP CON 120.9 348.725	CORPUS TOWER 119.4 257.8	GND CON 121.9 269.15	CLNC DEL 118.55
----------------------	--	------------------------------------	--------------------------------	---------------------------



ELEV 46	D	TDZE 43
---------	---	---------



2000 ↑		ATHIS △		JUSTO 1700		ZULEX		6 NM Holding Pattern			
		1.3 NM to RW31		1700		132°→		6000			
		RW31		312°		← 312°		2000			
		1.3 NM		3.8 NM		7.2 NM		GP 3.00° TCH 50			
CATEGORY		A		B		C		D		E	
LPV DA				243-½		200 (200-½)					
LNAV/VNAV DA				356-⅝		313 (400-⅝)					
LNAV MDA		500-½ 457 (500-½)				500-⅞ 457 (500-⅞)					
CIRCLING		500-1 454 (500-1)		780-1 734 (800-1)		820-2¼ 774 (800-2¼)		820-2½ 774 (800-2½)		820-2¾ 774 (800-2¾)	

CORPUS CHRISTI, TEXAS
Amdt 4A 02NOV23

27°46'N-97°30'W

RNAV (GPS) Y RWY 31

CORPUS CHRISTI, TEXAS

AL-5032 (FAA)

25219

WAAS CH 60914 W31A	APP CRS 312°	Rwy Ldg 7510 TDZE 43 Apt Elev 46
--	------------------------	---

RNAV (GPS) Y RWY 31

CORPUS CHRISTI INTL (CRP)

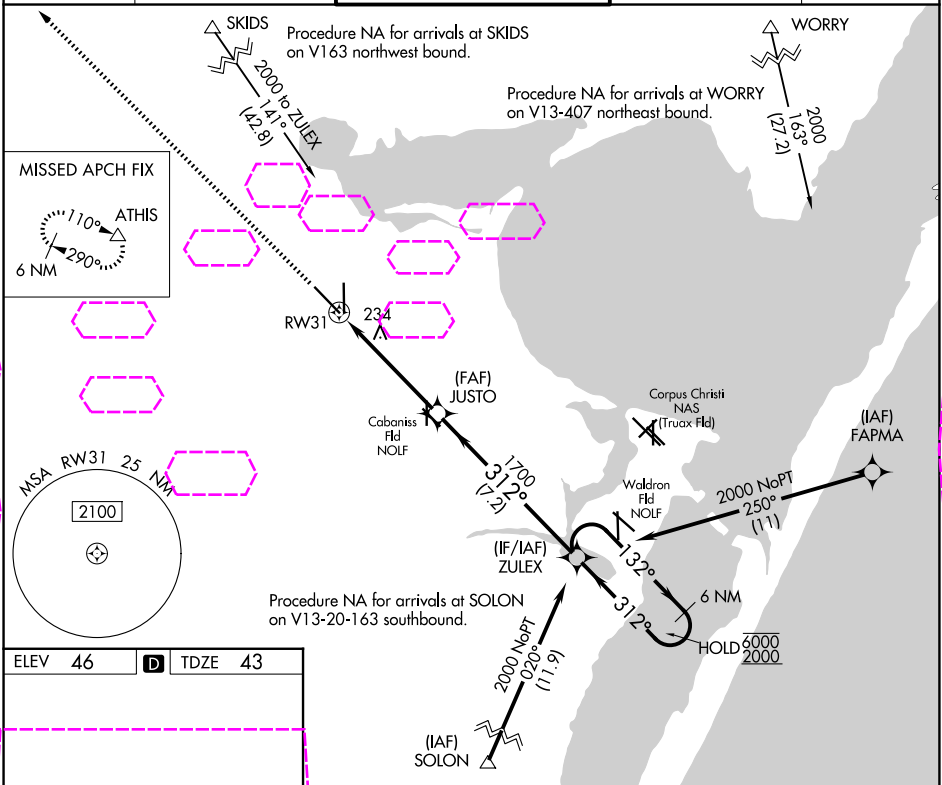
RNP APCH - GPS.

For uncompensated Baro-VNAV systems, LNAV/VNAV NA below -1°C or above 54°C.
Procedure NA when Cabaniss Fld traffic patterns active. For inop ALS, increase LPV Cat E visibility to ¾ SM, LNAV/VNAV all Cats visibility to ¾ SM, and LNAV Cat E visibility to 1¾ SM.

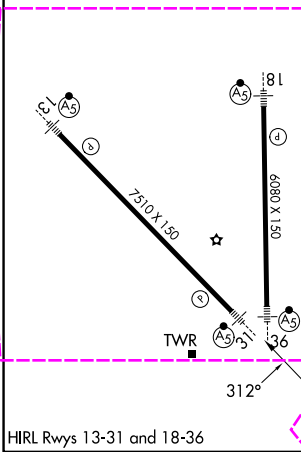


MISSED APPROACH:
Climb to 2000 direct
ATHIS and hold.

ATIS 126.8	CORPUS APP CON 120.9 348.725	CORPUS TOWER 119.4 257.8	GND CON 121.9 269.15	CLNC DEL 118.55
----------------------	--	------------------------------------	--------------------------------	---------------------------



ELEV 46	D	TDZE 43
---------	---	---------



2000 ↑		ATHIS △		JUSTO 1700		ZULEX 1700		6 NM Holding Pattern 132° → 6000 ← 312° 2000	
		1.3 NM to RW31				312°			
		RW31		✕		1700		GP 3.00° TCH 50	
		1.3 NM		3.8 NM		7.2 NM			
CATEGORY	A		B		C		D		E
LPV DA			243-½		200 (200-½)				
LNAV/VNAV DA			356-⅝		313 (400-⅝)				
LNAV MDA	500-½		457 (500-½)		500-⅞		457 (500-⅞)		
CIRCLING	500-1 454 (500-1)		780-1 734 (800-1)		820-2¼ 774 (800-2¼)		820-2½ 774 (800-2½)		820-2¾ 774 (800-2¾)

CORPUS CHRISTI, TEXAS
Amdt 4A 02NOV23

27°46'N-97°30'W

RNAV (GPS) Y RWY 31

SC-3, 07 AUG 2025 to 04 SEP 2025

SC-3, 07 AUG 2025 to 04 SEP 2025