

CORPUS CHRISTI, TEXAS

AL-5032 (FAA)

23306


WAAS CH <b>97515</b> <b>W13A</b>	APP CRS <b>132°</b>	Rwy Idg <b>7510</b> TDZE <b>46</b> Apt Elev <b>46</b>
--	------------------------	---

# RNAV (GPS) Y RWY 13

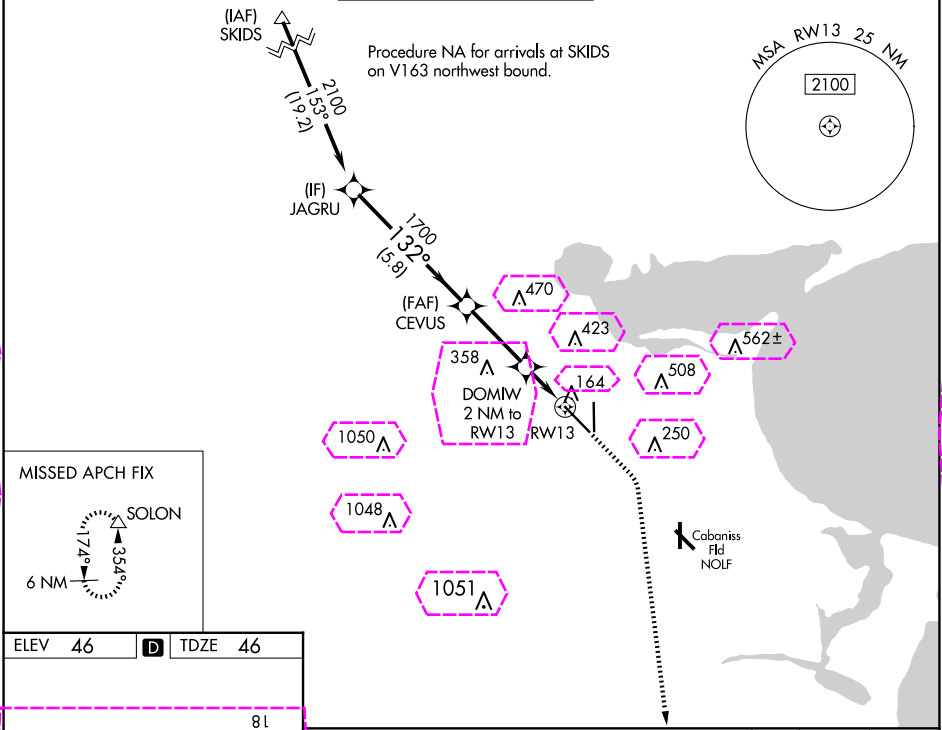
CORPUS CHRISTI INTL (CRP)

RNP APCH - GPS.

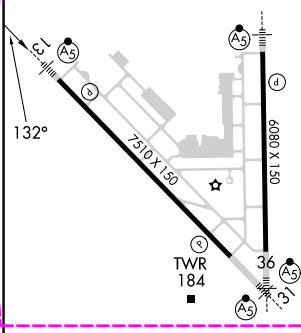
⚠ For uncompensated Baro-VNAV systems, LNAV/VNAV NA below -1°C or above 54°C. For inop ALS increase LPV Cat E visibility to RVR 4000, LNAV/VNAV all Cats visibility to RVR 4500, and LNAV Cats C, D, and E visibility to RVR 5500. \*RVR 1800 authorized with use of FD or AP or HUD to DA.

MALSR  MISSED APPROACH: Climb to 500 then climbing right turn to 2000 direct SOLON and hold.

ATIS <b>126.8</b>	CORPUS APP CON <b>120.9 348.725</b>	CORPUS TOWER <b>119.4 257.8</b>	GND CON <b>121.9 269.15</b>	CLNC DEL <b>118.55</b>
----------------------	--	------------------------------------	--------------------------------	---------------------------



ELEV <b>46</b>	<b>D</b>	TDZE <b>46</b>
----------------	----------	----------------



	JAGRU	CEVUS	DOMIW 2 NM to RW13	1 NM to RW13	RW13
	2100	1700	720		
	132°				
	5.8 NM	3 NM	1 NM	1 NM	
CATEGORY	A	B	C	D	E
LPV DA *	246/24 200 (200-½)				
LNAV/VNAV DA	325/24 279 (300-½)				
LNAV MDA	420/24 374 (400-½)		420/35 374 (400-¾)		
<b>CIRCLING</b>	500-1 454 (500-1)	780-1 734 (800-1)	820-2¼ 774 (800-2¼)	820-2½ 774 (800-2½)	820-2¾ 774 (800-2¾)

CORPUS CHRISTI, TEXAS  
Amdt 2B 02NOV23

27°46'N-97°30'W

# RNAV (GPS) Y RWY 13

SC-3, 10 JUL 2025 to 07 AUG 2025

SC-3, 10 JUL 2025 to 07 AUG 2025

CORPUS CHRISTI, TEXAS

AL-5032 (FAA)

25219

WAAS CH <b>97515</b> <b>W13A</b>	APP CRS <b>132°</b>	Rwy Ldg <b>7510</b> TDZE <b>46</b> Apt Elev <b>46</b>
--	------------------------	---

**RNAV (GPS) Y RWY 13**  
CORPUS CHRISTI INTL (CRP)

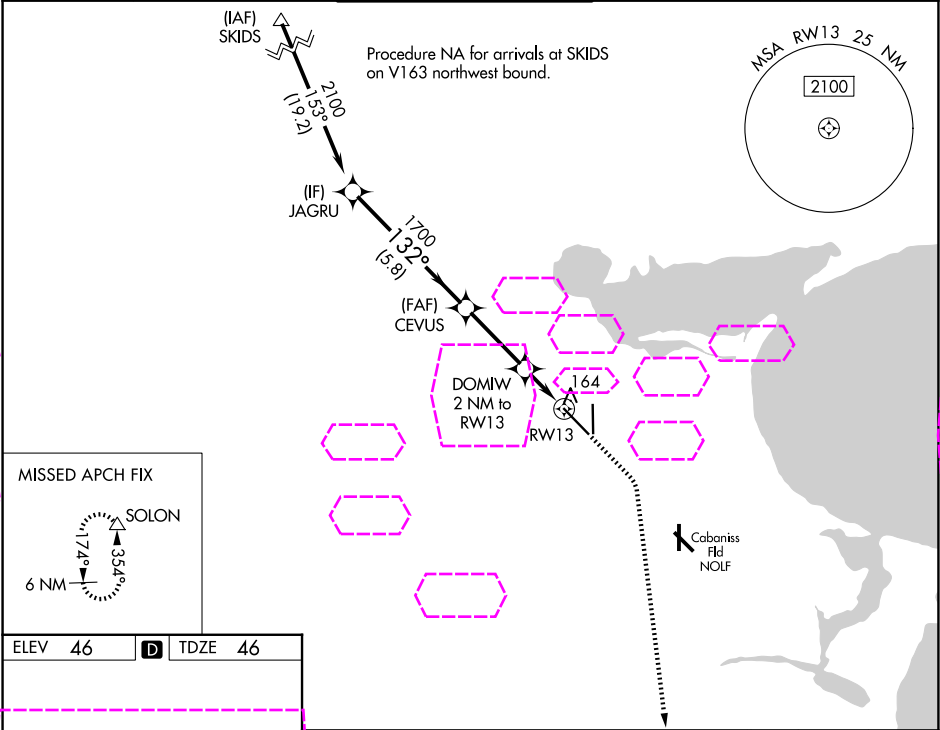
RNP APCH - GPS.

For uncompensated Baro-VNAV systems, LNAV/VNAV NA below -1°C or above 54°C. For inop ALS increase LPV Cat E visibility to RVR 4000, LNAV/VNAV all Cats visibility to RVR 4500, and LNAV Cats C, D, and E visibility to RVR 5500. \*RVR 1800 authorized with use of FD or AP or HUD to DA.

MALSR

MISSED APPROACH: Climb to 500 then climbing right turn to 2000 direct SOLON and hold.

ATIS <b>126.8</b>	CORPUS APP CON <b>120.9 348.725</b>	CORPUS TOWER <b>119.4 257.8</b>	GND CON <b>121.9 269.15</b>	CLNC DEL <b>118.55</b>
----------------------	--	------------------------------------	--------------------------------	---------------------------



MISSED APCH FIX

SOLON

6 NM

ELEV 46

TDZE 46

GP 3.00° TCH 50

7510 X 150

6080 X 150

TWR

HIRL Rwy 13-31 and 18-36

JAGRU	CEVUS	DOMIW 2 NM to RWY 13	1 NM to RWY 13	RWY 13
2100	1700	720		
132°				
5.8 NM	3 NM	1 NM	1 NM	
CATEGORY A	B	C	D	E
LPV DA *	246/24	200 (200-½)		
LNAV/VNAV DA	325/24	279 (300-½)		
LNAV MDA	420/24 374 (400-½)	420/35 374 (400-½)		
CIRCLING	500-1 454 (500-1)	780-1 734 (800-1)	820-2¼ 774 (800-2¼)	820-2½ 774 (800-2½) 820-2¾ 774 (800-2¾)

CORPUS CHRISTI, TEXAS  
Amdt 2B 02NOV23

27°46'N-97°30'W

CORPUS CHRISTI INTL (CRP)  
**RNAV (GPS) Y RWY 13**

SC-3, 07 AUG 2025 to 04 SEP 2025

SC-3, 07 AUG 2025 to 04 SEP 2025