

CORPUS CHRISTI, TEXAS

APP CRS 312°	Rwy Ldg 7510 TDZE 43 Apt Elev 46
------------------------	---

RNAV (GPS) X RWY 31
CORPUS CHRISTI INTL (CRP)

RNP APCH - GPS.	
-----------------	--

T For inop ALS, increase LNAV Cat E visibility to 1³/₈ mile.



MISSED APPROACH: Climb to 2000 direct ATIS and hold.

ATIS 126.8	CORPUS APP CON 120.9 348,725	CORPUS TOWER 119.4 257,8	GND CON 121.9 269,15	CLNC DEL 118.55
---------------	---------------------------------	-----------------------------	-------------------------	--------------------

MISSED APCH FIX

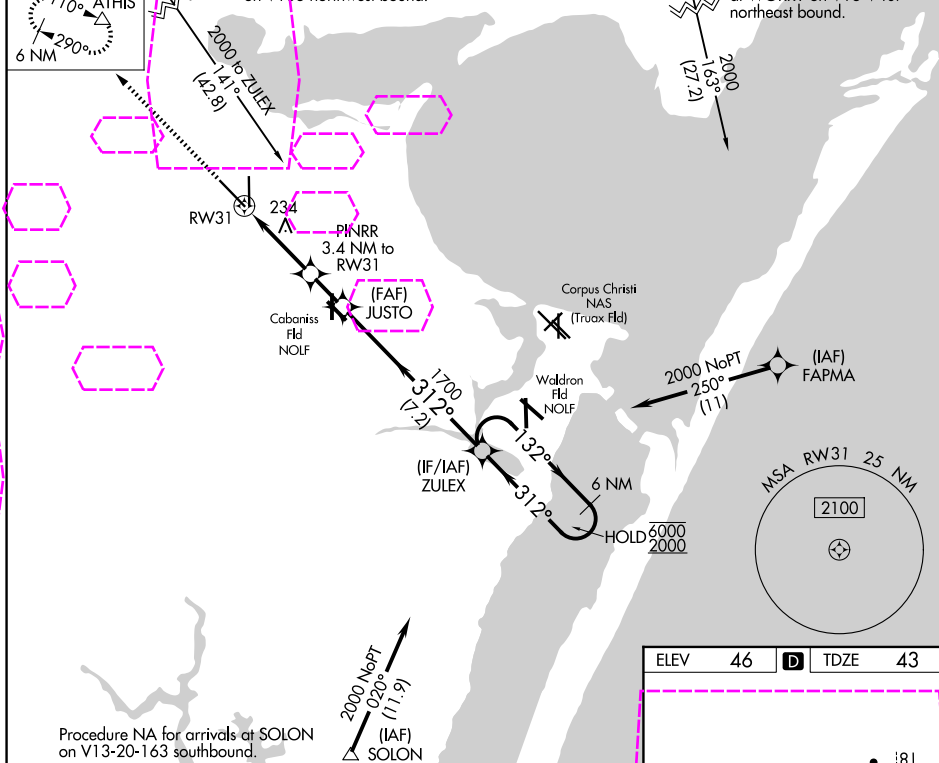
110° ATHIS

6 NM

△ SKIDS Procedure NA for arrivals at SKIDS on VT 63 northwest bound.

WORRY

Procedure NA for arrivals
at WORRY on V13-V407
northeast bound.

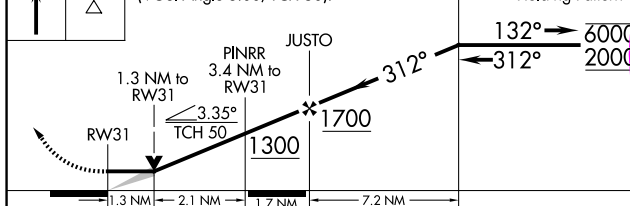


2000
↑

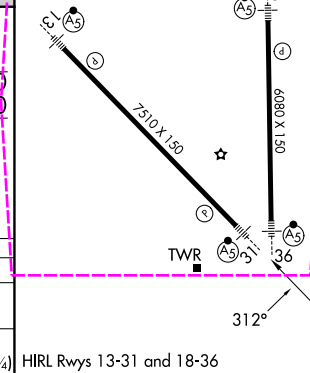
ATHIS
\triangle

VGSI and descent angles not coincident
(VGSI Angle 3.00/TCH 50).

ZULEX

6 NM
Holding Pattern

CATEGORY	A	B	C	D	E
INAV MDA	500-½	457 (500-½)	500-⅞	457 (500-⅞)	
CIRCLING	500-1 454 (500-1)	780-1 734 (800-1)	820-2¼ 774 (800-2¼)	820-2½ 774 (800-2½)	820-2¾ 774 (800-2¾)



CORPUS CHRISTI, TEXAS

Orig-A 02NOV23

CORPUS CHRISTI INTL (CRP)

RNAV (GPS) X RWY 31

27°46'N-97°30'W