

APP CRS 355°	Rwy Idg TDZE Apt Elev	6080 40 44
------------------------	-----------------------------	---------------------------------------

RNAV (RNP) Z RWY 36

CORPUS CHRISTI INTL (CRP)

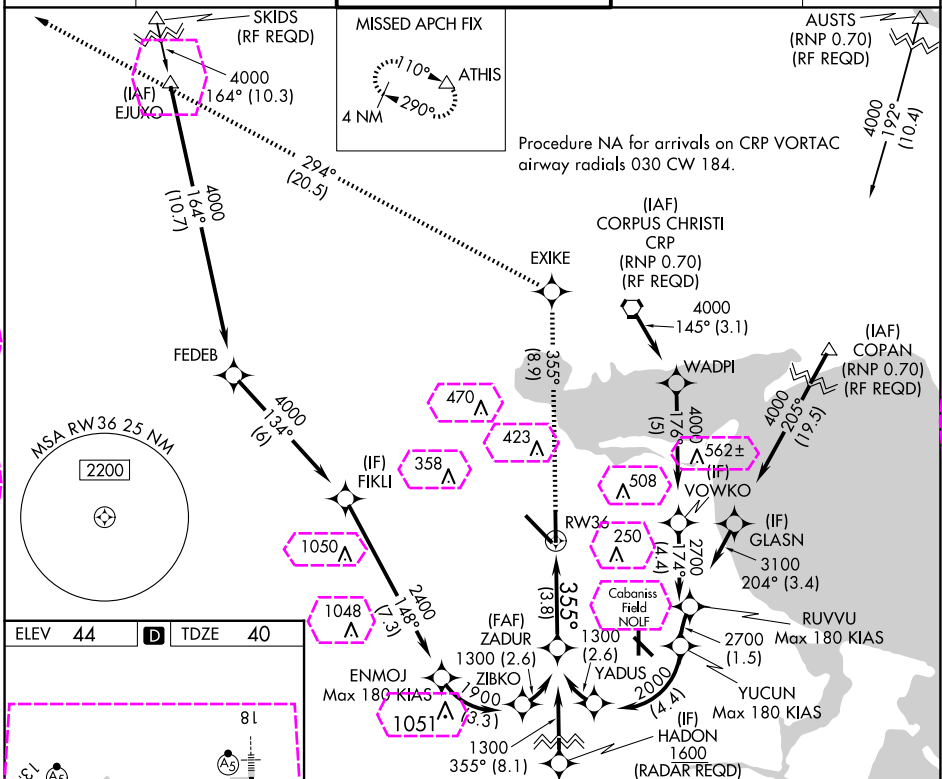
T For uncompensated Baro-VNAV systems, procedure NA below -1°C (-31°F) or above 54°C (130°F). GPS required. For inop MALSR, increase RNP 0.11 visibility all Cats to RVR 4000. For inop MALSR, increase RNP 0.30 visibility all Cats to RVR 5900.

MALSR

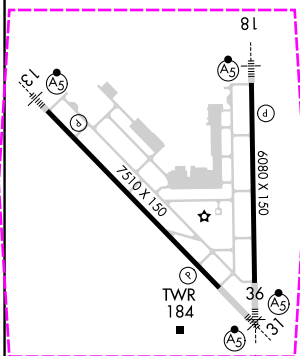







MISSED APPROACH: Climb to 2000 on track 355° to EXIKE and on track 294° to ATHIS and hold.

ATIS 126.8	CORPUS APP CON 120.9 348.725	CORPUS TOWER 119.4 257.8	GND CON 121.9 269.15	CLNC DEL 118.55
----------------------	--	------------------------------------	--------------------------------	---------------------------



ELEV	44	D	TDZE	40
------	----	----------	------	----



<div>2000</div> <div></div> <div>tr 355°</div>		<div>EXIKE</div> <div></div> <div>tr 294°</div>		<div>ATHIS</div> <div></div>		<div>See Planview for multiple IF locations.</div>		<div>ZADUR</div> <div>1300</div>			
<div>RW36</div> <div></div>		<div></div>								<div>GP 3.00°</div> <div>TCH 53</div>	
CATEGORY		A		B		C		D			
RNP 0.11 DA				290/24		250 (300-½)					
RNP 0.30 DA				400/34		360 (400-⅝)					

AUTHORIZATION REQUIRED

CORPUS CHRISTI, TEXAS

Amdt 1B 28NOV24

CORPUS CHRISTI INTL (CRP)

27°46'N-97°30'W

RNAV (RNP) Z RWY 36

SC-3, 10 JUL 2025 to 07 AUG 2025

SC-3, 10 JUL 2025 to 07 AUG 2025

CORPUS CHRISTI, TEXAS

AL-5032 (FAA)

25219

APP CRS	Rwy Ldg	6080
355°	TDZE	40
	Apt Elev	44

RNAV (RNP) Z RWY 36

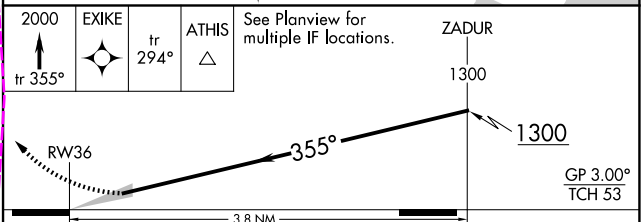
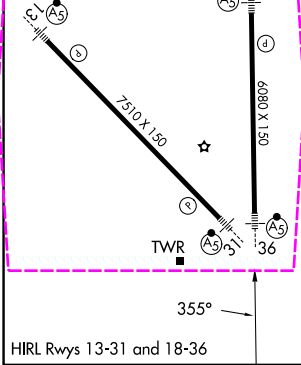
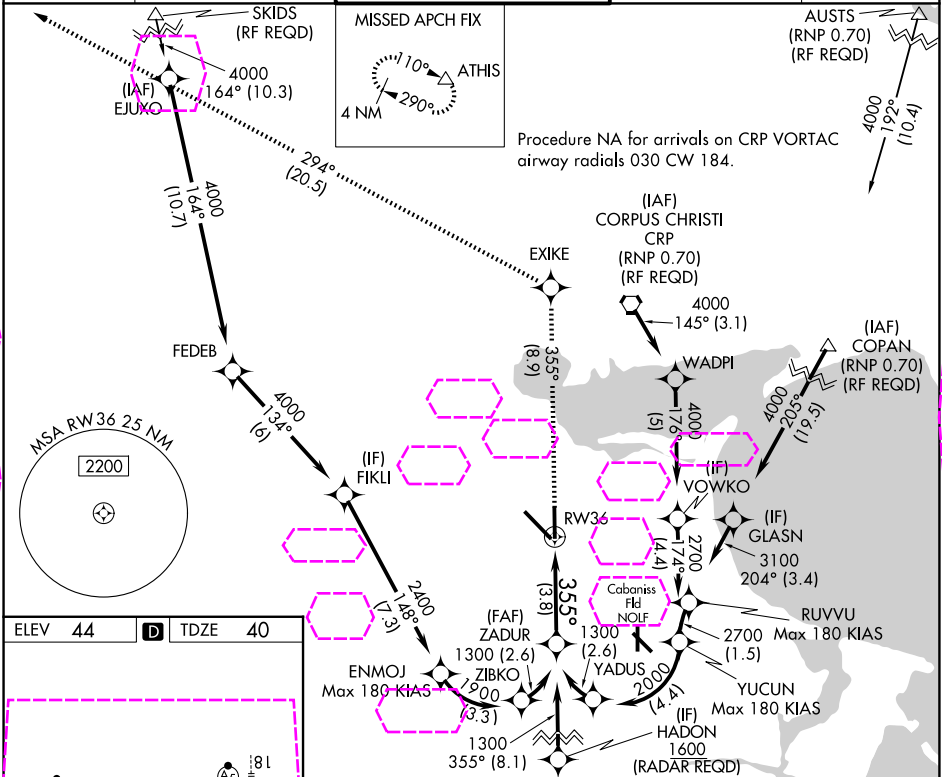
CORPUS CHRISTI INTL (CRP)

For uncompensated Baro-VNAV systems, procedure NA below -1°C (-31°F) or above 54°C (130°F). GPS required. For inop MALSR, increase RNP 0.11 visibility all Cats to RVR 4000. For inop MALSR, increase RNP 0.30 visibility all Cats to RVR 5900.

MALSR

MISSED APPROACH: Climb to 2000 on track 355° to EXIKE and on track 294° to ATHIS and hold.

ATIS	CORPUS APP CON	CORPUS TOWER	GND CON	CLNC DEL
126.8	120.9 348.725	119.4 257.8	121.9 269.15	118.55



CATEGORY	A	B	C	D
RNP 0.11 DA		290/24	250 (300-1/2)	
RNP 0.30 DA		400/34	360 (400-5/8)	

AUTHORIZATION REQUIRED

CORPUS CHRISTI, TEXAS
Amdt 1B 28NOV24

27°46'N-97°30'W

CORPUS CHRISTI INTL (CRP)
RNAV (RNP) Z RWY 36

SC-3, 07 AUG 2025 to 04 SEP 2025

SC-3, 07 AUG 2025 to 04 SEP 2025