

CORPUS CHRISTI, TEXAS

AL-5032 (FAA)

24333

APP CRS	Rwy Idg	7510
312°	TDZE	43
	Apt Elev	46

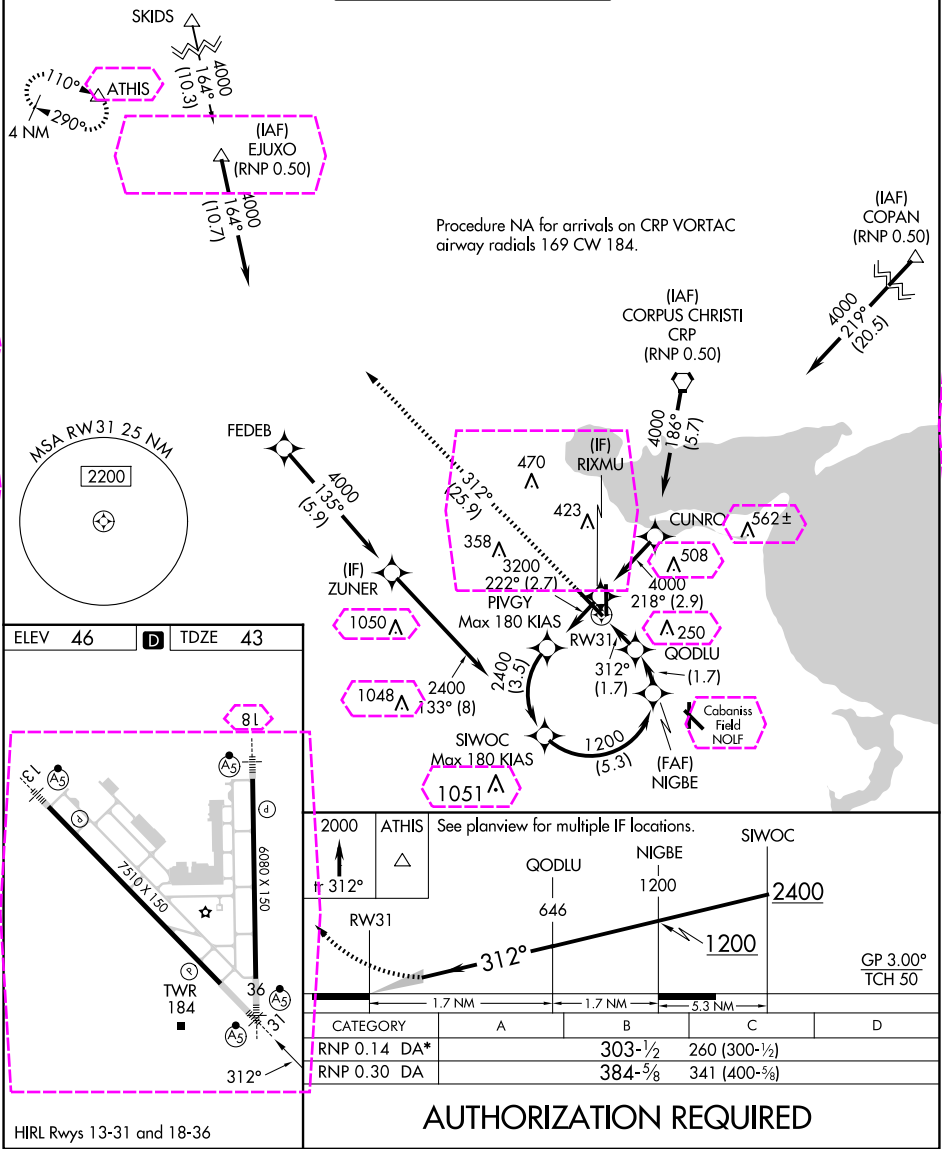
RNAV (RNP) Z RWY 31

CORPUS CHRISTI INTL (CRP)

For uncompensated Baro-VNAV systems, procedure NA below -1°C (31°F) or above 54°C (130°F). GPS and RF required. For inop MALSR, increase RNP 0.14 all Cats visibility to ¾ mile.
*Missed approach requires minimum climb of 335 feet per NM to 500.

MALSR
MISSED APPROACH: Climb to 2000 on track 312° to ATHIS and hold.

ATIS 126.8	CORPUS APP CON 120.9 348.725	CORPUS TOWER 119.4 257.8	GND CON 121.9 269.15	CLNC DEL 118.55
---------------	---------------------------------	-----------------------------	-------------------------	--------------------



SC-3, 10 JUL 2025 to 07 AUG 2025

SC-3, 10 JUL 2025 to 07 AUG 2025

CORPUS CHRISTI, TEXAS

Amdt 1A 28NOV24

27°46'N-97°30'W

CORPUS CHRISTI INTL (CRP) RNAV (RNP) Z RWY 31

CORPUS CHRISTI, TEXAS

AL-5032 (FAA)

25219


APP CRS	Rwy Ldg	7510
312°	TDZE	43
	Apt Elev	46

RNAV (RNP) Z RWY 31

CORPUS CHRISTI INTL (CRP)

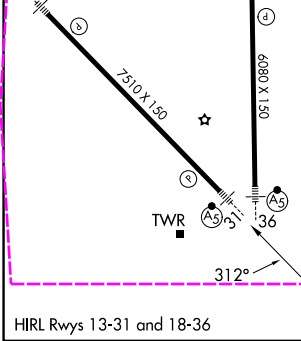
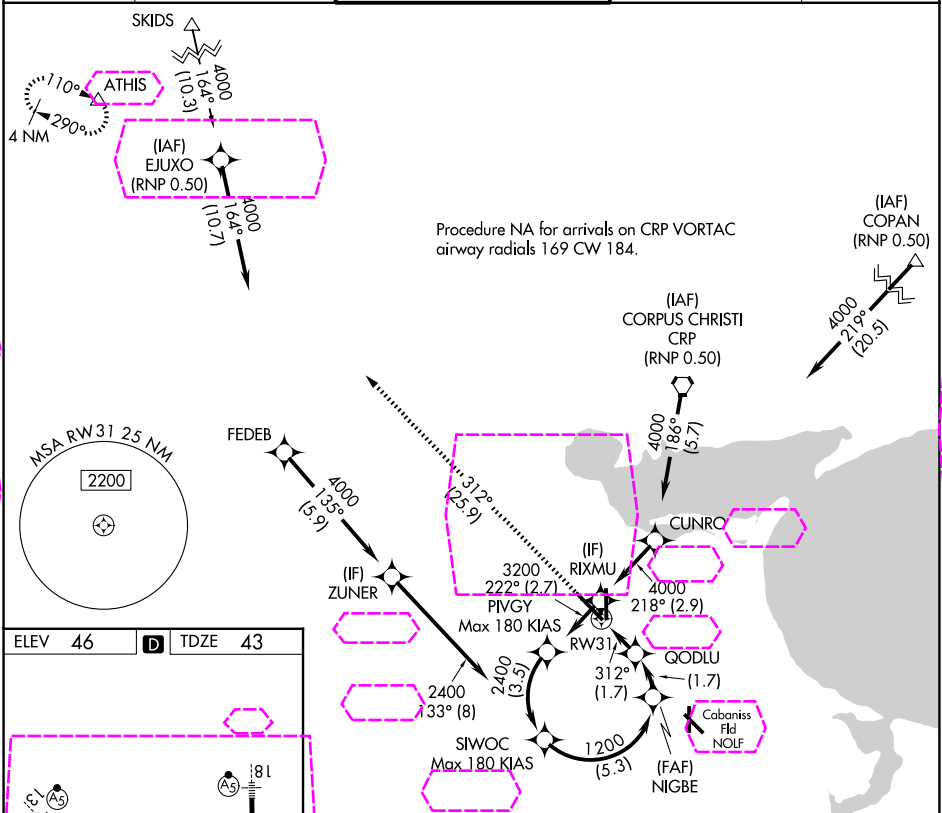
▼ For uncompensated Baro-VNAV systems, procedure NA below -1°C (31°F) or above 54°C (130°F). GPS and RF required. For inop MALSR, increase RNP 0.14 all Cats visibility to ¾ mile.
* Missed approach requires minimum climb of 335 feet per NM to 500.

MALSR



MISSED APPROACH: Climb to 2000 on track 312° to ATHIS and hold.

ATIS 126.8	CORPUS APP CON 120.9 348.725	CORPUS TOWER 119.4 257.8	GND CON 121.9 269.15	CLNC DEL 118.55
---------------	---------------------------------	-----------------------------	-------------------------	--------------------



2000		ATHIS		See planview for multiple IF locations.			SWOC	
↑ fr 312°		△						
RW31		GODLU 646		NIGBE 1200		2400		
1.7 NM		1.7 NM		5.3 NM		GP 3.00° TCH 50		
CATEGORY		A		B		C		
RNP 0.14 DA*				303-1/2		260 (300-1/2)		
RNP 0.30 DA				384-5/8		341 (400-5/8)		

AUTHORIZATION REQUIRED

CORPUS CHRISTI, TEXAS
Amdt 1A 28NOV24

27°46'N-97°30'W

CORPUS CHRISTI INTL (CRP)
RNAV (RNP) Z RWY 31

SC-3, 07 AUG 2025 to 04 SEP 2025

SC-3, 07 AUG 2025 to 04 SEP 2025