

CORPUS CHRISTI, TEXAS

AL-5032 (FAA)

24333


APP CRS 132°	Rwy Idg 7510
	TDZE 46
	Apt Elev 46

RNAV (RNP) Z RWY 13

CORPUS CHRISTI INTL (CRP)

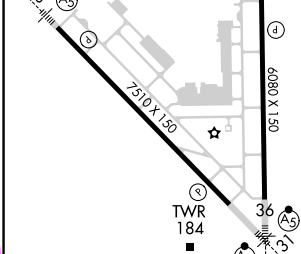
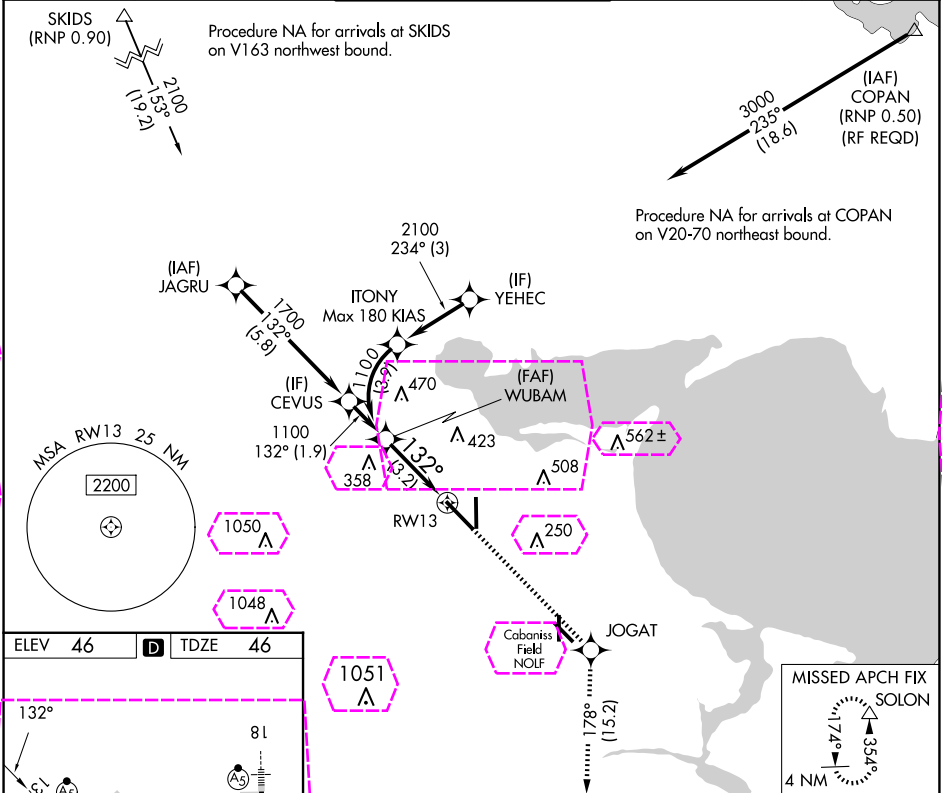
⚠ For uncompensated Baro-VNAV systems, procedure NA below -1°C (31°F) or above 54°C (130°F). GPS required.

MALSR



MISSED APPROACH: Climb to 2000 on track 132° to JOGAT and on track 178° to SOLON and hold.

ATIS 126.8	CORPUS APP CON 120.9 348.725	CORPUS TOWER 119.4 257.8	GND CON 121.9 269.15	CLNC DEL 118.55
---------------	---------------------------------	-----------------------------	-------------------------	--------------------



CORPUS CHRISTI, TEXAS



AL-5032 (FAA)

25219

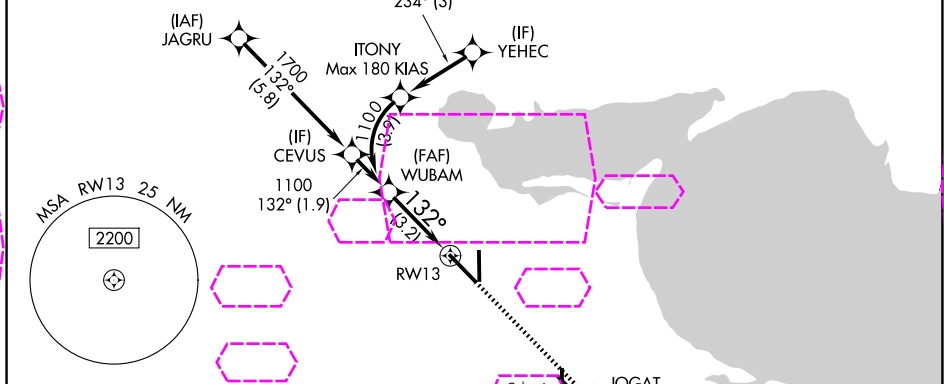
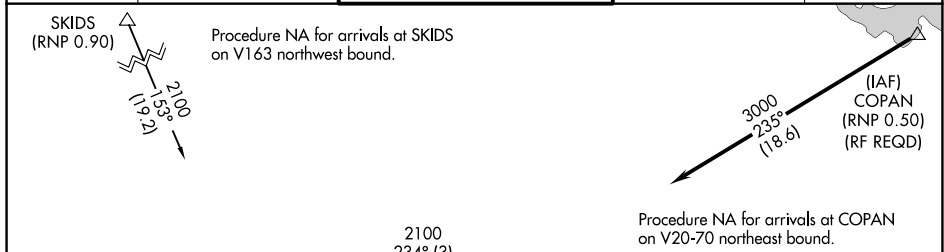
APP CRS 132°	Rwy Ldg 7510
	TDZE 46
	Apt Elev 46

RNAV (RNP) Z RWY 13

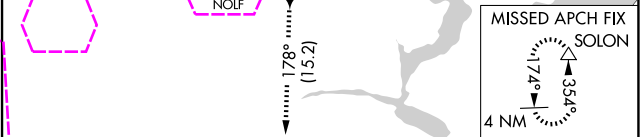
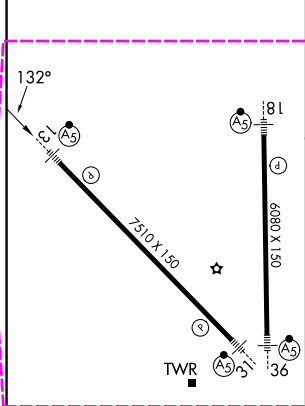
CORPUS CHRISTI INTL (CRP)

 For uncompensated Baro-VNAV systems, procedure NA below -1°C (31°F) or above 54°C (130°F). GPS required.	MALSR 	MISSED APPROACH: Climb to 2000 on track 132° to JOGAT and on track 178° to SOLON and hold.
--	--	--

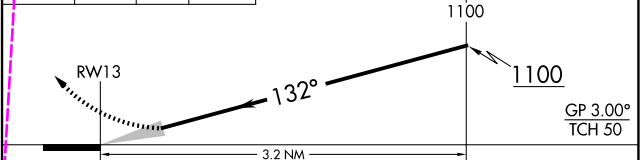
ATIS 126.8	CORPUS APP CON 120.9 348.725	CORPUS TOWER 119.4 257.8	GND CON 121.9 269.15	CLNC DEL 118.55
---------------	---------------------------------	-----------------------------	-------------------------	--------------------



ELEV 46	D	TDZE 46
---------	---	---------



2000	JOGAT	SOLON
tr 132°	tr 178°	△



CATEGORY	A	B	C	D
RNP 0.30 DA	394/30	348 (400-%)		

AUTHORIZATION REQUIRED

CORPUS CHRISTI, TEXAS
Amdt 1A 28NOV24

27°46'N-97°30'W

CORPUS CHRISTI INTL (CRP)
RNAV (RNP) Z RWY 13

SC-3, 07 AUG 2025 to 04 SEP 2025

SC-3, 07 AUG 2025 to 04 SEP 2025