

CORPUS CHRISTI, TEXAS

AL-5032 (FAA)

23306

WAAS CH 53635 W18A	APP CRS 175°	Rwy Idg 6080 TDZE 42 Apt Elev 46
--	------------------------	---

RNAV (GPS) RWY 18

CORPUS CHRISTI INTL (CRP)

RNP APCH - GPS.

▼ For uncompensated Baro-VNAV systems, LNAV/VNAV NA below 1°C or above 54°C. For inop ALS, increase LPV Cat E visibility to ¾ SM, all LNAV/VNAV visibilities to ¾ SM, and LNAV Cat C, D, and E visibility to 1¼ SM.

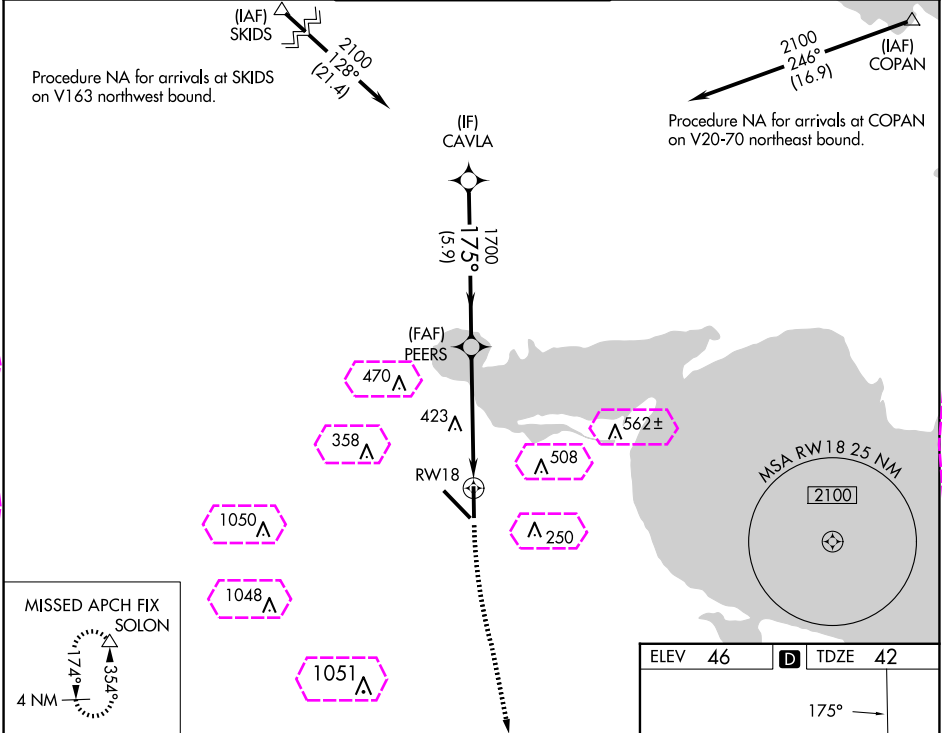
▲

MAISR

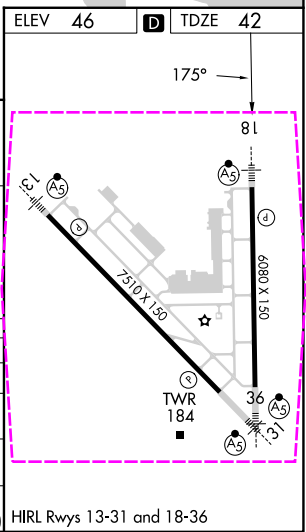
AS

MISSED APPROACH: Climb to 500 then climbing left turn to 2000 direct SOLON and hold.

ATIS 126.8	CORPUS APP CON 120.9 348.725	CORPUS TOWER 119.4 257.8	GND CON 121.9 269.15	CLNC DEL 118.55
----------------------	--	------------------------------------	--------------------------------	---------------------------



CAVLA	2100	175°	PEERS	1700	1.8 NM to RW18	RW18	500	2000	SOLON
GP 3.00° TCH 50	5.9 NM	3.3 NM	1.8 NM						
CATEGORY	A	B	C	D	E				
LPV DA		242-½	200 (200-½)						
LNAV/VNAV DA		345-½	303 (300-½)						
LNAV MDA	660-½	618 (700-½)	660-1⅓	618 (700-1⅓)					
CIRCLING	660-1 614 (700-1)	780-1 734 (800-1)	820-2¼ 774 (800-2¼)	820-2½ 774 (800-2½)	820-2¾ 774 (800-2¾)				



SC-3, 07 AUG 2025 to 04 SEP 2025.