

CORPUS CHRISTI, TEXAS

AL-5032 (FAA)

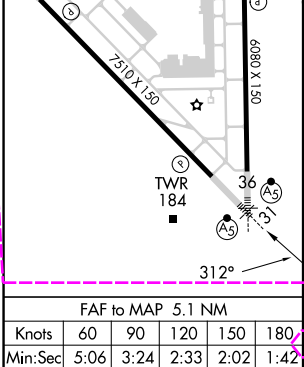
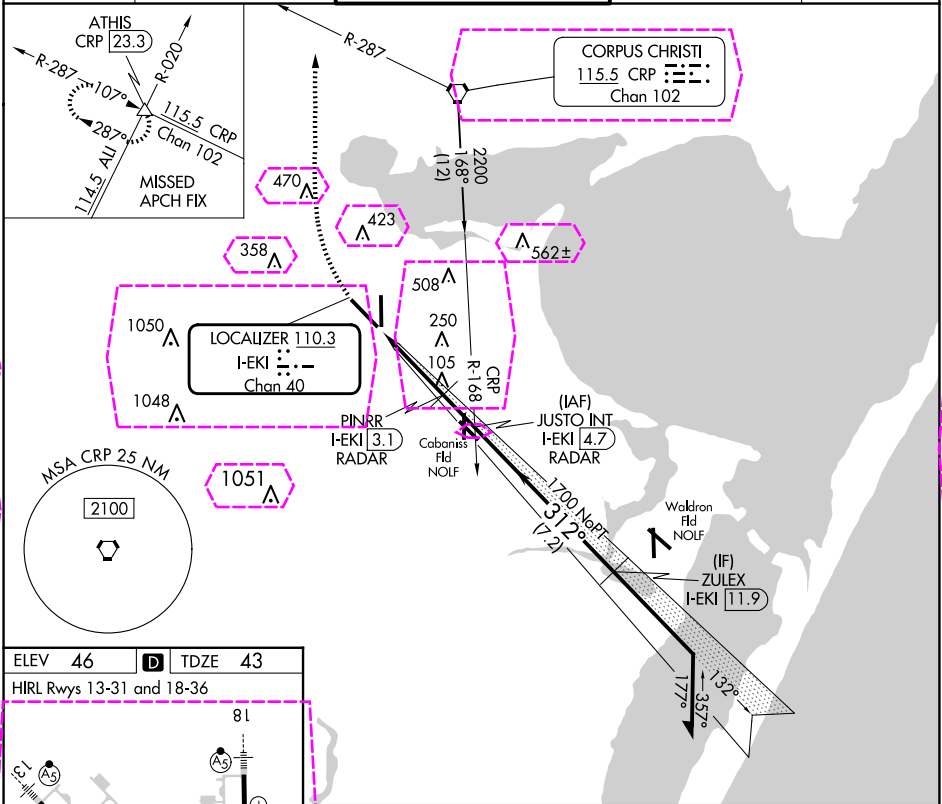
23306

LOC/DME I-EKI 110.3 Chan 40	APP CRS 312°	Rwy ldg 7510 TDZE 43 Apt Elev 46
-------------------------------------------------	------------------------	-------------------------------------------------------------

LOC RWY 31
CORPUS CHRISTI INTL (CRP)

DME or RADAR required. RADAR required for procedure entry at ZULEX.	MALSR 	MISSED APPROACH: Climb to 700 then climbing right turn to 2000 on heading 335° and CRP VORTAC R-287 to ATHIS INT/CRP VORTAC 23.3 DME and hold.
For inop ALS, increase S-LOC 31 Cats C, D, and E visibility to 1 SM.		

ATIS 126.8	CORPUS APP CON 120.9 348.725	CORPUS TOWER 119.4 257.8	GND CON 121.9 269.15	CLNC DEL 118.55
----------------------	----------------------------------------	------------------------------------	--------------------------------	---------------------------



700	2000	ATHIS	JUSTO INT I-EKI 4.7 RADAR		Remain within 15 NM
↑	hdg 335° CRP R-287	△			
I-EKI DME Antenna		PINRR I-EKI 3.1 RADAR			
I-EKI 0.3	I-EKI 0.6	3.35° TCH 50	2200	132°	2000
		1300	1700	312°	
		VGSI and descent angles not coincident (VGSI Angle 3.00/TCH 50).			
1		2.5 NM	1.6 NM		
CATEGORY	A	B	C	D	E
S-31	400-½	357 (400-½)	400-⅝		357 (400-⅝)
CIRCLING	500-1	780-1	820-2¼	820-2½	820-2¾
	454 (500-1)	734 (800-1)	774 (800-2¼)	774 (800-2½)	774 (800-2¾)

SC-3, 07 AUG 2025 to 04 SEP 2025