

CORPUS CHRISTI, TEXAS

AL-5032 (FAA)

23306

LOC/DME I-OYC	APP CRS	Rwy Idg	6080
109.5	355°	TDZE	40
Chan 32		Apt Elev	46

ILS or LOC RWY 36

CORPUS CHRISTI INTL (CRP)

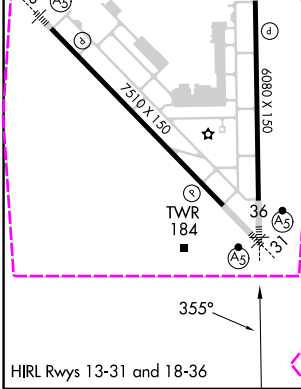
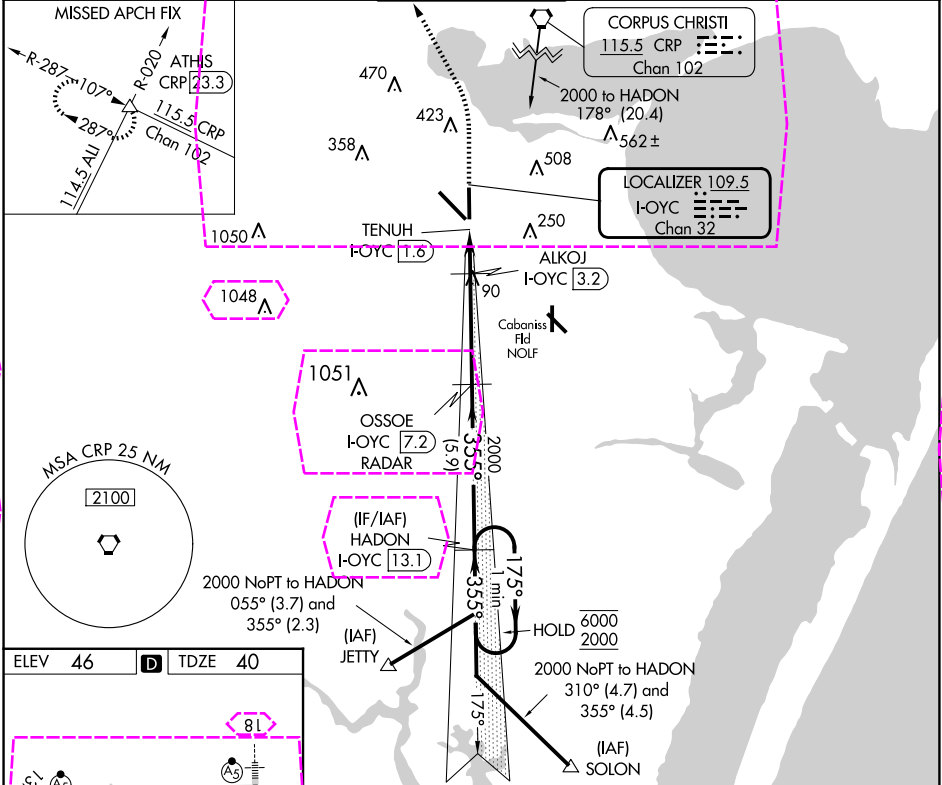
DME required.

For inop ALS, increase S-ILS 36 Cat E visibility to RVR 4000 and S-LOC 36 Cat C/D/E visibility to RVR 4500.

MALSR

MISSED APPROACH: Climb to 700 then climbing left turn to 2000 on heading 338° and CRP VORTAC R-287 to ATHIS INT/CRP 23.3 DME and hold.

ATIS 126.8	CORPUS APP CON 120.9 348.725	CORPUS TOWER 119.4 257.8	GND CON 121.9 269.15	CLNC DEL 118.55
---------------	---------------------------------	-----------------------------	-------------------------	--------------------



700	2000	CRP R-287	ATHIS	ILS unusable inside DA. LOC unusable within 1.6 DME.	
hdg 338°				OSOUE I-OYC 7.2	HADON I-OYC 13.1
				RADAR	One Minute Holding Pattern
				ALKOJ I-OYC 3.2	
				TENUH I-OYC 1.6	
				720	2000
				355°	175° → 6000
					← 355° 2000
					GS 3.00° TCH 53
CATEGORY	A	B	C	D	E
S-ILS 36		240/24	200 (200-1/2)		
S-LOC 36		340/24	300 (300-1/2)		
CIRCLING	500-1 454 (500-1)	780-1 734 (800-1)	820-2 1/4 774 (800-2 1/4)	820-2 1/2 774 (800-2 1/2)	820-2 3/4 774 (800-2 3/4)

CORPUS CHRISTI, TEXAS
Amdt 14B 02NOV23

27°46'N-97°30'W

CORPUS CHRISTI INTL (CRP)

ILS or LOC RWY 36

SC-3, 10 JUL 2025 to 07 AUG 2025

SC-3, 10 JUL 2025 to 07 AUG 2025

LOC/DME I-OYC <u>109.5</u> Chan 32	APP CRS 355°	Rwy Ldg 6080 TDZE 40 Apt Elev 46
---	------------------------	---

ILS or LOC RWY 36
CORPUS CHRISTI INTL (CRP)

DME required.

T For inop ALS, increase S-ILS 36 Cat E visibility to RVR 4000 and S-LOC 36 Cat C/D/E visibility to RVR 4500.

MALS^R

MISSED APPROACH: Climb to 700 then climbing left turn to 2000 on heading 338° and CRP VORTAC R-287 to ATHIS INT/CRP 23.3 DME and hold.

ATIS 126.8	CORPUS APP CON 120.9 348,725	CORPUS TOWER 119.4 257.8	GND CON 121.9 269.15	CLNC DEL 118.55
---------------	---------------------------------	-----------------------------	-------------------------	--------------------

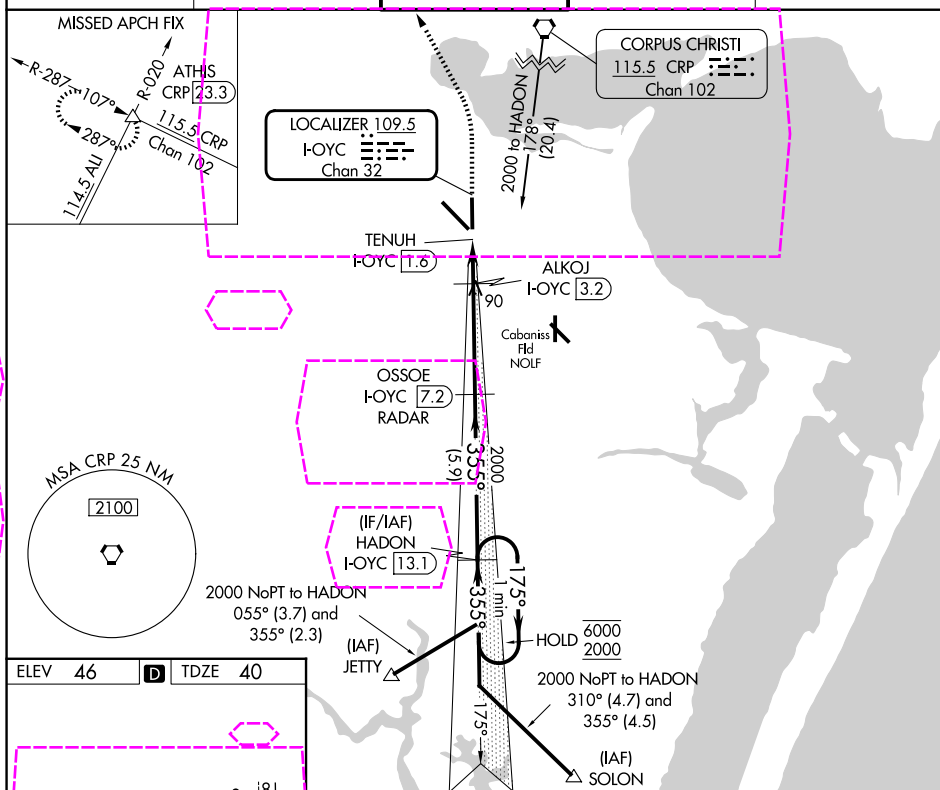


Diagram illustrating the S-ILS 36 approach path and associated data.

Approach Path Details:

- Runway: 7510 x 130
- Taxiway: 6080 x 150
- Heading: 355°
- Distance markers: 0.4, 1.6 NM, 4 NM, 5.9 NM

Approach Table:

CATEGORY	A	B	C	D	E
S-ILS 36		240/24	200 (200-½)		
S-LOC 36		340/24	300 (300-½)		
CIRCLING	500-1 454 (500-1)	780-1 734 (800-1)	820-2½ 774 (800-2½)	820-2½ 774 (800-2½)	820-2¾ 774 (800-2¾)

Other Data:

- OSOE I-OYC 7.2
- HADON I-OYC 13.1
- One Minute Holding Pattern
- GS 3.00°
- TCH 53

CORPUS CHRISTI, TEXAS

Amdt 14B 02NOV23

27°46'N-97°30'W

CORPUS CHRISTI INTL (CRP)
ILS or LOC RWY 36

SC-3, 07 AUG 2025 to 04 SEP 2025